



Meet the Team September 2023



Who's who in Year 6?



Kate (Class Teacher), Louise (CSA), Naomi, Kat





Helen Bruckdorfer
Executive
Headteacher



Lisa Hyland
Head of School



Laura Lien
Director of Inclusion



Naomi Cave
Leader of Learning
and Maths Specialist



Rachel Fields
EYFS Leader



Marianna
Slovackova
SENCo

Here to help - senior leadership



Maria Lewis
School Business
Manager



Kat Branco
Director of Research
School and
Leader of Learning



Pastoral Team



Ashleigh Jones is Child and Family Support Worker across the Federation.

John Clark is Learning Mentor and Pastoral Support at Brecknock.

Bernadette Biggs is Community Liaison Officer at Torriano.

Catriona Hale Pastoral Care Lead at Torriano.

Ryan Carroll is the SEN Assistant at Torriano.

Here to Help - Admin



Lindsey Molyneux
Finance and Communication
Officer

Emily Furness
Administrative Assistant



Jackie Williams
School Admin Officer



Here to help - Inclusion Team



Laura Lien is the Director of Inclusion across the Federation.

Marianna Slovackova is the SENCo at Brecknock.

Natalie Reilly is the Deputy SENCo across the Federation.

Sabrina is the Inclusion Assistant and HLTA at Brecknock.

Hannah Long is the SENCo at Torriano.

Rachel Clancy is the LRB Assistant at Torriano.

Finn Keatinge is the Inclusion Assistant at Torriano.

Ryan Carroll is the SEN Assistant at Torriano.

Safeguarding



Designated Safeguarding Leads



Designated Safeguarding Lead

Laura Lien - Director of Inclusion
Contact: 02074240202



Deputy Safeguarding Lead

Helen Bruckdorfer – Executive Head Teacher
Contact: 02074240202



Deputy Safeguarding Lead

Marianna Slovackova - SENCO
Contact: 02074240202



Deputy Safeguarding Lead

Natalie Reilly – Deputy SENCO
Contact: 02074240202

Nominated governor for safeguarding:

Name: Alex Gardiner and Paul Smith
Contact details: 02074240202

Local Authority Designated Officer (LADO):

Name: Sonia Forbes
Contact details: 020 7974 4556

Camden MASH

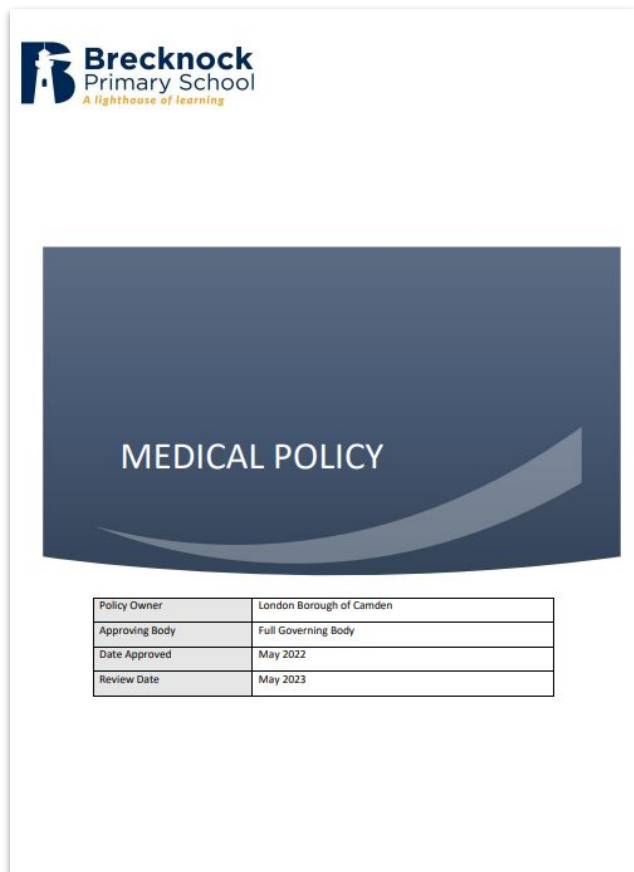
Contact details: 020 7974 3317 (9am to 5pm)
Out of Hours Contact Details: 02079744444

Islington MASH

Contact details: 02075277400 (9am to 5pm)
Out of Hours Contact Details: 02072260992



Medical Needs



Our medical needs policy is available on the school website. If your child requires any medicines in school, you can find further information there.

<https://www.brecknock.camden.sch.uk/wp-content/uploads/2022/07/Medical-Policy-2021-22.pdf>

Enrichment



Carmen Blanco Crespo
Sports Coach



Abdi Ahmed
Sports Coach



Tom Cambata
Music Teacher



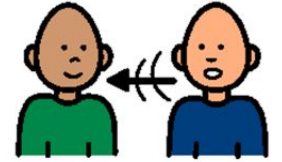
Rod Arran
Specialist Teacher and
Media Teacher



Justin Bioletti
Computing Teacher



Together, our Future Starts Here



We are going to continue with our whole school theme 'Together, Our Future Starts Here' which highlights how we will be working collaboratively across the Brecknock and Torriano partnership.

Our ambition is to increase our capacity to achieve SDG 17, Partnership for the Goals.

We will further develop our oracy and STEAM curriculum in our ambition to offer a horizon broadening, inclusive and creative curriculum.



CAMDEN

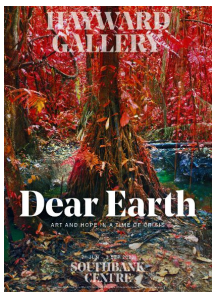
STEAM

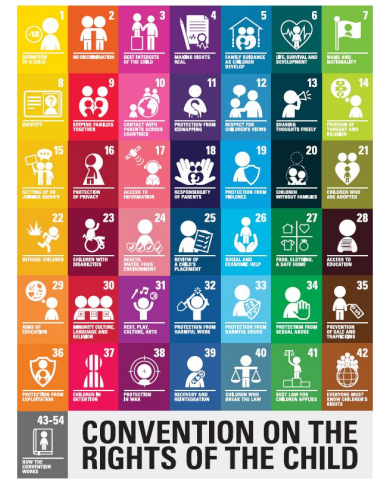


SCIENCE, TECHNOLOGY, ENGINEERING, ARTS AND MATHEMATICS

Dear ...

DARWIN 200 





KS2

Brecknock Primary is proud to be a Gold Rights Respecting school.

B R I G H T Who do I want to be?

unicef RIGHTS RESPECTING SCHOOLS

Brecknock Primary School
A lighthouse of learning

<p>Belief</p>	<p>Resilient</p>	<p>Innovative</p>	<p>Giving</p>	<p>Healthy</p>	<p>Tolerant</p>
---------------	------------------	-------------------	---------------	----------------	-----------------

Charter and Behaviour

1 2 3 Magic

Parent workshops to be announced.

What 'zone' am I in right now?



Link to the behaviour policy (on website):

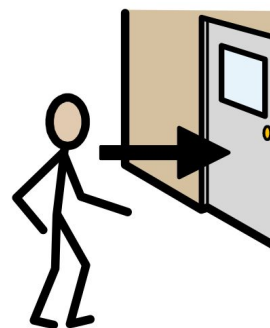
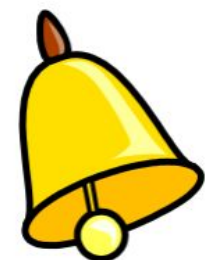
<https://www.brecknock.camden.sch.uk/parents/behaviour/>



Attendance and Punctuality



- The target for all children is 95%
- Please ensure if your child is absent for an unavoidable illness, you call the school before 9am to let us know.
- School registration and learning begin at 9am and finishes at 3:30pm, for all children. Therefore, the school gates will open at 8:50am and a bell will ring at 8:55am, allowing the children to be in class for a 9am start.
- We encourage you to monitor your child's attendance using Arbor to ensure their attendance remains excellent. Please ensure you download the Arbor App to access your child's profile and complete payments.



Uniform and Healthy Lunches

We have an agreed school uniform of white/yellow polo shirts with a school logo, and navy blue sweatshirts and fleeces. These are all on sale from the school office.

In addition, navy blue trousers or shorts/navy blue skirts or pinafore dresses can be worn.

We are going to start a *Uniform Swap* on Fridays where we will be asking parents to donate any old uniform that could be re-distributed. More information on this will follow in the Newsletter.



This year we will be focusing on becoming an even healthier school.

Please ensure your child brings a healthy packed lunch, with at least one piece of fruit.



Also, please remember that we are a water only school.

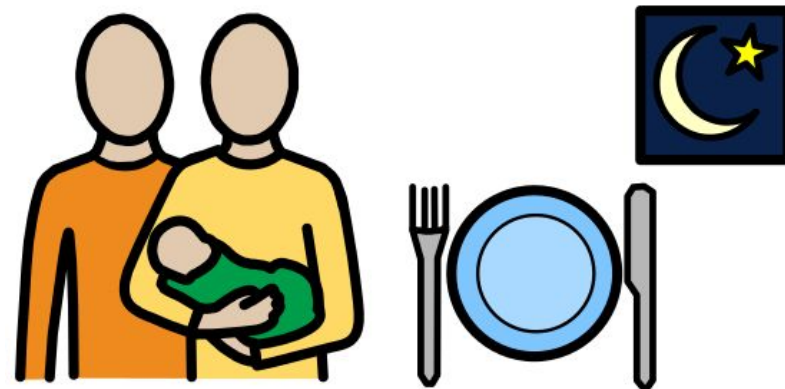


Friends of Brecknock

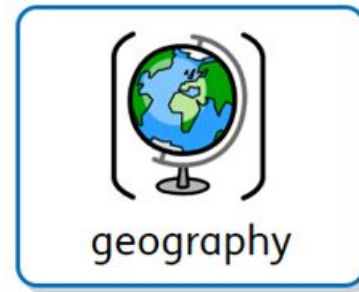
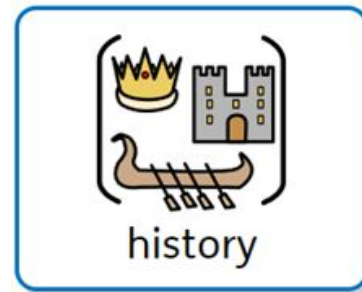
As you know we have many exciting community events throughout the year and the first one is a favourite for many of us. Family Supper takes place on November 22nd, with dishes from around the world and melodious music.

We are always looking for parents to help make these events great by offering their time and expertise. If you would like to join Friends of Brecknock, please let the office or a member of SLT know.

Or just come along to our first Friends of Brecknock meeting on Wednesday 20th September at 9.00am in the Dining Hall.



History and geography



This term our focus will be on History, we will be learning about World War I. We will also be learning about trade and the the effects of colonisation.



What to expect in Year 6

In Maths we will start with place value up to 10,000,000.

In Science we will be learning about animals, including humans.

We are going to have a big focus on writing, with a particular focus on developing vocabulary and oracy. We will be learning from the book .



Reading Expectations



- Your child can swap their reading for pleasure book as regularly as they like. Access to books in class book corners.
- We have story time every day.
- Children should read their decodable book at home for at least 20 minutes every day.
- We encourage adults to read to and to listen to their child daily in Year 6, and write in their reading records, so we know they have read with you.

SATs

English

Reading

Spelling and grammar

Writing (not a test)

Maths

2 reasoning papers

1 arithmetic paper

SATs parent workshops
will be available.

Physical Education and Daily Mile

- P.E. twice a week (Mondays with Abdi and Fridays with Kate).
- Swimming will happen each day on the week of 25th September.
- Daily mile timetabled each day.
- Please have appropriate footwear on all days.



Carmen (Sports Coach)
Abdi (Assistant Sports Coach)

Knowledge Mats

VOCABULARY

capital city—the city where the government sits. London is the capital city of England and the UK.

Canal—a long, thin stretch of water that is made by humans for boats to travel along

city—a large town. London is a city.

forest—a large area where trees grow close together

Harbour—a sheltered port so that boats can be left there safely.

hill—a naturally raised area of land, which is not as high as a mountain.

port—a harbour area where ships load and unload goods or passengers

river—a large, natural stream of fresh water that flows into the sea or a lake.

skyscrapers—a very tall building with many floors

tourist—a person who is visiting a place for pleasure and interest, especially when they are on holiday.

town—a large group of houses, shops and buildings where people live and work. Towns are larger than villages but smaller than cities.

train station—a place on a railway line where trains stop for people to get on and off trains.

vegetation—plants, trees and flowers

village—a small group of houses, perhaps with a few shops.

WHAT CAME BEFORE

EYFS—Who Am I?

WHAT COMES NEXT

Year 2—Where We Live (London v Mogadishu)

Brecknock Primary School GEOGRAPHY KNOWLEDGE MAT

CAMDEN LOCAL STUDY

WHAT YOU SHOULD ALREADY KNOW

- The country I live in is called England. England is a country in the United Kingdom (England, Scotland, Wales and Northern Ireland)
- I live in London, the capital city of England. The geography of London is different to other places in the world in many ways.
- I live in Camden, which is in London

You can find out about the United Kingdom by using maps, atlases and globes. A useful piece of equipment to use, when finding out about direction, is a compass. A compass shows the directions North, South, East and West. It is also a good idea to go outside and observe the area for yourself. This is called fieldwork. You can use fieldwork to explore the school grounds and the local parks of Camden.

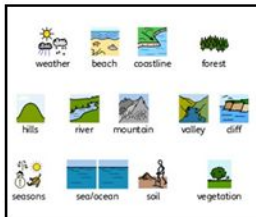
- Human geographical features are things built by humans
- Physical geographical features are things formed by nature and not by humans.

What human and physical features are there in Camden? What human and physical features are not in Camden? How is Camden different to other parts of the United Kingdom?

Human Geographical Features



Physical Geographical Features



KEY LEARNING

Camden Map



Parks: Hamstead Heath, Primrose Hill, Regent's Park, Caledonian Park

What can you see in Camden? Camden Markets, Camden Lock, Regent's Canal, London Zoo, St Pancras Old Church, Clocktower in Caledonian Park, The Roundhouse Music venue



GEOGRAPHICAL SKILLS AND FIELDWORK

Use aerial photographs to compare Camden and other cities. What is the same? What is different?

Use a map to find London and Camden

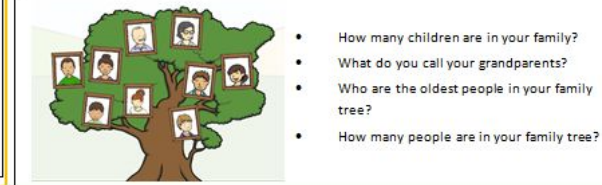
What can you tell people about Camden?

VOCABULARY

- after** later in time than, or behind in order
- Before** at an earlier time; in the past
- Century** equal to one hundred years
- Chronology** the order of events in time
- differences** that are not like or the same as something else
- during** throughout the entire time of
- new** having recently arrived, been produced, or come into being
- now** at this time or in these times
- old** having existed for many years; not new.
- Older** somebody or something that has lived longer
- past** having happened or gone by at an earlier time
- Present** now or at this time; current
- sibling** a sister or a brother
- Similarity** something that is like something else
- slightly** a small amount; a little
- Usually** something that normal happens

Brecknock Primary School HISTORY KNOWLEDGE MAT

My Family



- How many children are in your family?
- What do you call your grandparents?
- Who are the oldest people in your family tree?
- How many people are in your family tree?

KEY LEARNING

What will I find out by the end of the unit?

- People that are older than me, were born before me.
- People that are younger than me, were born after me.
- Times were slightly different when my parents/carers were little.
- Times were very different when my grandparents were little.
- There was a time before my grandparents were born. Life was very different then. People wore different clothes, travelled in different ways, played with different toys and school was very different too.
- There are different types of families.

Stories which have families in them:

- The Happy Families series
- The Stick Man
- Goldilocks and the Three Bears
- Cinderella
- The Tiger Who Came To Tea
- Matilda

WHAT CAME BEFORE

Reception—Who Am I

WHAT COMES NEXT

Year 1—Changes Within Living Memory

Timeline



Residential to the Isle of Wight!

- Friday 13th - Monday 16th June 2024
- Payment plan dates and amounts (next slide)



Dates and Payment Plan - Isle of Wight

- Trip is - Friday 13th - Monday 16th June 2024
- Non-refundable deposit due on Wednesday 4th October
 - FSM £20
 - Non-FSM £40
- All payments need to be made by March 29th



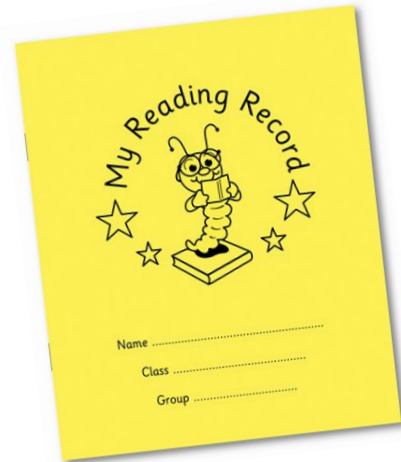
Example Payment Plan: £150.00 e.g. £30.00 every month	Example Payment Plan: £85.00 e.g. £17.00 every month
By November 30 th - £30.00	By November 30 th - £17.00
By December 31 st - £30.00	By December 31 st - £17.00
By January 31 st - £30.00	By January 31 st - £17.00
By February 29 th - £30.00	By February 29 th - £17.00
By March 29 th - £30.00	By March 29 th - £17.00

All payments are completed through Arbor

Home Learning



Google Forms



Who do I want to be? **Home Learning** Year 1

We are starting a new homework format. This sheet outlines the home learning to be completed for this half term. We have incorporated a hybrid of online and paper activities wherever possible, we will be sticking copies of paper based activities into their home learning books. If you are happy to just access these online then let a member of the team know. The home learning book can be used in anyway to help with the learning your child does at home- phonics practice, drawing, research, handwriting practice or anything they want to share!

Weekly recap:
Each week, children will be assigned a recap sheet from a lesson that we have completed in class. These will be stuck into the home learning book and shared on the google classroom.

Maths fluency practice:
Use the maths activities in your book to practice your fluency of addition and subtraction within 20.
Use your child's USO login to access many games and activities on **Education City** through the LGFL.

Phonics:
Use the table provided on a separate sheet to follow what sounds have been taught or recapped this half term. You are free to practice, write or play games with these sounds.

Memory quiz:
Follow the QR code for this half term's curriculum quiz! Children can use this to track their learning throughout the unit.
<https://forms.gle/rdLwv1k47cRwhpY8>
Have a go at the migration quiz from last half term too!
<https://forms.gle/f4xz3pCgjuheKwvGw5>

Weekly Quiz:
Each week, children will be assigned new questions on work covered in class. Take the quiz as many times as you like, we will share efforts in class.
<https://forms.gle/NuTaAaAwMYEKz7T7>

Daily reading:
Your child should read with you every night, recording the reading session into their 'monkey book', aka reading record, when possible.
We also have access to the 'Collins eLibrary' online provision, which mirrors the books your child reads in week in class. Your child has their login for this inside their monkey book.
Link and QR code to Collins google website for online reading:
<http://cpa.collinsopenpage.com/oa/login?service=http%3A%2F%2Fbooks.collinsopenpage.co>



Week 1	Example words
ay	play, spray, tray, crayon, day, slay
a-e	made, same, game, snake, amaze, lake
ea	bead, sea, read, heap, treat, least
e	fever, being, secret, me, we, she

Tricky Words

eye	sure	pure
said	were	people

Alien Words

vo!	quass	sloom
labe	jair	joil

Sentence

I have seen a green snake in the forest.



Google Forms



Home learning is practice! It reviews learning from school.

Who do I want to be? **Home Learning** Year 1

Autumn 1 Home Learning

INFORMATION

Weekly recap
LESSON SHEET

<p><u>Maths fluency practice</u></p> <p>1/2 TERM MATHS</p>	<p><u>Phonics</u></p> <p>1/2 TERM PHONICS</p>
<p><u>Memory quiz</u></p> <p>1/2 TERM QUIZ</p> <p></p>	<p><u>Weekly Quiz</u></p> <p>WEEKLY QUIZ</p> <p></p>

Daily reading

READING



Google Forms



In the book...

Half term

Home Learning

We are holding a mini 'homework' event. The sheet contains the same learning to be completed for this half term. We have incorporated a list of online and paper activities where possible, as well as adding copies of paper based activities into their same learning books. If you are happy to just access these online then that is a number of the time away.

The home learning book is used to engage the help with the learning year child view of their progress, parents, always record knowledge transfer or anything they want to add.

Weekly review
Each week, children will be assigned a 'keep and find' a book that we have completed in class. These will be added into the home learning book and added to the weekly classroom.

Maths/English practice
Use the maths activities in your book to practice your skills. Use your skills to solve the problems in the book.

Reading
Read the book provided in a notebook and follow the instructions. Use the book to help you with your reading.

Music/Art/PE
Follow the CD track for this half term's session and children can use this to create their learning throughout the week.

Weekly plan
Each week, children will be assigned a 'keep and find' a book that we have completed in class. These will be added into the home learning book and added to the weekly classroom.

Early reading
Your child should read with you every night, recording the reading session into their reading book. Use reading cards when possible.

We have been chosen to be the 'class' to be read to by the children in the school. We will be reading to the children in the school.

Half term

Week 1 Research words

ay: play, say, clay, soap, day, stay
at: back, seat, gate, under, about, cat
op: foot, top, soap, soap, soap, soap
o: foot, being, about, because, do

Look Words

cup	sun	pen
cat	word	people

Class Words

cat	cup	about
about	cup	cup

Homework

There is a good state in the book.

Week 2 Research words

ig: pig, dig, big, pig, dig, pig, dig, pig
ig: pig, dig, pig, dig, pig, dig, pig
ig: pig, dig, pig, dig, pig, dig, pig
ig: pig, dig, pig, dig, pig, dig, pig

Look Words

sun	sun	sun
today	today	today

Class Words

cat	cat	cat
cat	cat	cat

Homework

Use the pig to help read.

Week 3 Research words

ig: pig, dig, big, pig, dig, pig, dig
ig: pig, dig, big, pig, dig, pig, dig
ig: pig, dig, big, pig, dig, pig, dig
ig: pig, dig, big, pig, dig, pig, dig

Look Words

today	sun	pen
today	sun	pen

Class Words

cat	cat	cat
cat	cat	cat

Homework

Use the pig to help read.

Week 4 Research words

ig: pig, dig, big, pig, dig, pig, dig
ig: pig, dig, big, pig, dig, pig, dig
ig: pig, dig, big, pig, dig, pig, dig
ig: pig, dig, big, pig, dig, pig, dig

Look Words

today	sun	pen
today	sun	pen

Class Words

cat	cat	cat
cat	cat	cat

Homework

Use the pig to help read.

Half term

Complete the following calculations:
Addition and subtraction facts within 20

3 + 4 =	_____ + 1 = 9	_____ - 1 = 4
3 + 2 =	_____ + 4 = 5	_____ - 3 = 3
2 + 7 =	_____ + 3 = 7	_____ - 6 = 1
2 + 4 =	_____ + 4 = 6	_____ - 1 = 8
4 + 4 =	_____ + 6 = 8	_____ - 5 = 3
7 - 2 =	1 + _____ = 5	6 - _____ = 5
6 - 3 =	2 + _____ = 8	5 - _____ = 3
9 - 3 =	4 + _____ = 9	7 - _____ = 4
8 - 5 =	3 + _____ = 6	8 - _____ = 3
5 - 4 =	2 + _____ = 7	9 - _____ = 5

Weekly

Equipment List

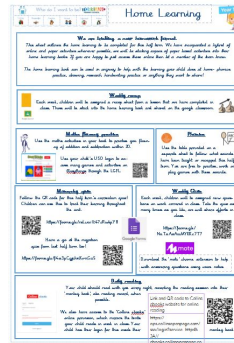
leader	hook
hook	hook
hook	hook

How to put up the equipment:

1. First clip the sun on to the hook.
2. Next climb up the ladder.
3. Then swing the sun into place.
4. After that someone down the ladder.
5. Finally smile at the sun.



Week 1	Example words
ay	play, spray, tray, crayon, day, stray
a-e	made, same, game, snake, amaze, take
ea	bead, sea, read, heap, treat, least
e	lever, being, secret, me, we, she
Tricky Words	
eye	sure pure
said	were people
Alien Words	
vo!	quass sloom
labe	jair joil
Sentence	
I have seen a green snake in the forest.	



Home Learning

- Online - aim is for the majority of learning to be completed online via Google Classroom
- Reading everyday- reading record
- Home Learning book
- Handed out on Tuesdays and returned on following Monday
- All resources will be available online each half term/week
- Teachers to send out new Google Classroom links during the first week back.

Home learning



Google Forms

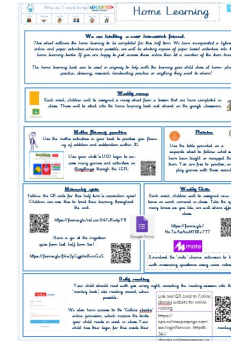
Week 1	Example words	
ay	play, spray, tray, crayon, day, stray	
a-e	made, same, game, snake, amaze, lake	
ea	bead, sea, read, heap, treat, least	
e	fever, being, secret, me, we, she	
Tricky Words		
eye	sure	pure
said	were	people
Alien Words		
vol	quass	sloom
labe	jair	joil
Sentence		
I have seen a green snake in the forest.		

- Feedback - teachers will spend time in class reviewing home learning.
- Work will be acknowledged by teachers e.g. values stickers, class discussion etc
- Parents/carers workshop to take place in September
- Spelling quiz book to stay in school- practice to be carried out in home learning book

Home Learning



Google Forms



Week 1	Example words	
ay	play, spray, tray, crayon, day, stray	
a-e	made, same, game, snake, amaze, lake	
ea	bead, sea, read, heap, treat, least	
e	fever, being, secret, me, we, she	
Tricky Words		
eye	sure	pure
said	were	people
Alien Words		
vo!	quass	sloom
labe	jair	joil
Sentence 		
I have seen a green snake in the forest.		

If you have concerns or issues regarding online access please speak to your class teacher.

Questions...