



# Meet the Team September 2023



# Who's who in Year 2?



2C: Chloe, Sophia, Federica & Shevonne  
2L: Lulu & Siddhartha



Helen Bruckdorfer  
Executive  
Headteacher



Lisa Hyland  
Head of School



Laura Lien  
Director of Inclusion  
and Learning



Naomi Cave  
Leader of Learning  
and Maths Specialist



Rachel Fields  
EYFS Leader

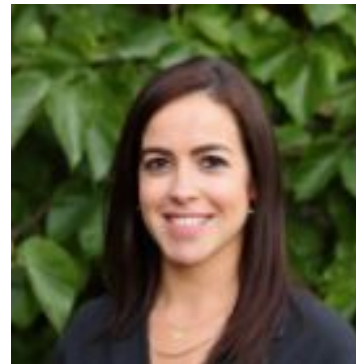


Marianna  
Slovackova  
SENCo

# Here to help - senior leadership



Maria Lewis  
School Business  
Manager



Kat Branco  
Director of Research  
School and  
Leader of Learning



# Pastoral Team



Ashleigh Jones is Child and Family Support Worker across the Federation.

John Clark is Learning Mentor and Pastoral Support at Brecknock.

Bernadette Biggs is Community Liaison Officer at Torriano.

Catriona Hale Pastoral Care Lead at Torriano.

Ryan Carroll is the SEN Assistant at Torriano.

# Here to Help - Admin



Lindsey Molyneux  
Finance and Communication  
Officer

Emily Furness  
Administrative Assistant



Jackie Williams  
School Admin Officer



# Here to help - Inclusion Team



Laura Lien is the Director of Inclusion across the Federation.

Marianna Slovackova is the SENCo at Brecknock.

Natalie Reilly is the Deputy SENCo across the Federation.

Sabrina is the Inclusion Assistant and HLTA at Brecknock.

Hannah Long is the SENCo at Torriano.

Rachel Clancy is the LRB Assistant at Torriano.

Finn Keatinge is the Inclusion Assistant at Torriano.

Ryan Carroll is the SEN Assistant at Torriano.

# Safeguarding



## Designated Safeguarding Leads



### Designated Safeguarding Lead

Laura Lien - Director of Inclusion  
Contact: 02074240202



### Deputy Safeguarding Lead

Helen Bruckdorfer – Executive Head Teacher  
Contact: 02074240202



### Deputy Safeguarding Lead

Marianna Slovackova - SENCO  
Contact: 02074240202



### Deputy Safeguarding Lead

Natalie Reilly – Deputy SENCO  
Contact: 02074240202

### Nominated governor for safeguarding:

Name: Alex Gardiner and Paul Smith  
Contact details: 02074240202

### Local Authority Designated Officer (LADO):

Name: Sonia Forbes  
Contact details: 020 7974 4556

### Camden MASH

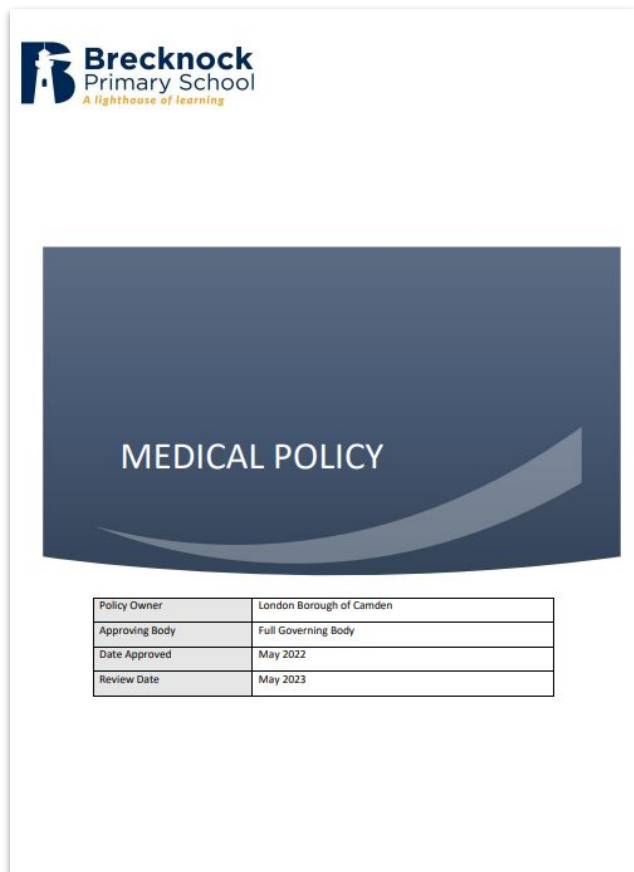
Contact details: 020 7974 3317 (9am to 5pm)  
Out of Hours Contact Details: 02079744444

### Islington MASH

Contact details: 02075277400 (9am to 5pm)  
Out of Hours Contact Details: 02072260992



# Medical Needs



Our medical needs policy is available on the school website. If your child requires any medicines in school, you can find further information there.

<https://www.brecknock.camden.sch.uk/wp-content/uploads/2022/07/Medical-Policy-2021-22.pdf>



# Enrichment



Carmen Blanco Crespo  
Sports Coach



Abdi Ahmed  
Sports Coach



Tom Cambata  
Music Teacher



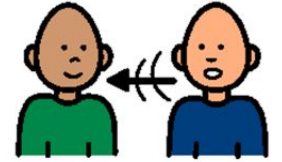
Rod Arran  
Specialist Teacher and  
Media Teacher



Justin Bioletti  
Computing Teacher



# Together, our Future Starts Here



We are going to continue with our whole school theme 'Together, Our Future Starts Here' which highlights how we will be working collaboratively across the Brecknock and Torriano partnership.

Our ambition is to increase our capacity to achieve SDG 17, Partnership for the Goals.

We will further develop our oracy and STEAM curriculum in our ambition to offer a horizon broadening, inclusive and creative curriculum.



# CAMDEN

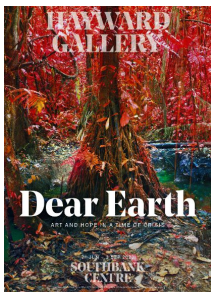
STEAM

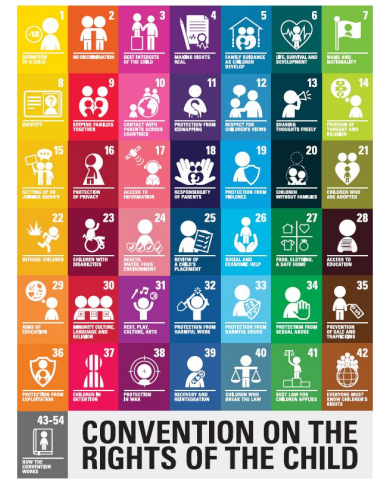


SCIENCE, TECHNOLOGY, ENGINEERING, ARTS AND MATHEMATICS

*Dear ...*

**DARWIN 200** 





KS1

Brecknock Primary is proud to be a Gold Rights Respecting school.

Who do I want to be?

Resilient

Giving

Healthy

Curious

An icon of a person lifting weights, representing resilience.An icon of a person handing a box to another person, representing giving.An icon of a person running, an apple, and a glass of water, representing health.An icon of a person looking through a magnifying glass, representing curiosity.

# Charter and Behaviour

# 1 2 3 Magic

Parent workshops to be announced.

What 'zone' am I in right now?



Link to the behaviour policy (on website):

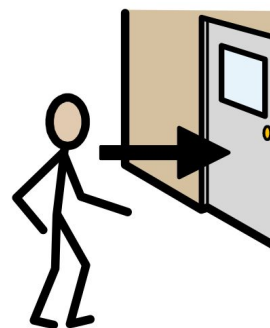
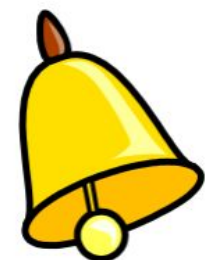
<https://www.brecknock.camden.sch.uk/parents/behaviour/>



# Attendance and Punctuality



- The target for all children is 95%
- Please ensure if your child is absent for an unavoidable illness, you call the school before 9am to let us know.
- School registration and learning begin at 9am and finishes at 3:30pm, for all children. Therefore, the school gates will open at 8:50am and a bell will ring at 8:55am, allowing the children to be in class for a 9am start.
- We encourage you to monitor your child's attendance using Arbor to ensure their attendance remains excellent. Please ensure you download the Arbor App to access your child's profile and complete payments.



# Uniform and Healthy Lunches

We have an agreed school uniform of white/yellow polo shirts with a school logo, and navy blue sweatshirts and fleeces. These are all on sale from the school office.

In addition, navy blue trousers or shorts/navy blue skirts or pinafore dresses can be worn.

We are going to start a *Uniform Swap* on Fridays where we will be asking parents to donate any old uniform that could be re-distributed. More information on this will follow in the Newsletter.



This year we will be focusing on becoming an even healthier school.

Please ensure your child brings a healthy packed lunch, with at least one piece of fruit.



Also, please remember that we are a water only school.

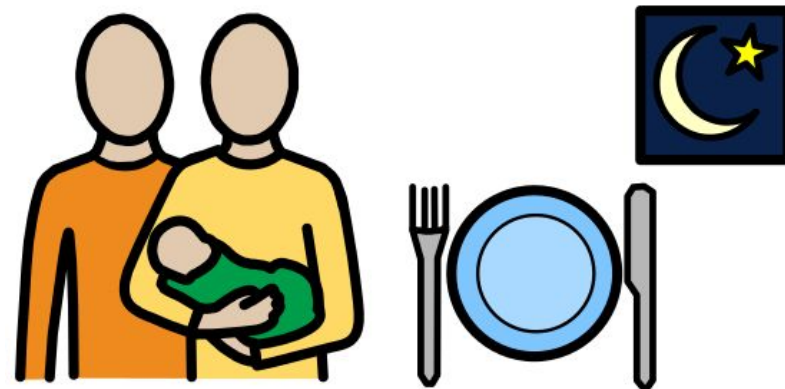


# Friends of Brecknock

As you know we have many exciting community events throughout the year and the first one is a favourite for many of us. Family Supper takes place on November 22nd, with dishes from around the world and melodious music.

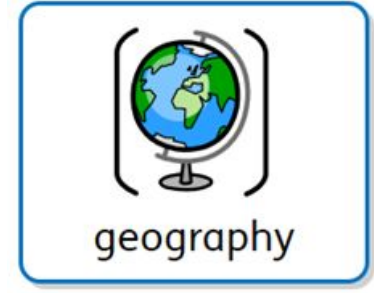
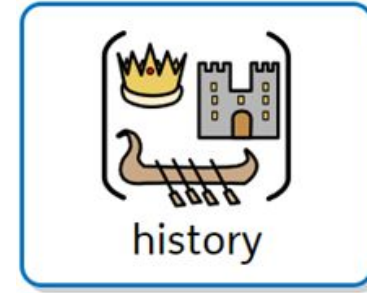
We are always looking for parents to help make these events great by offering their time and expertise. If you would like to join Friends of Brecknock, please let the office or a member of SLT know.

Or just come along to our first Friends of Brecknock meeting on Wednesday 20th September at 9.00am in the Dining Hall.

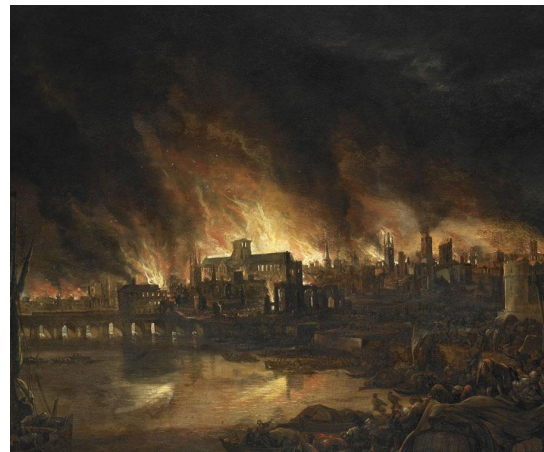




# History and geography



This term our focus will be on the Great Fire of London, we will be learning about significant people from that historical period and the events that led up to the Great Fire.



# What to expect in Year 2

In Maths we will start with place value to 100.

In Science we will be learning about Use of Everyday Materials.

We are going to have a big focus on writing, with a particular focus on developing vocabulary and oracy. We will be learning from the book 'The Baker Boy and the Great Fire of London' By Tom Bradman and Tony Bradman.



# Reading Expectations



- Your child can swap their reading for pleasure book as regularly as they like. Access to books in class book corners.
- We have story time every day.
- Children should read their decodable book at home for at least 5-10 minutes everyday.
- We encourage adults to read to and to listen to their child daily in Year 2, and write in their reading records, so we know they have read with you.

# Physical Education and Daily Mile

- P.E. twice a week Monday and Thursday
- Daily mile timetabled each day.
- Please have appropriate footwear on all days.



Carmen (Sports Coach)  
Abdi (Assistant Sports Coach)

# Knowledge Mats

## VOCABULARY

**capital city**—the city where the government sits. London is the capital city of England and the UK.

**Canal**—a long, thin stretch of water that is made by humans for boats to travel along

**city**—a large town. London is a city.

**forest**—a large area where trees grow close together

**Harbour**—a sheltered port so that boats can be left there safely.

**hill**—a naturally raised area of land, which is not as high as a mountain.

**port**—a harbour area where ships load and unload goods or passengers

**river**—a large, natural stream of fresh water that flows into the sea or a lake.

**skyscrapers**—a very tall building with many floors

**tourist**—a person who is visiting a place for pleasure and interest, especially when they are on holiday.

**town**—a large group of houses, shops and buildings where people live and work. Towns are larger than villages but smaller than cities.

**train station**—a place on a railway line where trains stop for people to get on and off trains.

**vegetation**—plants, trees and flowers

**village**—a small group of houses, perhaps with a few shops.

**WHAT CAME BEFORE**

EYFS—Who Am I?

**WHAT COMES NEXT**

Year 2—Where We Live (London v Mogadishu)

## Brecknock Primary School GEOGRAPHY KNOWLEDGE MAT

### CAMDEN LOCAL STUDY

**WHAT YOU SHOULD ALREADY KNOW**

- The country I live in is called England. England is a country in the United Kingdom (England, Scotland, Wales and Northern Ireland)
- I live in London, the capital city of England. The geography of London is different to other places in the world in many ways.
- I live in Camden, which is in London

You can find out about the United Kingdom by using maps, atlases and globes. A useful piece of equipment to use, when finding out about direction, is a compass. A compass shows the directions North, South, East and West. It is also a good idea to go outside and observe the area for yourself. This is called fieldwork. You can use fieldwork to explore the school grounds and the local parks of Camden.

- Human geographical features are things built by humans
- Physical geographical features are things formed by nature and not by humans.

What human and physical features are there in Camden? What human and physical features are not in Camden? How is Camden different to other parts of the United Kingdom?

**Human Geographical Features**

**Physical Geographical Features**

## KEY LEARNING



**Parks:** Hamstead Heath, Primrose Hill, Regent's Park, Caledonian Park

**What can you see in Camden?** Camden Markets, Camden Lock, Regent's Canal, London Zoo, St Pancras Old Church, Clocktower in Caledonian Park, The Roundhouse Music venue



### GEOGRAPHICAL SKILLS AND FIELDWORK

Use aerial photographs to compare Camden and other cities. What is the same? What is different?

Use a map to find London and Camden

What can you tell people about Camden?

## VOCABULARY

- after** later in time than, or behind in order
- Before** at an earlier time; in the past
- Century** equal to one hundred years
- Chronology** the order of events in time
- differences** that are not like or the same as something else
- during** throughout the entire time of
- new** having recently arrived, been produced, or come into being
- now** at this time or in these times
- old** having existed for many years; not new.
- Older** somebody or something that has lived longer
- past** having happened or gone by at an earlier time
- Present** now or at this time; current
- sibling** a sister or a brother
- Similarity** something that is like something else
- slightly** a small amount; a little
- Usually** something that normal happens

## Brecknock Primary School HISTORY KNOWLEDGE MAT

### My Family



- How many children are in your family?
- What do you call your grandparents?
- Who are the oldest people in your family tree?
- How many people are in your family tree?

## KEY LEARNING

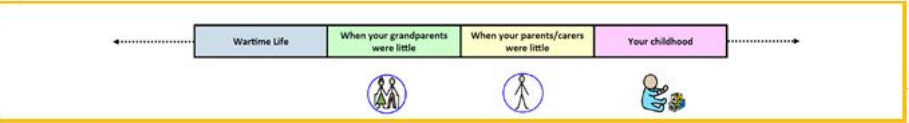
What will I find out by the end of the unit?

- People that are older than me, were born before me.
- People that are younger than me, were born after me.
- Times were slightly different when my parents/carers were little.
- Times were very different when my grandparents were little.
- There was a time before my grandparents were born. Life was very different then. People wore different clothes, travelled in different ways, played with different toys and school was very different too.
- There are different types of families.

**Stories which have families in them:**

- The Happy Families series
- The Stick Man
- Goldilocks and the Three Bears
- Cinderella
- The Tiger Who Came To Tea
- Matilda

## Timeline



**WHAT CAME BEFORE**

Reception—Who Am I

**WHAT COMES NEXT**

Year 1—Changes Within Living Memory



# Exciting Trips and Projects

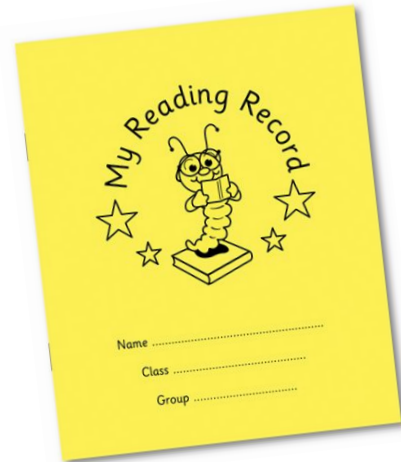
We are planning to go and visit The Monument which commemorates the Great Fire and also visit Pudding Lane.



# Home Learning



Google Forms



Who do I want to be? **Home Learning** Year 1

We are starting a new homework format. This sheet outlines the home learning to be completed for this half term. We have incorporated a hybrid of online and paper activities wherever possible, we will be sticking copies of paper based activities into their home learning books. If you are happy to just access these online then let a member of the team know. The home learning book can be used in anyway to help with the learning your child does at home- phonics practice, drawing, research, handwriting practice or anything they want to share!

**Weekly recap:** Each week, children will be assigned a recap sheet from a lesson that we have completed in class. These will be stuck into the home learning book and shared on the google classroom.

**Maths fluency practice:** Use the maths activities in your book to practice your fluency of addition and subtraction within 20. Use your child's USO login to access many games and activities on **Education City** through the LGFL.

**Phonics:** Use the table provided on a separate sheet to follow what sounds have been taught or recapped this half term. You are free to practice, write or play games with these sounds.

**Memory quiz:** Follow the QR code for this half term's curriculum quiz! Children can use this to track their learning throughout the unit. <https://forms.gle/rdLwv1k47cRwhpY8>

Have a go at the migration quiz from last half term too! <https://forms.gle/f4x3pCgjuheKwvGw5>

**Weekly Quiz:** Each week, children will be assigned new questions on work covered in class. Take the quiz as many times as you like, we will share efforts in class. <https://forms.gle/NuTaAaAwMYEKz7T7>

Download the 'mote' chrome extension to help with answering questions using voice notes.

**Daily reading:** Your child should read with you every night, recording the reading session into their 'monkey book', aka reading record, when possible. We also have access to the 'Collins eLibrary' online provision, which mirrors the books your child reads in week in class. Your child has their login for this inside their monkey book.

Link and QR code to Collins eLibrary website for online reading. <http://cpa.collinscpnpage.com/oa/login?service=http%3A%2F%2Fbooks.collinscpnpage.co>



Week 1	Example words
ay	play, spray, tray, crayon, day, slay
a-e	made, same, game, snake, amaze, lake
ea	bead, sea, read, heap, treat, least
e	fever, being, secret, me, we, she

**Tricky Words**

eye	sure	pure
said	were	people

**Alien Words**

vo!	quass	sloom
labe	jair	joil

**Sentence**

I have seen a green snake in the forest.



Google Forms



Home learning is practice! It reviews learning from school.

Who do I want to be? Home Learning Year 1

Autumn 1 Home Learning

**INFORMATION**

Weekly recap

LESSON SHEET

<p><u>Maths fluency practice</u></p> <p>1/2 TERM MATHS</p>	<p><u>Phonics</u></p> <p>1/2 TERM PHONICS</p>
<p><u>Memory quiz</u></p> <p>1/2 TERM QUIZ</p>	<p><u>Weekly Quiz</u></p> <p>WEEKLY QUIZ</p>

Daily reading

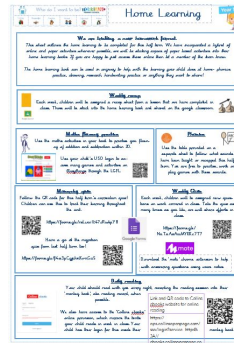
**READING**







Week 1	Example words	
ay	play, spray, tray, crayon, day, stray	
a-e	made, same, game, snake, amaze, take	
ea	bead, sea, read, heap, treat, least	
e	lever, being, secret, me, we, she	
Tricky Words		
eye	sure	pure
said	were	people
Alien Words		
vo!	quass	sloom
labe	jair	joil
Sentence		
I have seen a green snake in the forest.		



# Home Learning

- Online - aim is for the majority of learning to be completed online via Google Classroom
- Reading everyday- reading record
- Home Learning book
- Handed out on Tuesdays and returned on following Monday
- All resources will be available online each half term/week
- Teachers to send out new Google Classroom links during the first week back.

# Home learning



Google Forms

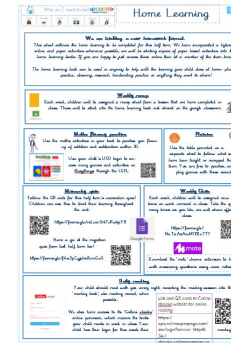
Week 1	Example words	
ay	play, spray, tray, crayon, day, stay	
a-e	made, same, game, snake, amaze, lake	
ea	bead, sea, read, heap, treat, least	
e	fever, being, secret, me, we, she	
Tricky Words		
eye	sure	pure
said	were	people
Alien Words		
vol	quass	sloom
labe	jair	joil
Sentence		
I have seen a green snake in the forest.		

- Feedback - teachers will spend time in class reviewing home learning.
- Work will be acknowledged by teachers e.g. values stickers, class discussion etc
- Parents/carers workshop to take place in September
- Spelling quiz book to stay in school- practice to be carried out in home learning book

# Home Learning



Google Forms



Week 1	Example words	
ay	play, spray, tray, crayon, day, stray	
a-e	made, same, game, snake, amaze, lake	
ea	bead, sea, read, heap, treat, least	
e	fever, being, secret, me, we, she	
Tricky Words		
eye	sure	pure
said	were	people
Alien Words		
vo!	quass	sloom
labe	jair	joil
Sentence 		
I have seen a green snake in the forest.		

If you have concerns or issues regarding online access please speak to your class teacher.

# Questions...