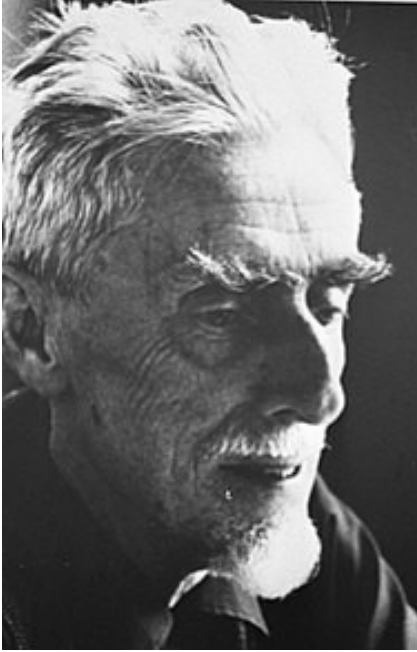
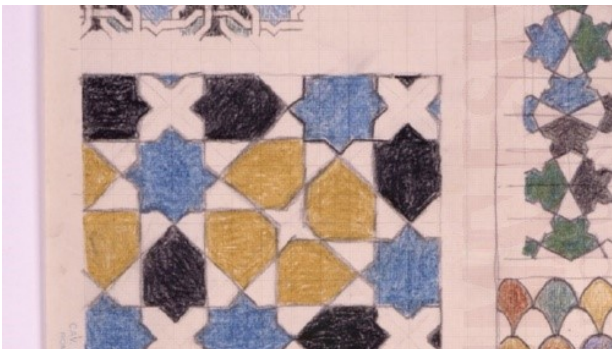


# M.C. Escher

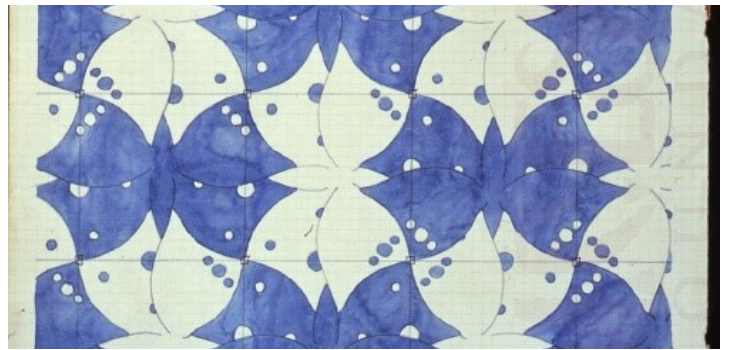


- 1) M.C. Escher was a Dutch artist born in 1898 in Friesland, Netherlands.
- 2) Between 1919 –1922 he studied at the Haarlem School of Architecture and Decorative Arts. Although Escher didn't do very well at school, he was a very talented artist.
- 3) Whilst visiting the Alhambra palace in Spain, he became fascinated with the mathematical designs and patterns he saw there.
- 4) This visit inspired Escher to produce his own artwork based on tessellations. Tessellations are created when shapes are repeated again and again with no gaps or overlapping.

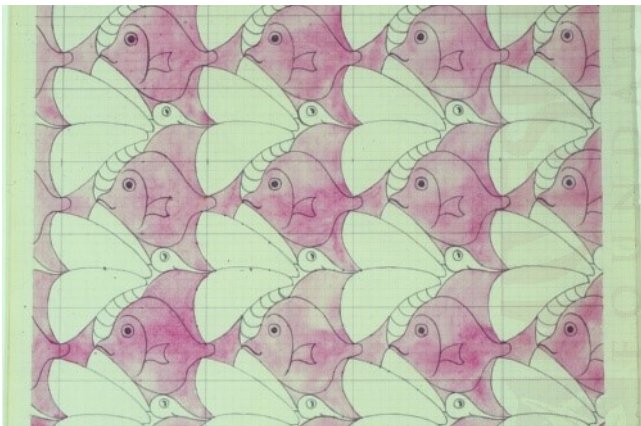
## Let us have a look at some examples of Escher's work!



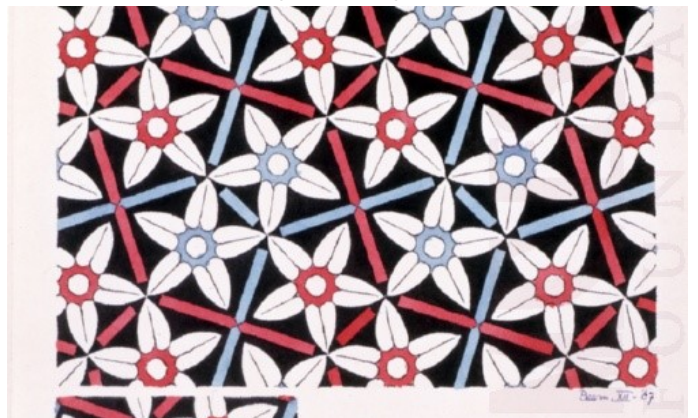
Alhambra - 1936



Symmetry- 1938



2 Motifs Transitional System - 1939



Symmetry Drawing E132 - 1967

For your task today, we would like you to either recreate one of the tessellation designs above or, research other designs by Escher and choose one of those instead.

We would love to see your design if you would like to share it.