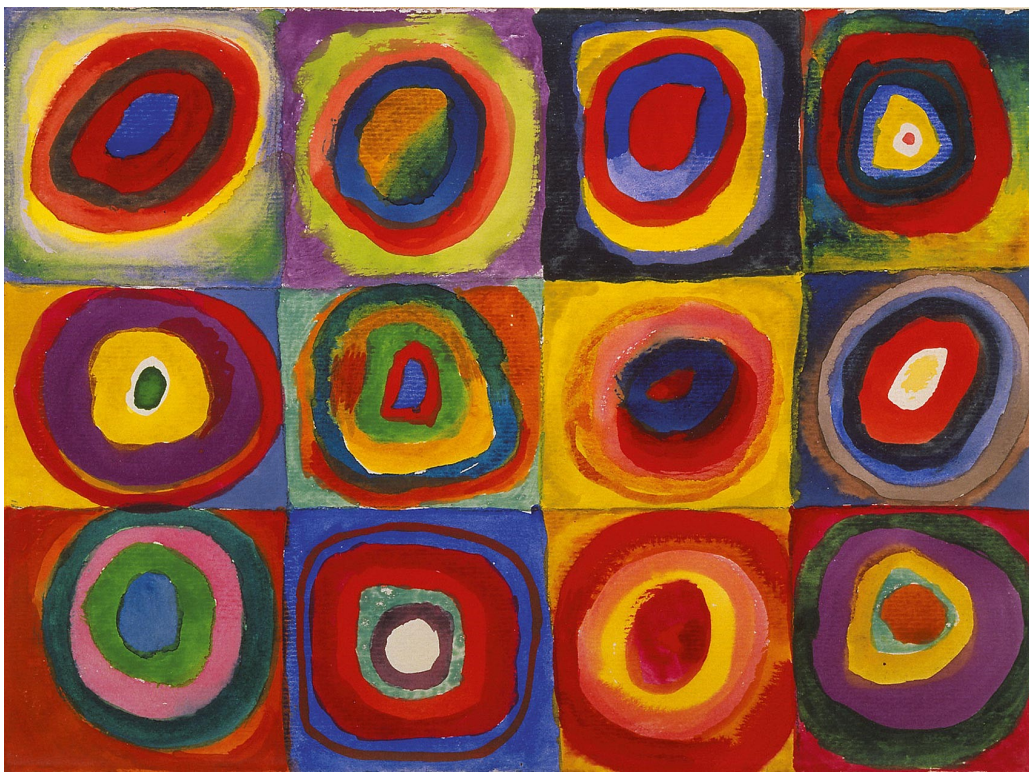


Wassily Kandinsky

This is one of Kandinsky's famous paintings. It is called 'Squares with Concentric Circles' and it was painted in 1913. Notice how the circles are not perfectly round! Look at the beautiful colours he has used.

For your task, we would like you to recreate the painting below. You can use paint, felt tips, colouring pencils, paper, card or even lids from plastic bottles glued into one another! Be as creative as you like!



Here are some examples to inspire you. Feel free to share your work with us!

