

# Brecknock Year 6 Wider Curriculum Home Learning Matrix

## Art

Choose an artist:

- Roy Lichtenstein
- Frida Kahlo
- Pablo Picasso

We have been looking at self-portraits and how self-image is captured. Google image search these author's style and create a self-portrait in their style. Bonus points if it is colourful OR uses different media i.e. collage, paint, fabric, etc.

## Computing

Log on to Scratch at <https://scratch.mit.edu/ideas>

Check out how to make a Pong Game. Follow the online tutorial then send it to your teacher to try it out!

Feeling extra spicy? Try out their Chasing Game Tutorial:

<https://scratch.mit.edu/projects/edit-or/?tutorial=all>

## SCIENCE

Choose two of the vertebrate groups: reptiles, amphibians, mammals, birds and fish

Research what makes them similar and what makes them different. Put it in a small table and discuss which kind of animal you would prefer to be. Give reasons and research as evidence for your choice.

Mammals and Birds

| Similarities | Differences |
|--------------|-------------|
|              |             |

*I would rather be a... because...*

## SCIENCE

But wait...what about us?

### Arthropods



bee



ladybug



butterfly

Although they may look creepy and crawly, they are very important to our ecosystems! Look up what an 'arthropod' is and choose one of them. Research the role it plays in our lives and why they are needed on the planet – the reasons may surprise you!

## French

Can you count up to 100 en français?  
Now's your chance!

Create a matching game where one card is the English number and one is written en français. Play with your family and bring it back to school for your teacher. Et voilà! C'est magnifique!

twelve

douze

## Geography

London is a very old place with a lot of history. The area around Brecknock has existed for hundreds of years!

Draw a map of your local neighbourhood. Make it as detailed and colourful as possible. Check out this example:

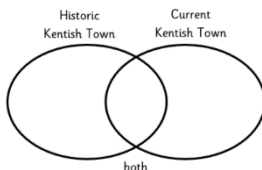


## History

Do you recognise this place:

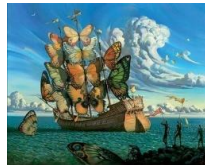


How does it compare to Kentish Town Station now? Compare the historical photo to the Kentish Town we know. Use a Venn Diagram to capture as many details as possible.



## Art

Salvidore Dali was the master of surrealism and mixing interesting images together like so:



Look through magazines, newspapers or the internet to find interesting images. Create a collage by sticking these images onto a picture you've drawn. Bonus points if you swap out ordinary, everyday items for the surreal, like the butterfly sails on Dalí's painting.

## Computing

Think you're a fast typer eh?  
Let's put those hands to the test!

Log on to:

<https://www.bbc.co.uk/bitesize/topics/zf2f9j6/articles/z3c6tfr>

To try to beat my speed. BUT make sure you are using the correct fingers – no cheating allowed!