

Tiggy's Group Name _____

Measuring
(including decimals)

Homework Due back 31.10.16

You can jot down notes anywhere on this paper.

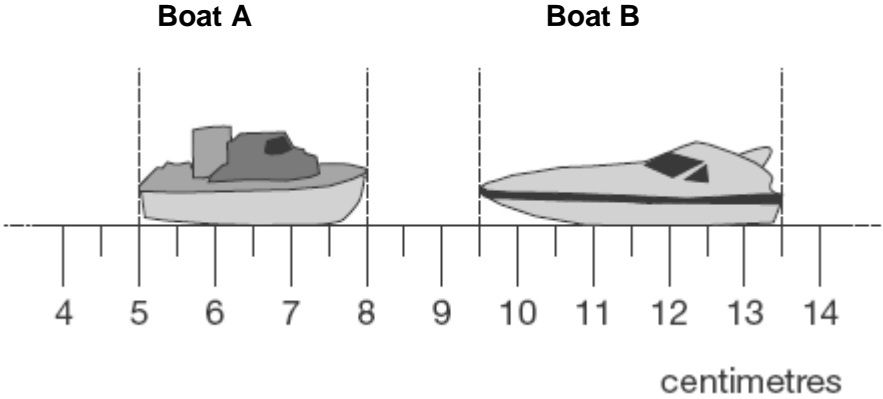
Pupil



Teacher



Q1. Here are two model boats on a centimetre scale.



Actual size

How long is boat A?

cm

1 mark

How long is boat B?

cm

1 mark

How far apart are the boats?

cm

1 mark

What is the **difference** in the lengths of the two boats?

cm

1 mark

Q2. Choose one of the words in the box to complete each sentence below.

kilograms
litres
centimetres

You can measure how tall you are
in



You can measure how heavy you are
in

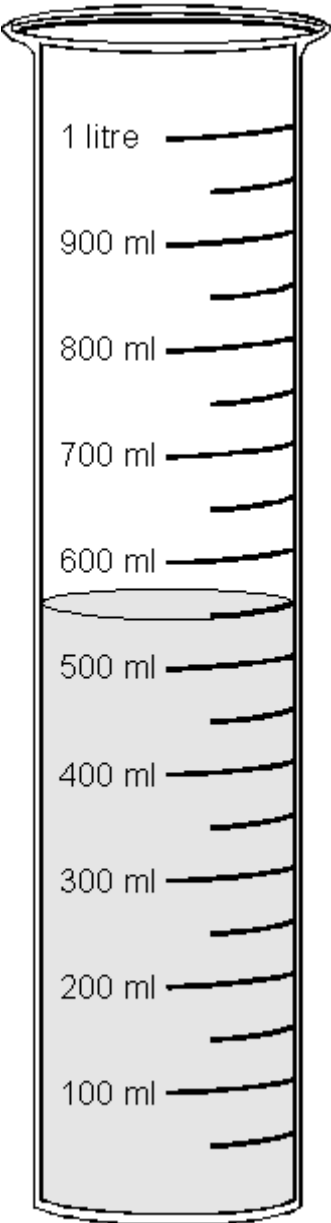


You can measure how much you drink
in



1 mark

Q3.



ml → **millilitre**

How much water is in this container?

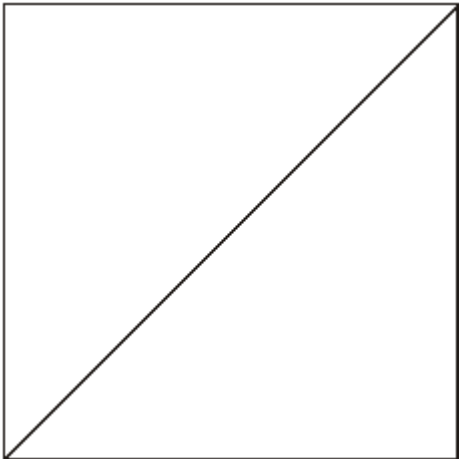
ml

1 mark

How much more water is needed to make 1 litre?

ml

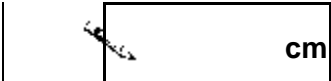
1 mark



Q4.

Measure accurately the length of the **diagonal** of this square.

Give your answer in **centimetres**.


 cm

1 mark

Q5. Write these lengths in order, starting with the shortest.

$\frac{1}{2}$ m 3.5cm

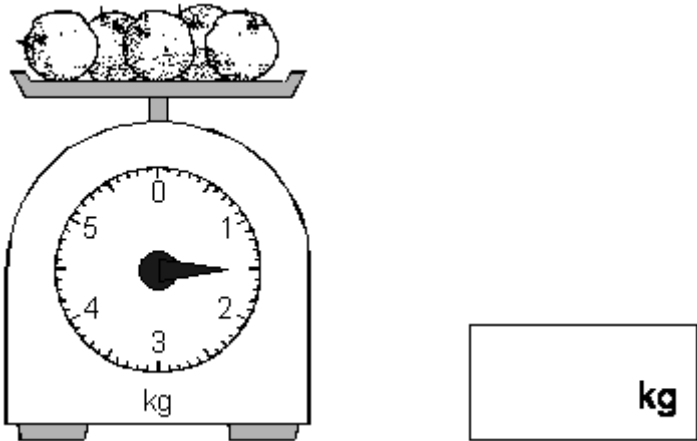
25mm 20cm



shortest

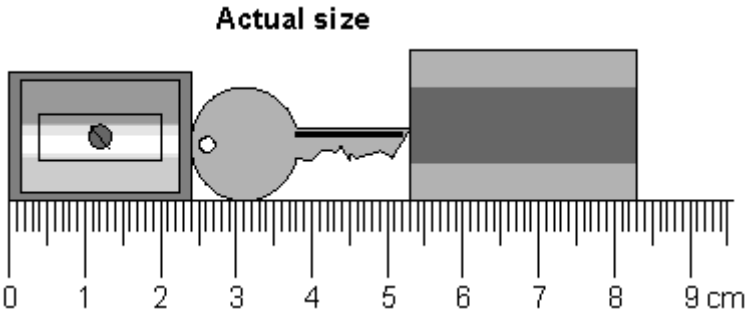
1 mark

Q6. What is the total mass of these apples?



1 mark

Q7. Here are a pencil sharpener, a key and a rubber.



What is the length of **all three things** together?

Give your answer in **millimetres**.

mm

1 mark

What is the length of the **rubber**?

Give your answer in **millimetres**.

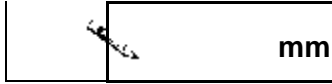
mm

1 mark

Q8 (Look at the diagram for question 7)

What is the length of the **key**?

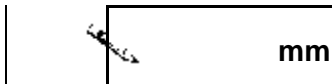
Give your answer in **millimetres**.



1 mark

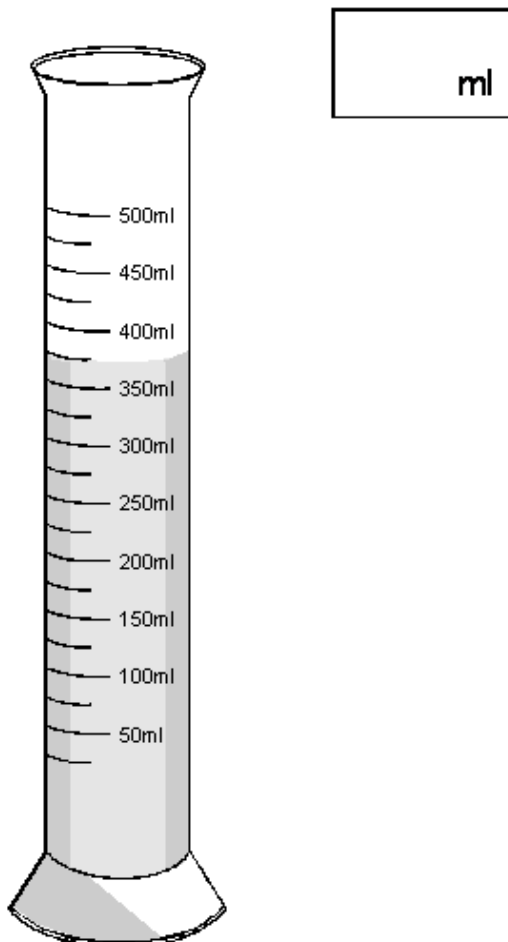
What is the length of the **pencil sharpener**?

Give your answer in **millimetres**.



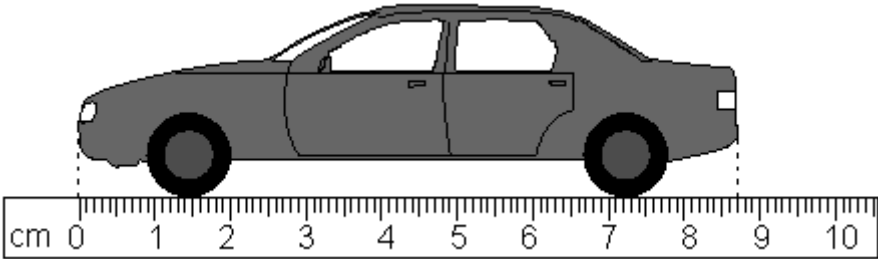
1 mark

Q9. How much water is in this container?



1 mark

Q10. Here is a drawing of a model car.



What is the **length** of the model?

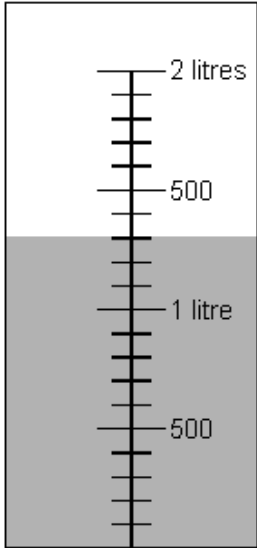
Give your answer in **centimetres**, correct to one decimal place.

cm

1 mark

Q11. This is the scale on the side of a measuring jar.

There is some coloured water in the jar.



How much water is in the jar ?

ml

1 mark

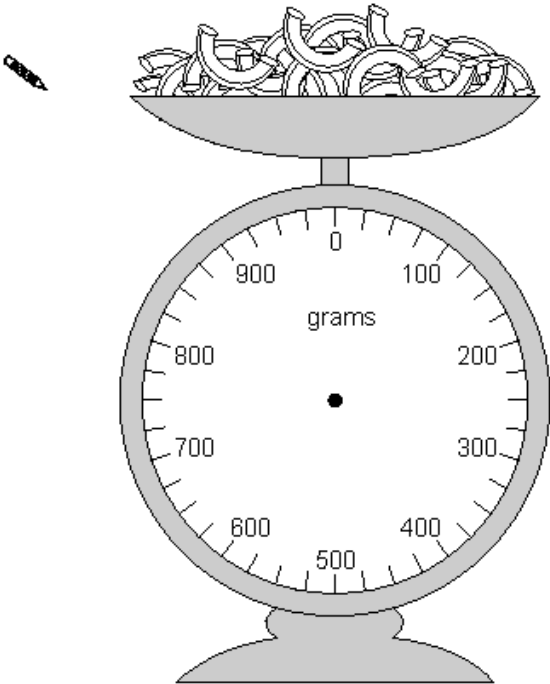
How much **more** water is needed to make **2 litres**?

ml

1 mark

Q12. Jamie is cooking pasta.
He weighs 350 grams of pasta.

Draw an arrow on the scale to show 350 grams.

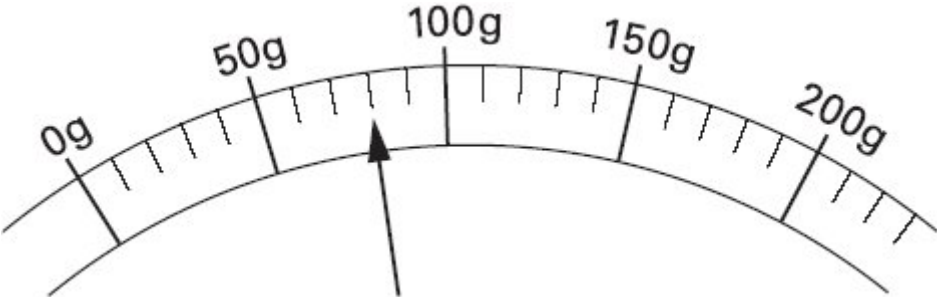


1 mark

Q13.



Here is a scale which shows the weight of a letter.

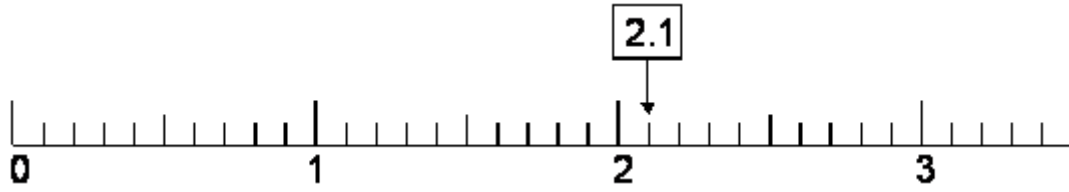


How much does the letter weigh?

grams

1 mark

Q14. 2.1 is marked on the number line.



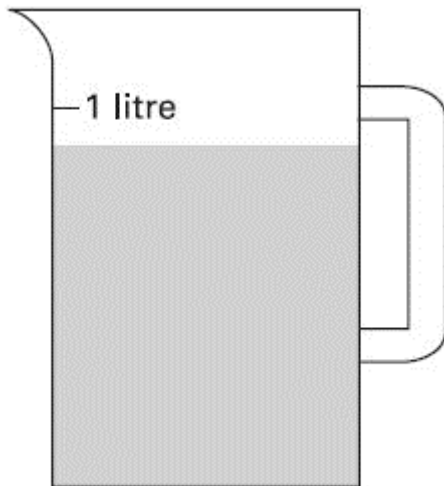
Mark **0.65** on the number line.

1 mark

Q15. Sophie poured some water out of a **litre** jug.

Look how much is left in the jug.

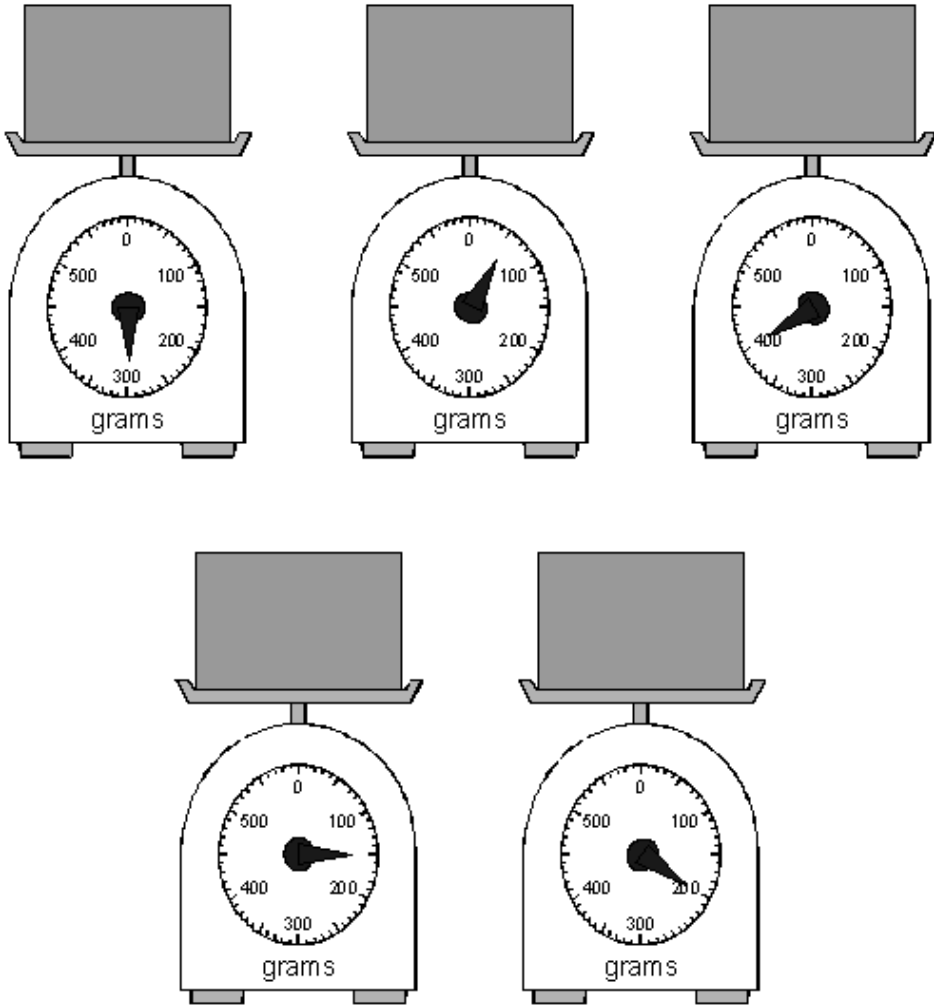
Estimate how many millilitres of water are left.



ml

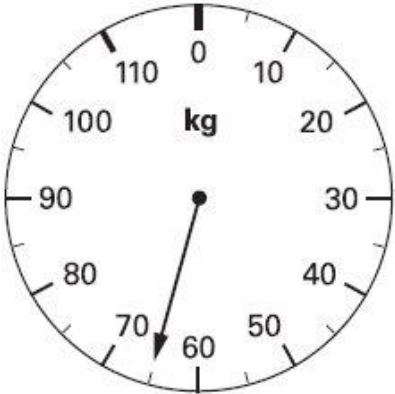
1 mark

Q16. Put a ring around the **lightest** box.



1 mark

Q17. This scale shows how much Mrs Patel weighs.



How much does Mrs Patel weigh?

kg

1 mark

Q18 Write the following measures as **decimals**.

1 litre and 300 milliliters _____

6 litres and 800 milliliters _____

7 and a half litres _____

2 marks

4 kilograms and 900 grams _____

3 and a quarter kilograms _____

5 kilograms and 20 grams _____

2 marks