

# Starting school in Camden 2016



Camden schools:  
**Bright** futures

Applying for places at primary, infant and junior schools between September 2016 and July 2017



## Apply online

[camden.gov.uk/admissions](http://camden.gov.uk/admissions) Closing date: 15 January 2016

## First class schools, first class education

[camden.gov.uk/admissions](http://camden.gov.uk/admissions)

 Camden

# Contents

<b>Welcome</b>	<b>3</b>
<b>List of educational terms</b>	<b>4</b>
List of educational terms	4
Useful contacts for information and advice	7
Neighbouring local authorities	7
<b>Section 1: Overview</b>	
Where and how do I apply?	8
Starting school timetable	10
<b>Section 2: Applying for schools</b>	
Completing your application	11
How to decide which school to apply for	17
Mythbusters	20
Frequently asked questions	21
<b>Section 3: Admissions criteria and Camden schools</b>	
Map of Camden's schools	26
Community school admissions criteria	27
Camden's primary schools	30
<b>Section 4: Results and appeals</b>	
Application results	66
Appeals	67
Results and statistics	69
<b>Section 5: Early learning and childcare</b>	
Three and four year-olds	71
Two year-olds	72
Nursery admissions criteria	72
Children's centres and nurseries, voluntary, private and independent early education providers	74
<b>Section 6: Further useful information</b>	
Special educational needs (SEN)	77
Special schools and units	78

# Welcome

## Dear parents and carers

This booklet is designed to help you find a school place for your child.

It is for parents or carers whose children start school for the first time in September 2016, as well as those with older children who are moving into the area or changing schools during the school year. This booklet also includes information about local childcare and early education places.

A higher percentage of children - an amazing 96.1% - attend good or outstanding primary schools in Camden than almost anywhere else in the country, according to Ofsted.

Primary pupils in Camden also perform consistently above the national average in test results for 11 year-olds. In 2015 provisional results show that 86% of pupils achieved the required level in reading, writing and maths in Camden, compared with 80% nationally.

As well as excellent and innovative teaching that gets great results, our schools offer a broad, enriched curriculum including music, creative arts and sports, as well as visits to some of the best museums and galleries in the world on our doorstep in Camden.

This booklet includes details of Camden schools for anyone applying for reception places in the borough. It also includes the admissions criteria which are used to offer places if there are more applicants than places available.

The section on how to apply for a school place is for Camden residents. If you live in another borough and are applying to Camden schools you will need to check with your own local authority, although the process is likely to be the same and offers are co-ordinated across London.

Applications for reception places are handled by Camden Council's school admissions teams. You can apply online at [www.eadmissions.org.uk](http://www.eadmissions.org.uk) or, if you are having trouble applying online, contact Camden admissions (see below).

Information about the schools, children's centres and voluntary, private and independent early education and childcare providers in Camden is on pages 71-76. Voluntary, private and independent children's centres provide places for three and four year-old children who are eligible for the national free nursery offer of 15 hours per week.

Camden Council has extended this offer and is offering local people free 25-hour nursery places for three and four-year olds in our schools and children centres. This offer is subject to local availability and individual schools' admissions policies.

Free 15 hours per week early education and childcare places are also available for two year-olds whose families meet the national criteria for low income (see section five, page 71).

If you want more help or advice about admissions, you can email [admissions@camden.gov.uk](mailto:admissions@camden.gov.uk) or call the school admissions team on **020 7974 1625**.



**Martin Pratt**  
Director of Children,  
Schools and Families  
Camden Council



**Councillor  
Angela Mason CBE**  
Cabinet Member for Children  
Camden Council

# List of educational terms

## **Academy**

A state school which is independent of the Council. See [gov.uk/df](http://gov.uk/df) for further details. King's Cross Academy opened in Camden in September 2015 (see page 45).

## **Children's centre**

Children's centres in Camden provide a complete range of services designed to offer support during your child's first months until they reach the age of five years. See pages 71-76 for more details.

## **Community school**

A school built, maintained, and staffed by a local authority, the full cost falling to public funds.

## **Curriculum**

The programme of work and activities of a school to meet the pupils' needs. It includes the National Curriculum.

## **Free school**

An all-ability state school set up independently from the local authority with the agreement of the government. For more details on free schools visit [gov.uk/df](http://gov.uk/df)

## **Infant school**

Schools for children aged from four to seven years (Reception and Key Stage 1).

## **Junior school**

Schools for children aged from seven to 11 years (Key Stage 2).

## **Key stage**

A period of study relating to a particular age group. Key Stage 1 covers school years 1 and 2 (age five to seven). Key Stage 2 covers school years 3 to 6 (age seven to 11). At the end of each Key Stage, parents will receive a formal assessment of their child's achievement in terms of the National Curriculum.

## **National Curriculum**

The core and foundation subjects as set out in the Education Act: English, maths, science, history, geography, art, music, physical education, design, computing.

## **Nursery class**

These are classes for children aged between three and five and are attached to a primary or infants' school. The classes are run and managed as part of the school, but pupils attending them are not on the roll of the main school.

## **Pan-London**

A co-ordinated admissions system that allows the transfer of admission applications between boroughs.

## **Pastoral care**

Arrangements for the welfare of individual pupils and the provision of the support which fosters all aspects of pupil learning and achievement.

## **Primary school**

Schools for children in Reception to Year 6, ages four to 11, or from ages three to 11 in those schools with a nursery class.

## **PTA/PSA**

Parent/teacher association or parent/staff association: voluntary association of the parents and teachers or staff of a school.

## **Pupil referral unit**

A school providing education for pupils needing support other than in a mainstream or special school.

## **School Council**

A committee of pupils for consultation purposes.

## **Reception class**

These are the “first year” classes in primary or infants schools which children enter at the age of four.

## **Resource base**

Dedicated provision within a mainstream school to meet the special educational needs of children with a specific type of need, or an exceptional level of need. Placements are made in the same way as placements in special school.

## **Special school**

Special schools are for children who have a particular special educational need – for example, a physical disability – which cannot be provided for in an ordinary school. Each special school has its own age limits. If you think your child has a special educational need, please see pages 77 and 78 to 79 of this booklet. Camden admissions do not place children in special schools.

## **Key Stage One assessments and Key Stage Two tests**

National assessments that take place in Year 2 and tests at the end of Year 6.

## **Statutory school age**

Children are of statutory school age from the beginning of the school term following their fifth birthday. For the first time this academic year pupils will be expected to remain in education or training until their 18th birthday.

## **Education, health and care plan**

These have replaced statements of special educational needs. See page 77.



## Voluntary aided school

A school built by a voluntary body but maintained by a local authority. The governors are responsible for the provision of the premises, the maintenance of the fabric of the school and staffing. Voluntary aided schools are also responsible for their own admissions, although the admissions team makes offers to all Camden parents on behalf of voluntary aided schools.

## Voluntary, private and independent pre-school provision

Provision that is not managed by the Council - providers work jointly with Camden Council, to provide early education places.

## Equal opportunities

It is the aim of Camden Council and all Camden's schools to make sure that no pupil, parent or carer is discriminated against on grounds such as race, ethnicity, sex, disability, class, sexuality, culture or language. Each Camden school has an equal opportunities policy which describes how it is working to:

- Remove any barriers to pupils' full participation in learning and school life.
- Counter the effects of discrimination and prejudice.
- Make sure that all members of the school community feel valued, respected and safe.

Harmonious relationships between pupils from different backgrounds and communities are evident in schools throughout the borough. However, in order to maintain this positive atmosphere, it is necessary for Camden's schools and the Council to treat all incidents of bullying, harassment and discriminatory behaviour – such as racism, sexism and homophobia – extremely seriously. Parents and carers are asked to help by reporting any incidents of this kind to the headteacher, and by supporting the school's work in dealing with these issues.



## Useful contacts for information and advice

### Department for Education

Piccadilly Gate  
Store Street  
Manchester M1 2WD  
Tel: **0370 000 2288**  
Website: [gov.uk/dfe](http://gov.uk/dfe)

### Ofsted

Piccadilly Gate  
Store Street  
Manchester M1 2WD  
Tel: **0300 123 1231**  
Website: [enquiries@ofsted.gov.uk](mailto:enquiries@ofsted.gov.uk)

### Advisory Centre for Education (ACE)

72 Durnsford Rd  
London N11 2EJ  
Telephone: **020 8888 3377**  
Email: [enquiries@ace-ed.org.uk](mailto:enquiries@ace-ed.org.uk)

### Independent Schools Council

First Floor  
27 Queen Anne's Gate  
London SW1H 9BU  
**020 7766 7070**  
Website: [isc.co.uk](http://isc.co.uk)

### Local Government Ombudsman

PO Box 4771  
Coventry  
CV4 0EH  
Tel: **0300 061 0614**  
or text 'call back' to **0762 481 1595**  
Website: [lgo.org.uk](http://lgo.org.uk)

### The Office of the Schools Adjudicator

Bishopsgate House, Feethams  
Darlington DL1 5QE  
Telephone: **01325 340 402**  
Email: [osa.team@osa.gsi.gov.uk](mailto:osa.team@osa.gsi.gov.uk)

## Useful websites

[camden.gov.uk](http://camden.gov.uk)

[camden.gov.uk/admissions](http://camden.gov.uk/admissions)

[www.eadmissions.org.uk](http://www.eadmissions.org.uk) to apply online

[gov.uk/dfe](http://gov.uk/dfe) contains advice for parents on matters relating to schools

[streetmap.co.uk](http://streetmap.co.uk) and  
[schoolsfinder.direct.gov.uk](http://schoolsfinder.direct.gov.uk) for approximate home to school measurements

## Neighbouring admission authorities

**Note: You can apply to schools in other authorities on your Camden application if you live in Camden. See contact details for our nearest boroughs below:**

### Barnet Council

Website: [barnet.gov.uk](http://barnet.gov.uk)  
Email: [school.admissions@barnet.gov.uk](mailto:school.admissions@barnet.gov.uk)  
Tel: **020 8359 7651**

### Brent Council

Website: [brent.gov.uk](http://brent.gov.uk)  
Email: [school.admissions@brent.gov.uk](mailto:school.admissions@brent.gov.uk)  
Tel: **020 8937 3110**

### Hackney Learning Trust

Website: [www.learningtrust.co.uk](http://www.learningtrust.co.uk)  
Email: [reception.class@learningtrust.co.uk](mailto:reception.class@learningtrust.co.uk)  
Tel: **020 8820 7245** or **020 8820 7402**

### Haringey Council

Website: [haringey.gov.uk](http://haringey.gov.uk)  
Email: [schooladmissions@haringey.gov.uk](mailto:schooladmissions@haringey.gov.uk)  
Tel: **020 8489 1000**

### Islington Council

Website: [islington.gov.uk](http://islington.gov.uk)  
Email: [admissions@islington.gov.uk](mailto:admissions@islington.gov.uk)  
Tel: **020 7527 5515**

### Westminster Council

Website: [westminster.gov.uk](http://westminster.gov.uk)  
Email: [schooladmissions@westminster.gov.uk](mailto:schooladmissions@westminster.gov.uk)  
Tel: **020 7745 6433**

# Section 1: Overview for admissions to reception classes

## Where and how do I apply?

Camden Council co-ordinates primary reception admissions for community, voluntary aided schools, academies and free schools.

- To apply for a reception class place for the 2016-17 school year, your child must be born between 1 September 2011 and 31 August 2012.
- The deadline for applications is **15 January 2016**. If you miss this date, your child is unlikely to receive an offer until **after** the first round of offers in April.
- Apply to Camden admissions if the address you live at is in Camden, but the school can be in any borough.
- If your address is not in Camden, apply to the local authority for your area.
- You can name up to six schools in your preferences. We recommend that you use all your six preferences.
- You can apply for a place at any community school, voluntary aided school, academy or free school (for voluntary aided, free schools and academies, please check that school's information to see if you need to send an additional form directly to the school).
- We cannot offer places at independent (private) schools. You must apply directly to the school.
- Camden shares information about offers of school places with other councils. If your child has received an offer of a school place from more than one council, we will ask you to decide which one to accept before the place can be confirmed.

## How it works

1. You can name up to six primary schools. These should be listed in order of preference on the application, so put your first preference at the top of your list. You should apply on one application form, to the local authority in which you live, regardless of where the schools are that you wish your child to attend. We advise you to use all your six choices – this won't disadvantage you as offers will always be made for the highest preference available.
2. You can apply online at [www.eadmissions.org.uk](http://www.eadmissions.org.uk) (see also page 12).
3. Each preference will be considered equally. If a school receives more applications than places available, then the admission authority for that school will assess each applicant under its published admission criteria to determine which pupils will be offered the available places.
4. Where a child is eligible to be offered more than one school, the local authority will hold the offer for the school that was listed higher on the application and release all other lower preferences.
5. There is no guarantee that you will be offered a place at one of the schools you apply for. The admission authority for each school will use its own published admissions criteria to decide how places will be offered. You should look at these criteria carefully in order to decide how likely it is that your child will be offered a place.
6. If you are a Camden resident and are not eligible for an offer at any of your preferred schools in the first instance, then Camden Council will offer your child a place at a Camden school which has a vacancy.



7. Accepting an offer of a school place does not prevent you from joining the list for a more preferred school. Places are offered in accordance with each school's admissions criteria. You will not gain or lose any priority on the list by turning down an offer elsewhere.

8. Parents and carers will be notified of the result of their application on **18 April 2016**.

## What does the law require?

### Of parents:

It is the duty of the parent of every child aged five to 16 to ensure the child receives efficient, full-time education, suitable to his or her age, ability or aptitude (and to any special need), either by regular attendance at school or otherwise. (Section 7 of the 1996 Education Act)

### Of local authorities:

It is the duty of every local authority to ensure sufficient primary and secondary schools of appropriate character and with necessary equipment are available to provide all pupils in the area with education suitable to their different ages, abilities and aptitudes.



## Starting school timetable

2015	
<b>1 September</b>	Online applications open at <b><a href="http://www.eadmissions.org.uk">www.eadmissions.org.uk</a></b>
<b>18 December</b>	End of term.

2016	
<b>4 January</b>	First day of spring term.
<b>15 January</b>	Closing date for applications and changes to preferences.
<b>15 - 19 February</b>	Half-term.
<b>18 April</b>	We will write to you to let you know the outcome of your application. Applicants who applied online will be able to pick up their results on the evening of <b>18 April 2016</b> .
<b>2 May</b>	Deadline for the return of the accept / decline reply slip. If you do not return your slip, the place will be withdrawn and offered to another family.
<b>20 May</b>	Closing date for submitting appeals for Camden community schools. Parents appealing to other local authorities or voluntary aided/foundation schools must check the deadline for submitting appeals with those authorities.
<b>Late June, early July</b>	Appeal hearings for Camden community schools.
<b>September</b>	All Camden schools start. See <b><a href="http://camden.gov.uk/schools">camden.gov.uk/schools</a></b> for exact term dates and for voluntary aided primary schools please check with the school.

# Section 2: Applying for schools

## Completing your application

### Does your child have special educational needs?

The primary application process is different for children with statements of special educational needs (SEN) or an education, health and care (EHC) plan. If your child has a statement of SEN or an EHC plan please contact the Camden SEN Team for advice on how to apply for a primary school on **020 7974 6500**.

### Applying for a reception class place for 2016-17

Children born between 1 September 2011 and 31 August 2012, must apply for a reception class place by the closing date: **15 January 2016**.



You need only complete one application form which should then be returned to the borough in which you live. You can list up to six schools in any borough.

Voluntary aided schools require a supplementary form to be filled in (see page 14).

### Transferring between schools and in-year admissions

From September 2015 until the end of this school year, please contact Camden admissions for an application form and to find out about vacancies in local schools if:

- you are new to Camden; and
- you want to apply for a place for your child in Years 1 to 6, or in Reception once that year has started.

Call the admissions team on **020 7974 1625**.

If you live outside Camden, you should contact your local council to obtain their application form, even if you are looking for a place in a Camden school.

If you are thinking of transferring your child from one Camden school to another, you are strongly encouraged to discuss the matter with your child's current class teacher, head of year or headteacher before you take any further action. It is often the case that some children take a while to settle into their new school and asking the school for further help may resolve any difficulties that your child may be experiencing.

For any queries regarding in-year admissions please email **admissions@camden.gov.uk** or call **020 7974 1625**.

## Applying online

You can apply online for your child's primary application at:  
**[www.eadmissions.org.uk](http://www.eadmissions.org.uk)**

You can apply online from **1 September 2015**.

The deadline for online applications is midnight on **15 January 2016**.

You can apply online:

- At home
- At an internet café
- At work
- At a library - the internet at a Camden library is free. Prior booking is recommended.

Completing an online application:

- Is safe, quick and easy to use
- Lets you change your information online rather than completing a new form
- Can be checked and changed at any point until the closing date of midnight on **15 January 2016**
- Has a drop-down school list which will help minimise errors and save you time
- You can print off a paper copy of your completed application if required
- 100% confidentiality and privacy guaranteed with a password protected system
- Won't get lost in the post
- This year those applicants who applied online will be able to pick up their results on the evening of **18 April 2016**.



Below is an example of the e-admissions screen you will see when applying online.

After you have registered, here is the screen where you will input your child's details.

The screenshot shows the Camden e-admissions interface. At the top left is the Camden logo. To the right, contact information is provided: Phone: 020 7974 1625 and Email: [admissions@camden.gov.uk](mailto:admissions@camden.gov.uk). Below this is a teal header for the 'Enter Child's Details' section. The form contains several fields: 'First name' (Stuart), 'Middle name' (empty), 'Last name' (Berwick), 'Date of Birth' (20/11/2011), 'Gender' (Boy), 'Address' (36b-36e Heath Street, London, NW3 6TE) with a 'Change Address if incorrect' button, 'Tick if child is in care of a local authority' (checkbox), 'Select local authority caring for child' (dropdown), 'Tick if child has a statement of special educational needs' (checkbox), 'Select child's current school' (Camden, Carlton Primary School), 'Tick if child's current school is not listed' (checkbox), 'Enter school name & postcode if not found' (text input), 'Tick if child is not currently attending school' (checkbox), 'Relationship to child' (Father), and 'Tick if you have parental responsibility' (checkbox).

Camden	Phone: 020 7974 1625
	Email: <a href="mailto:admissions@camden.gov.uk">admissions@camden.gov.uk</a>
<b>Enter Child's Details</b>	
First name	Stuart
Middle name	
Last name	Berwick
Date of Birth (DD/MM/YYYY)	20 11 2011
Gender (Boy/Girl)	Boy
Address	36b-36e Heath Street London NW3 6TE <a href="#">Change Address if incorrect</a>
<a href="#">Tick if child is in care of a local authority</a>	<input type="checkbox"/>
Select local authority caring for child	
<a href="#">Tick if child has a statement of special educational needs</a>	<input type="checkbox"/>
<a href="#">Select child's current school</a>	Camden Carlton Primary School
<a href="#">Tick if child's current school is not listed</a>	<input type="checkbox"/>
<a href="#">Enter school name &amp; postcode if not found</a>	
<a href="#">Tick if child is not currently attending school</a>	<input type="checkbox"/>
<a href="#">Relationship to child</a>	Father
<a href="#">Tick if you have parental responsibility</a>	<input type="checkbox"/>




## How will I know if my electronic application has been received?

You will be issued with a reference number similar to this: 202-2011-10-E-001234.

Please keep your reference number safe using the box below.

Use this space to record your user name, password and reference number which you have used to make your application.



Username:

Password:

Reference number:

Please ensure that you keep this information safe and secure.

If you have applied online you will be able to view the result of your application on the evening of **18 April 2016**. You will need your username and password in order to access your online application outcome.

We strongly advise parents to apply online - last year 97% of parents did so. If you have problems with this, please talk to your primary school or email [admissions@camden.gov.uk](mailto:admissions@camden.gov.uk)

## Camden's voluntary aided schools - supplementary form needed

Camden's voluntary aided schools (listed below) require a supplementary form to be completed. You need to contact the schools directly for these forms, or download them from the schools' websites, and return them to the school by their specified date. If you add any notes or other relevant information to your online application, please send this to the school as well.

Church of England	Roman Catholic
Christ Church NW1	Our Lady's
Christ Church Hampstead	The Rosary
Emmanuel*	St Aloysius Infants
Hampstead Parochial	St Aloysius Juniors
Holy Trinity and St Silas	St Dominic's
Holy Trinity NW3	St Eugene de Mazenod
Kentish Town	St Joseph's
St Alban's	St Patrick's
St George the Martyr	
St Mary and St Pancras	
St Mary's Kilburn	
St Michael's Camden Town*	
St Paul's*	

\* Please note that these schools offer both faith based places, and community places. A supplementary form is only required for applications for faith based places. If you are unsure, contact the schools who will be able to help.

## Proof of address

There is no need to provide any documents showing proof of address when you submit your application. The Council will check addresses, which may include using a credit reference agency and/or Council records. You may be required to submit additional information at a later date. For example we may ask for:

1. Council tax bill for the year 2015-16 or housing benefit letter; and
2. Utility bill such as gas, electricity, water or landline telephone bill dated within the last three months (mobile telephone bills will not be accepted).
3. Evidence to show you are the same person whose name is on the application form if you sometimes spell your name in a different way or bills are in another person's name.

See **fraudulent applications** below.

Voluntary aided schools may also request further evidence of address. Failure to produce such evidence may lead to the offers of places being withdrawn, even if the place has already been accepted.

## Name of applicant

Please be careful to apply in the name of the parent/carer in whose name, Council tax and bills are registered, using the correct spelling of your full name.

## Change of address

We can only accept changes of address once they have taken place. Notice of planned future arrangements will not be accepted. Notice of an actual change of address should always be provided to the Camden admissions team in writing with appropriate evidence. For a change of address to be taken into account for your admission application, it must have occurred before the closing date of **15 January 2016**.

### Fraudulent applications

Camden Council takes very seriously any attempt to obtain a school place by fraud. All cases are investigated and the use of credit reference agencies has improved detection rates.

**If you know someone who intends to or has used a false address to get a school place, you can report this confidentially to the Camden admissions team on 020 7974 1625 or email [admissions@camden.gov.uk](mailto:admissions@camden.gov.uk)**

You do not need to give your name but please provide as much information as possible so that we can investigate the matter fully.

If we find that a school place was obtained using a false address we will withdraw our offer, even after the child has started school, and give it to the child who was entitled to the place. We consider every school place obtained through deception denies another child their legitimate place.

We will not accept a temporary address if you still have a property that was previously used as a home address, nor will we accept a temporary address used solely or mainly to obtain a school place. You may be asked to supply additional information to explain why you are not able to use your permanent address.



## Changing preferences

If you wish to change your preferences, we must be notified by letter or email before the deadline of **15 January 2016**.

Changes to preferences after this date will not be considered in the first round of offers. If you do not receive an offer of a school place in the first round, or if you turn down an offer of a school place in the first round, you may change your preferences for the next round of offers.

## Late applications

Late applications will only be considered if there are exceptional reasons why the applicant could not apply on time. Reasons for late applications must be included in writing with the application incorporating any appropriate supporting documents/statements. This will be determined at the discretion of the director of children, schools and families.

## Shared custody

If parents live separately, the application must be based on the address at which the child usually lives and from which they travel to and from school. If parents live separately but the child lives equally with both at different addresses, it is the parents' responsibility to agree and make it clear which address will be used and to provide supporting evidence in respect of that address. Only one address can be used and Camden admissions team reserves the right to determine which address will be used in such cases.

### Key points

- Contact the schools you are interested in for a brochure and an application form and to arrange visits.
- Do you meet the admissions criteria for the schools you are interested in?
- Have you completed any supplementary forms if applying for religious (voluntary aided) schools?
- Submit your application before 15 January 2016.

## How to decide which school to apply for

Camden has 43 primary schools, 42 of which have reception classes. All of these schools participate in the co-ordinated application process. Camden has one school for Key Stage 2 only, which is voluntary aided.

- All are mixed gender schools (boys and girls)
- 21 are voluntary aided schools (13 Church of England and eight Roman Catholic Schools), including one RC junior school
- 19 are community schools
- Two are free schools
- One, which opened in King's Cross in September 2015, is an academy.

Many of Camden's primary schools are oversubscribed, meaning that they receive more applications than they have places available.

## Choosing a school

Before deciding which schools to apply for, you should gather as much information about the schools as possible. Read the information in this booklet, get information from elsewhere, e.g. obtain the schools' own information booklets, visit the schools and talk to your child's primary school headteacher. Make sure you are clear which schools (usually voluntary aided schools) require you to complete an additional supplementary form and ensure that this supplementary form is returned to the school on time (see page 14).

You can apply for up to six schools in any borough and these must be listed in order of preference. Please do not include special or independent schools.

## Schools available in Camden – (published admission numbers in brackets)

### Community schools

- Argyle Primary School (60)
- Beckford Primary School (60)
- Brecknock Primary School (60)
- Brookfield Primary School (60)
- Carlton Primary School (60)
- Christopher Hatton Primary School (30)
- Edith Neville Primary School (30)
- Eleanor Palmer Primary School (30)
- Fitzjohn's Primary School (30)
- Fleet Primary School (30)
- Gospel Oak Primary School (60)
- Hawley Primary School (30)
- Kingsgate Primary School (120)
- Netley Primary School (60)
- New End Primary School (60)
- Primrose Hill Primary School (60)
- Rhyl Primary School (60)
- Richard Cobden Primary School (60)
- Torriano Primary School (58)

### Voluntary aided schools

#### Church of England schools

- Christ Church Church of England Primary School (Hampstead) NW3 (27)
- Christ Church Church of England Primary School (Redhill Street) NW1 (30)
- Emmanuel Church of England Primary School (30)
- Hampstead Parochial Church of England Primary School (30)
- Holy Trinity (Trinity Walk) Church of England Primary School NW3 (27)
- Holy Trinity and Saint Silas Church of England Primary School NW1 (30)
- Kentish Town Church of England Primary School (30)
- Saint Alban's Church of England Primary School (30)
- Saint George The Martyr Church of England Primary School (30)
- Saint Mary And Saint Pancras Church of England Primary School (30)
- Saint Mary's Kilburn Church of England Primary School (30)
- Saint Michael's Camden Town Church of England Primary School (30)
- Saint Paul's Church of England Primary School (30)

#### Roman Catholic schools

- Our Lady's Roman Catholic Primary School (30)
- The Rosary Roman Catholic School (45)
- Saint Aloysius Catholic Infant School (60)
- Saint Aloysius Catholic Junior School (60)
- Saint Dominic's Roman Catholic Primary School (45)
- Saint Eugene De Mazenod Roman Catholic School (30)
- Saint Joseph's Roman Catholic Primary School (30)
- Saint Patrick's Catholic Primary School (30)

#### Free schools

- St Luke's Church of England (15)
- Abacus Belsize Primary School (30)

#### Academy

- King's Cross Academy (60)



## Schools outside Camden

You may also apply for schools in other boroughs. You should request a copy of their primary school booklet or view one on that borough's website. You might wish to contact the school directly to request further information and obtain details of visiting arrangements.

## Your school preferences

- Your application allows you to apply for six schools in order of preference. We advise parents to use all six preferences.
- You need to be realistic about the chances of your application being successful. You should remember that most schools receive more applications than they have places available so will not be able to make offers to everyone who applies. When deciding who should receive a place at a school the published admission criteria must be used\*.
- No primary school in Camden has associated feeder nursery schools, so please be aware that just because your child has been attending a particular nursery school, it does not mean they will automatically be given a place at a particular primary school in the borough.
- If you live near the borough boundary you may have a chance of securing a place in a school in the neighbouring authority.

\*To view the criteria for admission to a Camden community school, see page 27. For voluntary aided schools please refer to the schools' own pages within this booklet, on pages 30 to 65, contact the schools or visit [camden.gov.uk/admissions](http://camden.gov.uk/admissions)

## Cut off distances

Most families (if there are no special factors or siblings) will be applying under the distance criterion when applying for a place at Camden's community schools. For clarification on whether your application will be considered under the distance criterion please use the flow chart on page 29.

In order to determine whether an offer will be likely under the distance criterion you will need to find out how far you live from the school (please use one of the useful websites below). You can then compare your distance with those pupils that were offered in previous years (see page 70). These distances are for guidance only and can change each year, depending on the number of applicants. Parents seeking information on distance for appeals should email [admissions@camden.gov.uk](mailto:admissions@camden.gov.uk) or call **020 7974 1625**.

Camden admissions team uses the Council's corporate Land and Property Gazeteer to validate Camden pupil and school addresses which are used to calculate the distance between home and school. Our gazeteer conforms to British Standard BS7666 spatial datasets for geographical referencing. The distance from home to school for non-Camden pupils is calculated using the address co-ordinates that are validated by their responsible local authority before they are sent to us.

## Useful websites

[camden.gov.uk/admissions](http://camden.gov.uk/admissions) - Find out how far you live from a Camden school  
[gov.uk/dfe](http://gov.uk/dfe) - for league table results

[ofsted.gov.uk](http://ofsted.gov.uk) - to view the schools' inspection reports

[streetmap.co.uk](http://streetmap.co.uk) - to locate nearest schools and approximate distance figures

[schoolsfinder.direct.gov.uk](http://schoolsfinder.direct.gov.uk) - to locate nearest schools and approximate distance figures

[journeyplanner.tfl.gov.uk](http://journeyplanner.tfl.gov.uk) - to plan a possible school journey

If you are using this information in an appeal, please obtain written confirmation from the admissions team on **020 7974 1625**. See also appeals section on page 67.

## Mythbusters

Some parents and carers make decisions based on incorrect information they have heard. Here are some common reasons for not being offered a place at one of their preferred schools.

### **Myth – listing one school will mean the Council will have to offer that school.**

If we apply the admissions arrangements and your child cannot be offered a place because you live too far away, we will not be able to offer a place at the school. Last year, of the pupils that were allocated a school they did not list, 27% had only listed one preference.

### **Myth - if you live nearer to the school than the last child offered under the distance criterion last year you will be guaranteed a place.**

Although the information on page 70 can give you an idea of how likely it is that you will be offered a place at your preferred school, the 'last distance' will change every year. We can never guarantee any child will be offered a place at any school.

### **Myth - children in my road go to the school so my child will too.**

The number of pupils offered under each criterion at each school can change every year so just because you know pupils living near you that go to a certain school, it does not mean that your child will be offered a place there.

### **Myth - listing the same school six times will improve my chances of being offered the school.**

Your child can only be considered once for a school and any duplicated preferences will be deleted.

### **Myth - if I have a sibling enrolled at a faith school I will get a higher priority.**

This may not always be the case, as some faith schools rank regular worship at a particular church above siblings. Please check the admissions criteria for your preferred faith school.

### **Myth - The oversubscription criteria doesn't change.**

Each year the Council consults on the admissions criteria for each school and the oversubscription criteria can vary from year to year.

### **Myth - it does not matter if my form is late.**

If you apply after 15 January 2014, we will look at your application after all those who have applied on time and it is very unlikely that you will be offered one of your preferred schools.

### **Myth - if I get a place in the nursery I will get a place in the reception class.**

There is no guarantee that this will happen as not every parent who applies for a reception place also has a nursery place.

### **Myth - if I work close to a school my child will get a place.**

Where a parent works is irrelevant to the admissions process and does not affect your chances of getting a place at a particular school.

## Frequently asked questions

### Q How do I decide which is the best school for my child?

A While schools' websites provide a lot of information, including the school's prospectus, it is important to visit the schools before you choose. Speak to parents who already have a child at the school and read the Ofsted report at [ofsted.gov.uk](http://ofsted.gov.uk). The DfE (Department for Education) also produces performance tables that can be found at [gov.uk/dfes](http://gov.uk/dfes)

### Q If my child attends the nursery class at a school does this mean I will automatically get a place in the reception class?

A No. Attendance at any nursery does **not** guarantee admission to the reception class at any school. Children who attend nursery education will still need to apply for a reception class place.

### Q What if my child has a medical condition?

A Where a parent states a preference for a particular school because of the medical, social or special educational needs of their child, they must demonstrate how this school meets the child's special circumstances. Along with your application you should submit supporting evidence which sets out the particular reasons why the school is the most suitable and the difficulties that could be caused if your child has to attend another school. This will normally be in the form of a letter from a suitably qualified professional, like a doctor, consultant, or social worker. It must not be dated more than six months earlier than the date of applying. Please note that hospital appointment letters cannot be accepted as proof. If you or your child has mobility issues, that are agreed by the admissions authority under social or medical criteria, then you will be expected to apply for place at your nearest school, unless there is a specific reason this school cannot meet your child's needs. Please see the individual school's oversubscription criteria for further information on how this criterion will be applied.

### Q What if my child has an education, health and care plan?

A Children who have a statement or an education, health and care plan will need to contact the SEN team on **020 7974 6500** in order to apply for a school. See also page 77 of this booklet.

### Q Will schools be told my order of preference?

A No, schools will not be told your order of preference. Councils will not pass on details of where the school was ranked and no school will be told about other schools a parent has applied to.

### Q Do I live in the catchment area of the schools I have named?

A The primary schools in Camden do not have 'catchment' areas. The area where children live who have previously been offered a place at a particular school can vary from year to year depending on the applications received. This is why in one year a child may be admitted to a school, but the next year a child living on the same road may be too far away to be offered a place.

**Q I want to apply for some schools in Camden and some schools in other boroughs. How should I do this?**

**A** You will only need to complete a primary application form from the borough where you live, naming all the primary schools you want to apply for. However, if you are applying for a voluntary aided school, you should check with the school whether they have a supplementary form to complete as well.

**Q I live in Camden, but I am not going to apply for any of the Camden schools. Do I still fill in the Camden primary application form?**

**A** Yes, you need to complete a Camden application form. This information will be passed to the relevant borough. Remember, when applying to a school in another borough you must check the admission arrangements with the appropriate school or local authority admissions team.

**Q If I apply to a school in another borough, will their residents have priority over me?**

**A** No. A decision in the High Court called the 'Greenwich Judgement' means that a local authority cannot give preference to its own residents. Admission decisions have to be made according to the published arrangements, which cannot include the borough of residence.

Camden Council cannot and does not discriminate between applicants who live in the borough and those who do not.

If you are applying to a school in another borough you need to check the criteria with the appropriate admissions authority.

**Q I know someone who has used a false address to get a school place. What should I do?**

**A** You can report this to the Council's school admissions team confidentially on **020 7974 1625**. You do not need to tell us who you are. Please give us as much information as possible so that we can investigate the matter fully.

If we find that a school place was obtained using a false address we will withdraw our offer and give it to the child who was entitled to the place. We may consider withdrawing the place even after the child has started school.

We consider every school place obtained through deception is unfair as other children have been denied their legitimate place.

Camden screens all applications through a credit reference check and, where there are concerns about an application, we may ask for additional information to prove the validity of the application.

**Q We have a temporary address - which address shall I use for my child when applying for school admission?**

**A** Families may need to move because their house is uninhabitable or because of family circumstances. However, we will not accept a temporary address if you still have a property that was previously used as a home address, nor will we accept a temporary address used solely or mainly to obtain a school place. You may be asked to supply additional information to explain why you are not able to use your permanent address.

### **Q What if I change address during the admissions process?**

**A** Please notify us immediately if you change address. If you move into or out of Camden after **15 January 2016** and have completed an application in your previous borough, you will need to contact both councils with details of your new address.

Your child's permanent home address on the closing date of **15 January 2016** will be used to determine the distance to the school of your preference. If you move address after **15 January 2016** and are offered a place, you will be entitled to retain that place if you wish.

However, changes to preferences and the order of preferences will only be accepted up until the closing date of **15 January 2016**. After this date any changes you make to your preferences will not be added to your application until after the offer day of **18 April 2016**.

### **Q What if I wish to change my list of preferences after I have submitted my application?**

**A** Changes to preferences and the order of preferences will only be accepted up until the closing date of **15 January 2016**. After this date any changes you make to your preferences will not be added to your application without a genuine reason for doing so, for example, if you have recently moved address. Proof will be required. All other changes will not be considered until after the offer day on **18 April 2016**.

### **Q What if I miss the deadline for submitting my application?**

**A** The closing date for applications is **15 January 2016**. Forms received after this date will only be considered as on time if they are late for a good reason determined by the Council. You should provide supporting information stating the reasons why the application is late.

### **Q Once my application form has been completed and sent to Camden, can I change my preferences?**

**A** Yes you can, but you must do so in writing. The Council's admissions team must receive this request by **15 January 2016**. Changes cannot be made after this deadline.

### **Q What happens if I move during the primary application process? How will my application be affected?**

**A** Camden Council cannot under any circumstances accept a planned future address. An application will only be considered on the basis of the address where the child lives at the time of the application.

If you move before **15 January 2016** and the move is notified to the Camden admissions team in writing by this date, the application will be considered on the basis of the new address. If you move or inform the Camden admissions team after **15 January 2016**, the change of address cannot be taken into account by the Council when it determines the result of your application.

However, if you move after **15 January 2016** it may lead to a change in the position on the waiting list, if applicable.



### **Q What if I am not satisfied with the school offered?**

**A** You should accept the school offer to ensure your child has a place. Your child's name will be placed on a waiting list for the higher preference school(s) listed on your application. These waiting lists are not operated on a first come, first served basis. The place on the waiting list and whether a place is offered if another child withdraws is determined by the school's admission criteria. If a space becomes available, all children on the waiting list are considered.

The waiting lists are kept in criteria order. The length of time spent on the waiting list will not give priority over other applicants – it is possible for a child to go down as well as up the list. Being on a waiting list is no guarantee of a place at a school.

### **Q What happens if my child does not have a school place?**

**A** Of course it is disappointing if your child is not offered a place at one of your preferred schools. In this event we will attempt to offer you the nearest school that has a vacancy, if you are a Camden resident.

We will continue to identify vacancies as they become available and will offer these to the child who is highest on the waiting list at that date. If a school has no waiting list the place will be offered to a child without a place. It is therefore important for parents and carers to make all six preferences known and remain on waiting lists for all higher preference schools. After the offer date, you will be given an opportunity to be placed on additional waiting lists. Email [admissions@camden.gov.uk](mailto:admissions@camden.gov.uk) or call **020 7974 1625** for further information and advice about which schools have vacancies and/or short waiting lists.

In order to increase the chance of being offered a school of your choice for your child it is important to make accurate and realistic preferences, based on the school's published admissions criteria. Camden admissions team will continue to send you information on schools where there are possible places and you have the right to appeal against any decision refusing your child a place at any of your preferred schools.

Parents have a legal duty to ensure their children receive full time education suitable to their age, ability or aptitude. In addition Camden Council has a legal duty to ensure that all children living within the borough have a primary school place.

When a child is approaching statutory school age, the admissions team will pass the names of all the children without a school place to the school inclusion team who will work with parents/carers to ensure their child is receiving education.

### **Q My child has not been accepted at any or some of the schools that I have applied for. Can I appeal?**

**A** You can appeal against any or all of the decisions to refuse your child a place. Camden admissions team will also send residents a list of schools which may have vacancies. Even if you decide to appeal, it would be sensible to secure a place at an alternative school with vacancies in case your appeal is unsuccessful. If the appeal panel upholds your appeal, then you can simply withdraw from the alternative school. Accepting a lower preference school will have no bearing on the outcome of an appeal.

**Q Are places reserved for successful appeals?**

**A** No. Any places arising before the appeals have been heard will be filled from the waiting list. If an appeal is successful, the school must offer a place to the child concerned. This means that the number of children to be admitted to the school will exceed the published admission number. No further places will be offered until the number of children falls below this figure again.

**Q My child's name is on a waiting list. Why should I apply for another school?**

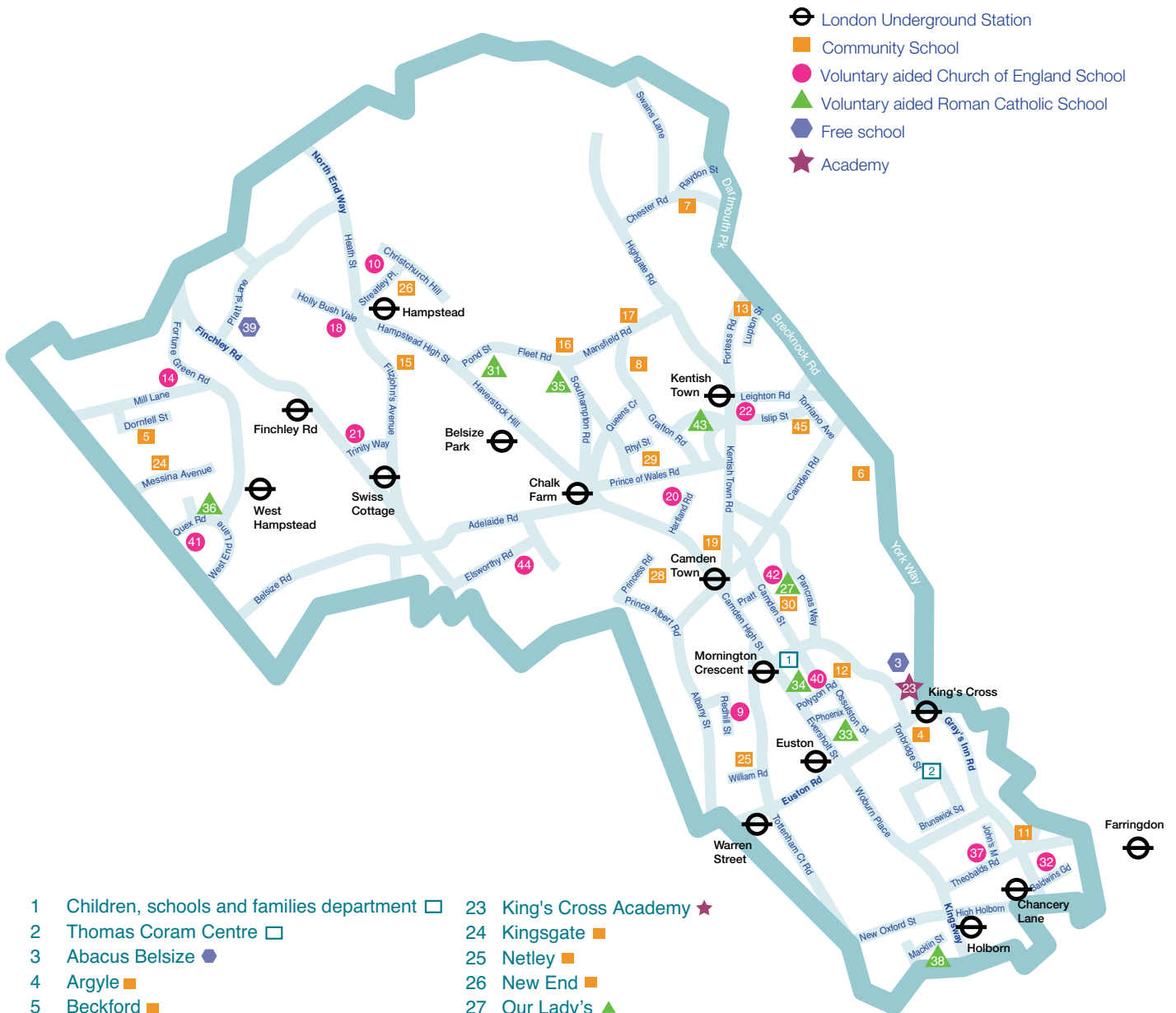
**A** Being on a waiting list is not a guarantee of a place. Even if your child is first on the list, you should still apply for alternative schools. If you delay, there will be far fewer places available later in the process. If you are offered a place at your preferred schools, you can withdraw from the alternative school.

**Q Can the offer of a school place be withdrawn once it has been made to me?**

**A** Once the Council has made an offer of a school place, it can only be lawfully withdrawn in very limited circumstances. For instance, if the place was offered on the basis of fraudulent or intentionally misleading information, even if a child has started school, the place may be withdrawn up until the end of the first term. A place may also be withdrawn where a parent has not responded to an offer within the specified timescale. Where a place is withdrawn, the application would then be considered afresh, and you would have the right of appeal.



# Section 3: Admissions criteria and Camden schools



- |   |                               |
|---|-------------------------------|
| 1 Children, schools and families department □                     | 23 King's Cross Academy ★     |
| 2 Thomas Coram Centre □   | 24 Kingsgate ■                |
| 3 Abacus Belsize ●  | 25 Netley ■                   |
| 4 Argyle ■  | 26 New End ■                  |
| 5 Beckford ■  | 27 Our Lady's ▲               |
| 6 Brecknock ■   | 28 Primrose Hill ■            |
| 7 Brookfield ■  | 29 Rhyl ■                     |
| 8 Carlton ■   | 30 Richard Cobden ■           |
| 9 Christ Church NW1 ●   | 31 The Rosary ▲               |
| 10 Christ Church NW3 ●  | 32 St Alban's ●               |
| 11 Christopher Hatton ■   | 33 St Aloysius Infant ▲       |
| 12 Edith Neville ■  | 34 St Aloysius Junior ▲       |
| 13 Eleanor Palmer ■   | 35 St Dominic's ▲             |
| 14 Emmanuel ●   | 36 St Eugene de Mazenod ▲     |
| 15 Fitzjohn's ■   | 37 St George the Martyr ●     |
| 16 Fleet ■  | 38 St Joseph's ▲              |
| 17 Gospel Oak ■   | 39 St Luke's ●                |
| 18 Hampstead Parochial ●  | 40 St Mary's & St Pancras ●   |
| 19 Hawley Primary ■<br>(moving to Hawley Wharf in September 2016) | 41 St Mary's Kilburn ●        |
| 20 Holy Trinity & St Silas ●                                      | 42 St Michael's Camden Town ● |
| 21 Holy Trinity NW3 ●   | 43 St Patrick's ▲             |
| 22 Kentish Town ●   | 44 St Paul's ●                |
|   | 45 Torriano Primary ■         |

## Camden community schools:

- Argyle Primary School
- Beckford Primary School
- Brecknock Primary School
- Brookfield Primary School
- Carlton Primary School
- Christopher Hatton Primary School
- Edith Neville Primary School
- Eleanor Palmer Primary School
- Fitzjohn's Primary School
- Fleet Primary School
- Gospel Oak Primary School
- Hawley Primary School
- Kingsgate Primary School
- Netley Primary School
- New End Primary School
- Primrose Hill Primary School
- Rhyl Primary School
- Richard Cobden Primary School
- Torriano Primary School

Below is the order in which Camden Council determines places for its community schools when there are more applications than places available.

**Attendance at any nursery does not guarantee admission to the reception class at any school. Children who attend nursery at a school will still need to apply for a reception class place.**

## Community school admissions criteria

Reception places will be offered to children on a full-time basis. In the event of oversubscription, places will be offered in descending order to:

a) Looked-after children (children in public care) or a child who was previously looked-after but immediately after being looked-after became subject to an adoption, child arrangement or special guardianship order (see note 1 on page 28).

b) Children with a sibling\* (brother or sister) at the same school who will still be on roll when they join.

\* Sibling refers to brother or sister, half brother or sister, adopted brother or sister, step brother or sister, or the child of the parent/carer's partner where the child for whom the place is sought is living in the same family unit at the same address as the sibling. A sibling relation does not apply when the older child will leave before the younger one starts.

c) Children whom the Council accepts have an exceptional medical or social need for a place at the school. There will have to be a clear link between the child's exceptional need and the school in question. Parents/carers will need to submit a case supported by appropriate professional evidence from a doctor, social worker, or similar professional. That evidence will need to support the link between the need and the particular school being applied for. Contact the admissions team for further guidance.

d) Other children, with priority given to those living closest to the school measured 'as the crow flies' measured from the home address to the centre of the school. The address given must be the one in which the child normally lives. Distances are measured using a computerised mapping system.

Please note that, following consultation, it has been determined that the most appropriate arrangement for Kingsgate Primary School is to have a mid-way measuring point between both school sites for admissions purposes.

## Notes:

1. In order to be given highest priority for admission, a child has to fall within the definition of 'looked-after' in section 22 (1) of the Children Act 1989. As this act applies to England and Wales, a child has to be looked-after by an English or Welsh local authority in order to be given highest priority.

Paragraph 1.7 of the School Admissions Code gives equal highest priority to 'previously looked-after children'. Given the definition of a looked-after child, a child will have to have been looked-after by an English or Welsh local authority in order to be considered previously looked-after. Under paragraph 1.7 of the Code, a child has to have been looked after immediately before they were adopted or became a subject to a child arrangement or special guardianship order. Proof of looked-after status will be requested from the relevant local authority.

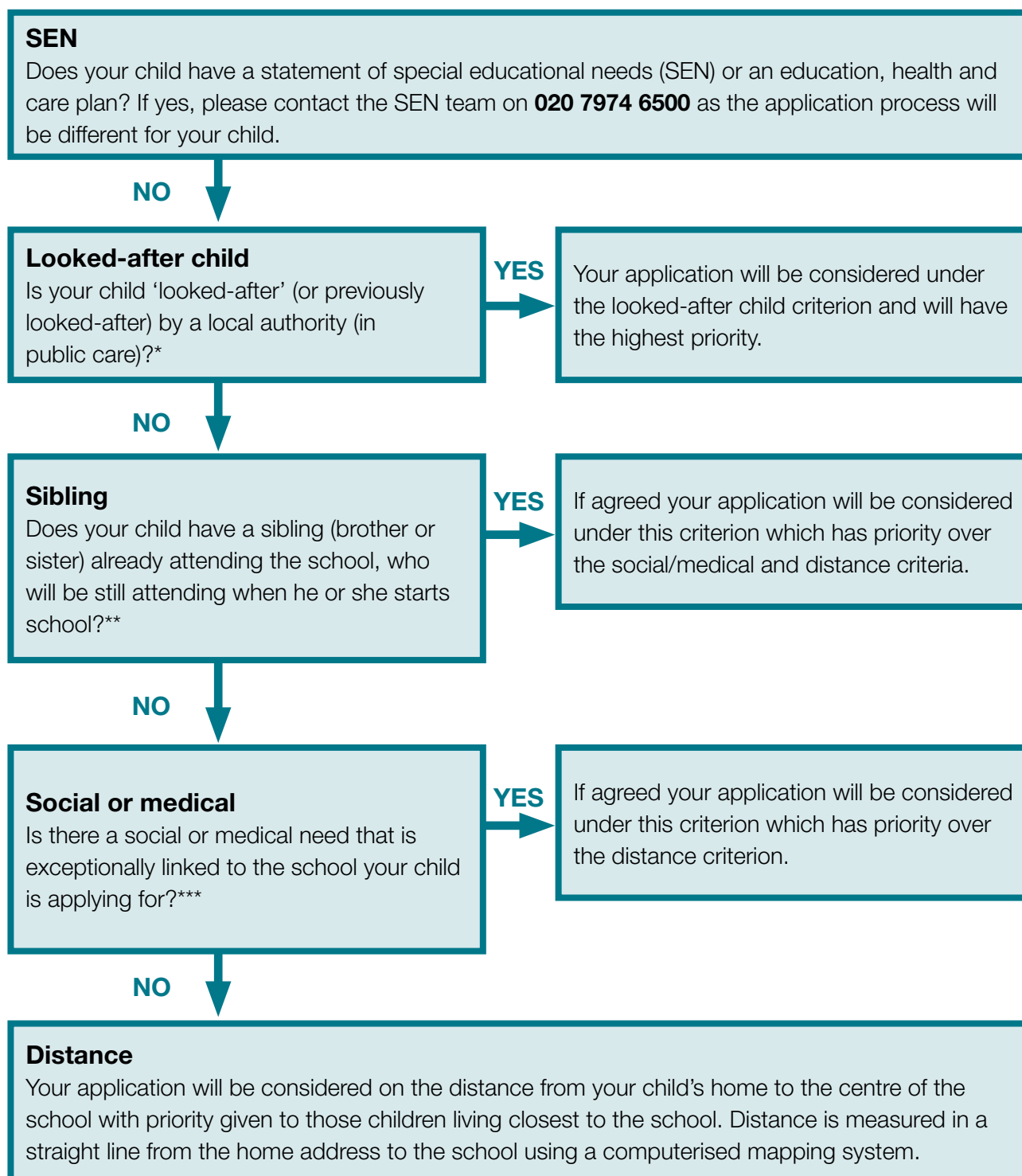
2. Any offer of a place on the grounds of proximity is conditional on the child being resident at the address provided at the closing date for application. A business address, a childminder's address, or any address other than the child's home will not be accepted. Proof of address will be sought and may be the subject of further investigation.
3. Criterion d) will be used as a 'tie-breaker' should any of the first three criteria be oversubscribed.
4. Children with a statement of special educational need that specifies the school as the placement school will be allocated a place through a separate procedure, in accordance with the special educational needs code of practice.
5. The Council reserves the right to seek verification of the information parents have given on the application form and to withdraw places if false information has been given.
6. Multiple births: Key Stage 1 – If only one place is available at the school and the next child who qualifies for a place is one of multiple births the school will go over their published admission numbers to support the family. These children will be 'excepted pupils' under the Key Stage 1 class size legislation.
7. Multiple births: Key Stage 2 – If only one place is available at the school and the next child who qualifies for a place is one of multiple births we will go over their published admission number in order to support the family.
8. Where one child of multiple birth has a statement of special educational needs or education, health and care plan that names a specific school, the other children will be treated as having a sibling link for that academic year.
9. In the minority of cases when applicants' distance measurements are exactly the same, in blocks of flats for instance, the computer system will randomly order the priority of applicants.
10. Some schools give priority to children with significant social or medical needs. If you state a preference for a particular school because of medical or social needs you must explain how this school meets your child's special circumstances. Along with your application, you should submit supporting evidence which sets out the particular reasons why that school is the most suitable, and the difficulties that could be caused if they were to attend another school. This will normally be in the form of a letter from a suitably qualified professional, such as a doctor or social worker for example. Please note that hospital appointment letters cannot be accepted as proof. If you or your child has mobility issues then you will be expected to accept a place at your nearest community school.

Each application under this criterion will be considered by the social medical advisory panel, which includes a consultant paediatrician, admissions officer, senior social worker, educational psychologist and school inclusion officer.

For further information on deferred entry and requests for admission to primary school outside a child's age group, see section 6, page 82 of this guide.



## Camden community schools only



\* Proof of 'looked-after' status will be requested from the relevant local authority. This also applies to a child who was previously looked-after but immediately after being looked-after became subject to an adoption, child arrangement or special guardianship order.

\*\* Sibling refers to brother or sister, half brother or sister, adopted brother or sister, step brother or sister, or the child of the parent/carer's partner where the child for whom the place is sought is living in the same family unit at the same address as the sibling. A sibling relation does not apply when the older child will leave before the younger one starts.

\*\*\* Independent professional evidence must be included with the application. See page 21 for further details.



# Camden primary schools



**Note:** Details of admissions criteria for community schools are on pages 27 to 29 of this booklet. Full admissions criteria for voluntary aided schools are available from the individual schools or at [camden.gov.uk/admissions](http://camden.gov.uk/admissions)

What appears on the following pages, p31 to 65, is a summary for each school only.

Note: Where 'looked-after children' are referred to, this also includes previously looked-after children – that is, children who were looked-after, but ceased to be so because they were adopted or became subject to a child arrangement or special guardianship order.

 **Community schools**

 **Church of England**

 **Roman Catholic**

 **Free Schools**

 **Academy**



### Abacus Belsize Primary School

Abacus Belsize Primary School is a 'free school' (see definition, page 4), which opened in September 2013 in partnership with CfBT Schools Trust. The school is currently in temporary accommodation in the Jubilee Waterside Centre and plans to move to the old Hampstead Police Station, in Rosslyn Hill, in 2017. This will be its permanent site where the school will continue to grow. Abacus currently has Year 2, Year 1 and Reception classes, with up to 30 children in each.

Abacus Belsize Primary School is a small, secular and inclusive school, serving a socially diverse community. Built by the community, and for the community, we welcome parents, carers and community members and encourage them to take an active part in our children's education.

Welcoming children of all abilities and from all backgrounds, we provide a positive, creative and multi-sensory learning environment to nurture and inspire each child and maximise their individual

talents, curiosity and ability to think.

We believe all children are entitled to enjoy their childhood and live it actively. They must be valued for their individuality, culture and heritage. At Abacus they will be encouraged to develop their full potential in a stimulating and caring environment.

Our curriculum is balanced and ambitious, with a strong focus on English and maths and incorporating Mandarin and outdoor learning. For more details see the curriculum page on our website.

Our overall aim is to make a major contribution to the development of children as individuals and as members of the community. At Abacus we encourage each child to be a self-confident, inquiring, tolerant, positive young person, with a well-rounded character and independent mind, who respects the differences of others and who is able to communicate confidently and articulately. By the time children leave Abacus, we want each of

**Type of school:** Free school

**Headteacher:** Vicki Briody

**Address:**

Jubilee Waterside Centre,  
105 Camley Street, N1C 4PF

**Tel:** 020 7209 7904

**Email:**

[admin@abacus-cfbt.org](mailto:admin@abacus-cfbt.org)

**Website:** [abacus-cfbt.org](http://abacus-cfbt.org)

**Approved entry 2016-17:** 30,

September intake only

**No nursery provision.**



them to have a true sense of self-worth that will enable them to stand up for themselves and for a purpose greater than themselves.

### **Admissions**

Apply online at **www.eadmissions.org.uk** or, if you are having problems doing so, contact the admissions team on **020 7974 1625**.

### **Abacus Belsize Primary School admission criteria for 2016-17**

The school will admit 30 pupils to its reception class in September 2016.

If there are more applicants than places, children with a statement of special educational needs or an education, health and care plan which names the school will be allocated a place above all other applicants. Otherwise, where the school is oversubscribed, places will be offered according to the following criteria:

1. Looked-after children or children who were previously looked-after but immediately after became subject of an adoption, child arrangement or special guardianship order.
2. Children of staff at the school, where either that member of staff has been employed at the school for two or more years and / or they have been recruited to a post where there is a skill shortage.
3. Siblings of children who will be at the school when the applicant will enter the school and live within the school's catchment area, selected by random allocation.
4. Siblings of Foundation Children who will continue to be at the school when the

applicant will enter the school, who live outside the school's catchment area, selected by random allocation.

5. Children living within the catchment area, selected by random allocation.
6. Siblings of children who are not Foundation Children, who will be at the school at the time the applicant enters the school and who live outside the school's catchment area, by random allocation.
7. Children living outside the catchment area, who live closest to the school, measured by a straight line from the centre of the school to the centre of the child's home. Distance is measured using Camden's computerised mapping system.

### **Definitions**

Random allocation will be supervised by the drawing of lots, carried out by at least two officers at the CfBT Schools Trust, who are independent of the school.

A Foundation Child is a child who attended Abacus Belsize Primary School in its first two years of operation, from 2013-14 to 2014-15.

Catchment area constitutes all the roads between Adelaide Road, Finchley Road, Lyndhurst Road, Fitzjohn's Avenue up to Netherhall Gardens and Haverstock Hill (and also incorporating the Aspen Grove estates, Downside Crescent and Lawn Road to the corner of Garnett Road, Garnett Road and Upper Park Road).

**For more details visit the school's website.**





## Argyle Primary School

Argyle is a school where children and families feel they belong, are welcomed and listened to and where we put our values into action. We have a dynamic and creative approach to teaching and learning which challenges and enables children to be the best they can across a wide and varied curriculum.

Our school is a four-storey Victorian building behind Camden Town Hall, close to King's Cross Station. The rooms are spacious and very well-resourced. We have a dedicated early years area, a music and performing arts suite and a computer suite – as well as computers and interactive whiteboards in every classroom. There are three outdoor play areas for the children in addition to a wildlife garden, an organic

vegetable garden, two quiet gardens and games areas.

### Admissions

Parents apply directly to the school for nursery places. When you decide to put your child's name down for a place at Argyle we would like you to make a visit and meet us. The school office team will be pleased to arrange this with you. When you accept a place at our nursery, staff will organise a home visit to begin our partnership working with you and your child.

For reception places, apply online at **[www.eadmissions.org.uk](http://www.eadmissions.org.uk)** or, if you are having problems doing so, contact the admissions team on **020 7974 1625**.

**Type of school:** Community  
**Headteacher:** Jemima Wade

**Address:**  
Tonbridge Street, WC1H 9EG  
**Tel:** 020 7837 4590

**Email:**  
[admin@argyle.camden.sch.uk](mailto:admin@argyle.camden.sch.uk)

**Website:** [argyle.camden.sch.uk](http://argyle.camden.sch.uk)

**Approved entry 2016-17:** 60  
**Number of full-time nursery places:** 39.



## Beckford Primary School

At Beckford our motto is 'together, we achieve'. The almost 460 children at our school are a true representation of the community - they come from many different countries, speak a large number of languages and all learn in their own way. This diversity is a major strength of our school. The children at Beckford exemplify our school motto and show time and again that they care for and support each other.

Our aim at Beckford is to ensure we work with parents to give every child at the school the very best start in their education, as well as supporting them to become responsible citizens in a rapidly changing and challenging world. In July 2012 Ofsted inspectors said Beckford is "a good school where pupils achieve well because of good teaching".

### Admissions

Apply online at **[www.eadmissions.org.uk](http://www.eadmissions.org.uk)** or, if you are having problems doing so, contact the admissions team on **020 7974 1625**.

**Type of school:** Community  
**Headteacher:** Samantha Smith  
**Address:** Dornfell Street, NW6 1QL  
**Tel:** 020 7435 8646

**Email:**  
[admin@beckford.camden.sch.uk](mailto:admin@beckford.camden.sch.uk)  
**Website:** [beckford.camden.sch.uk](http://beckford.camden.sch.uk)

**Approved entry 2016-17:**  
60, September intake only  
**Number of full-time nursery places:** 39.



**Type of school:** Community  
**Headteacher:** Marianne Porter  
**Address:** Cliff Villas, NW1 9AL  
**Tel:** 020 7485 6334  
**Email:**  
admin@brecknock.camden.sch.uk  
**Website:** brecknock.camden.sch.uk  
**Approved entry 2016-17:**  
60, September intake only  
**Number of nursery places:** 50.

## Brecknock Primary School

We are a thriving two-form entry community school housed in a spacious three-storey building with three well-equipped play areas, including a roof playground with views across London. We are situated in the Camden Square area and we cater for children from nursery age to Year 6.

Brecknock has impressive ICT provision, including an Apple Mac digital music suite, which other Camden schools can access, and a fully-equipped ICT suite for classes as well as portable devices.

We offer a rich, creative curriculum to our children and encourage them to develop a love of learning and an understanding of the world around them, as well as high expectations, academic standards and progress.

### Admissions

Apply online at **www.eadmissions.org.uk** or, if you are having problems doing so, contact the admissions team on **020 7974 1625**.



**Type of school:** Community  
**Headteacher:** Mark Stubbings  
**Address:** Chester Road, N19 5DH  
**Tel:** 020 7272 9627  
**Email:**  
admin@brookfield.camden.sch.uk  
**Website:** brookfield.camden.sch.uk  
**Approved entry 2016-17:**  
60, September intake only  
**Nursery places:** mix of full and part-time.

## Brookfield Primary School

Brookfield is a community school for children aged five to 11, with a nursery attached. We are based in the north of the borough, close to Hampstead Heath and Highgate and Newtown Library, local resources we make good use of.

The nursery is a mix of full and part-time provision for children aged three upwards.

The school building is of traditional design, over three floors, without lifts. In addition to the infant and junior playgrounds, we have a nursery play area and vegetable garden and a dedicated free-flow indoor/outdoor area for Reception children. We have a large, well-stocked library, a well resourced ICT suite, and two large multi-purpose

halls. We also run a vibrant whole-school arts project, sponsored by our active parent-teacher association. Brookfield manages its own kitchens, serving healthy, non-processed food to over 80% of our children each day.

### Admissions

Apply online at **www.eadmissions.org.uk** or, if you are having problems doing so, contact the admissions team on **020 7974 1625**.

At the end of Reception, classes may be reorganised to create the best possible mix of children across the two classes. This may also occur further up the school as the need arises.





**Type of school:** Community  
**Head teacher:** Jacqueline Phelan (pictured with pupils)  
**Address:** Grafton Road, NW5 4AX  
**Tel:** 020 74851947  
**Email:** admin@carlton.camden.sch.uk  
**Website:** carlton.camden.sch.uk  
**Approved entry 2016-17:** 60 places – September intake only  
**Number of full-time nursery places:** 52.

### Admissions

Apply online at **www.eadmissions.org.uk** or, if you are having problems doing so, contact the admissions team on **020 7974 1625**.

## Carlton Primary School

Carlton is an inclusive and thriving two-form entry school which caters for children from nursery to Year 6.

The school is housed in a classic Victorian-style building with halls on the first and second floors. It has two playgrounds and a separate outdoor space for early years foundation pupils. The school has been modernised but has kept its unique charm. We recently opened Camden's first Edible Playground at Carlton, which includes a vegetable and herb garden.

Our most recent Ofsted report judged the school as 'good' with outstanding features. Carlton has received many awards – Camden Award for Inclusion, Enhanced Healthy School Status, Silver Quality Mark in Science and Food for Life. Carlton has also achieved the Achievement for All Quality Mark. Our standards of achievement have been on an upward trajectory over the last few years and our curriculum encourages children to be independent learners.

The ethos of Carlton is summed up in our school motto - 'If you believe, you CAN achieve'.

We are extremely proud of our children's behaviour and attitude to learning.

We also run a wide range of extended provision, from the Early Bird breakfast club to homework, sports and arts after school. Our parents centre hosts a range of programmes for our families.



**Type of school:** Church of England  
**Headteacher:** Paula Walker  
**Address:** Redhill Street, Regent's Park, NW1 4BD  
**Tel:** 020 7387 7881  
**Email:** admin@cchurchnw1.camden.sch.uk  
**Website:** cchurchnw1.camden.sch.uk  
**Approved entry 2016-17:** 30, September intake only  
**Number of full-time nursery places:** 26.

## Christ Church CofE Primary School, NW1

Christ Church is a highly inclusive, and thriving school. Our last Ofsted inspection graded us as a 'good' school, with some elements of outstanding practice. We are particularly proud of our children's behaviour and attitudes, which were recognised as outstanding. Our pupils demonstrate respect and care for each other and for those around them.

Christ Church is a one-form entry primary school. The school has awards for Investors in People, Healthy Schools Status, Sports Mark and Sustainable Travel.

We are a Church of England

school and maintain strong links with St Mary Magdalene's Church in Munster Square, NW1.

When the school has more applications than places available, children are admitted to the Nursery and to the school, according to these criteria, in the following order:

1. Looked-after children or a child who was previously looked-after but immediately after became the subject of an adoption, child arrangement, or special guardianship order.
2. Children whose parent/carer are regular worshippers at St Mary Magdalene's Church, Munster Square.

**continued...see over**

**Christ Church CofE  
Primary School, NW1**

**continued**

3. Children who have a sibling at the school at the time of attendance.
4. Children who already attend the Nursery at Christ Church School.
5. Children whose parent/ carer lives in the Parish of Christ Church and St Mary Magdalene and who worship regularly at other Christian Churches which are members of 'Churches Together in Britain and Ireland' or the 'Evangelical Alliance'.
6. Children whose parent/ carer lives in the Parish of Christ Church and St Mary Magdalene and who are regular worshippers of another world faith and who wish to attend a church school.
7. For children who do not fall into any of the above categories, priority will be determined by distance, measured in a straight line from the child's home address to the main entrance of the school, using the Council's computerised measuring system, with those living closer to the school receiving higher priority.

In all categories where there are more children than places remaining, priority will be given to those applicants whose homes are closest to the school gate.

**Admissions**

Apply online at **www.eadmissions.org.uk** or, if you are having problems doing so, contact the admissions team on **020 7974 1625**. Contact the school or visit the school's website to find out more about our admissions criteria.



**Type of school:**

Church of England

**Headteacher:** Katy Forsdyke

**Address:** Christchurch Hill,  
Hampstead, NW3

**Tel:** 020 7435 1361

**Email:** admin@cchurchnw3.  
camden.sch.uk

**Website:** christchurchschool.co.uk

**Approved entry 2016-17:**  
27, September intake only

**Christ Church Primary School, Hampstead, NW3**

A voluntary-aided CofE primary school in Hampstead, Christ Church is a one-form entry school with seven classes (Reception to Y6). The school was founded in 1855 and much of the attractive stone building dates from this period.

The school has close links with the parish church next to the school and is part of the London Diocesan Board for Schools (LDBS). The school's motto, 'A village school in London', encapsulates the ethos of this small, friendly, community-minded school which makes use of all the opportunities which our proximity to central London affords.

There are high expectations for all and the school has a thriving arts project, as part of a wide range of enrichment activities.

**Admissions**

Apply online at **www.eadmissions.org.uk** or, if you are having problems doing so, contact the admissions team on **020 7974 1625**.

A supplementary form for application under the school's faith criteria should also be returned to the school office by the closing date.

## Christ Church Primary School, Hampstead, NW3

### Oversubscription criteria

Places allocated according to the following priority:

1. Looked-after children or previously looked-after children
2. Children who have a sibling in the school at the time of entry and whose parents worship at Christ Church Parish Church
3. Children who have a sibling in the school at the time of entry
4. Children whose parents worship at the parish church
5. Children who live within one mile of the school measured in a straight line (walking distance)
6. Children whose parents worship at other Anglican churches in the north Camden deanery without church schools
7. Children whose parents worship at other recognised Christian churches
8. Distance from the school.

For the full admissions criteria contact the school or visit the school's website.



**Type of school:** Community  
**Headteacher:** Gwen Lee  
**Address:** 38 Laystall Street,  
EC1R 4PQ  
**Email:**  
admin@chrishatton.camden.sch.uk  
**Website:**  
chrishatton.camden.sch.uk  
**Approved entry 2016-17:** 30,  
September intake only  
**Number of full-time nursery  
places:** 26.

## Christopher Hatton Primary School

Christopher Hatton is a popular one-form entry community school in the Holborn area, catering for children from nursery age to Year 6. The school was graded as 'outstanding' in our most recent Ofsted inspection and has maintained consistently high levels of pupil attainment and progress. We offer a creative, skills-led curriculum enabling pupils to develop resilience, responsibility and resourcefulness.

Our school offers a range of after-school activities, including chess, art, music and sports. There is also a breakfast club which runs from 8am to 8.45am daily.

### Admissions

Apply online at [www.eadmissions.org.uk](http://www.eadmissions.org.uk) or, if you are having problems doing so, contact the admissions team on **020 7974 1625**.







**Type of school:** Community

**Headteacher:**

Amanda Szewczyk Radley

**Address:** 174 Ossulston Street,  
NW1 1DN

**Tel:** 020 7387 7158

**Email:**

admin@edithneville.camden.sch.uk

**Website:** edithneville.camden.sch.uk

**Approved entry 2016-17:**

30, September intake only

**Number of full-time nursery  
places:** 26.

## Edith Neville Primary School

Edith Neville is a thriving, friendly school dedicated to the success of our children. We are a community school that strives to serve families in the local area and all inclusive, reflecting the rich diversity of families in our locality. Our happy, nurturing school has high ambitions for all our children. In our caring and intellectually stimulating environment, praise and encouragement develop the children's natural appetite for personal learning and success. We have high expectations of both achievement and behaviour, so that all may thrive.

A brand new Edith Neville Primary School building is proposed, as part of the redevelopment of Somers Town, through the Council's Community Investment Programme - see [camden.gov.uk/cip](http://camden.gov.uk/cip) for more details.

**Admissions**

Apply online at [www.eadmissions.org.uk](http://www.eadmissions.org.uk) or, if you are having problems doing so, contact the admissions team on **020 7974 1625**.

**Type of school:** Community

**Headteacher:** Kate Flood

**Address:** Lupton Street, NW5 2JA

**Tel:** 020 7485 2155

**Email:**

admin@eleanorpalmer.camden.sch.uk

**Website:**

eleanorpalmer.camden.sch.uk

**Approved entry 2016-17:**

30, September intake only

**Number of full-time nursery  
places:** 26.

## Eleanor Palmer Primary School



Eleanor Palmer is a one-form entry (30 children per year group) community primary school for ages three to 11, which has been judged outstanding in all areas by Ofsted. We are a happy, ambitious and inclusive school, reflecting the rich diversity of families in our area.

**Admissions**

Apply online at [www.eadmissions.org.uk](http://www.eadmissions.org.uk) or, if you are having problems doing so, contact the admissions team on **020 7974 1625**.





**Type of school:** Church of England  
**Headteacher:** Kathryn Fitzsimmons  
**Address:** 152-158 Mill Lane,  
NW6 1TF  
**Tel:** 020 7431 7984  
**Email:**  
admin@emmanuel.camden.sch.uk  
**Website:** emmanuel.camden.sch.uk  
**Approved entry 2016-17:**  
30 (September intake only).  
**Number of full-time nursery  
places:** 30.

## Emmanuel CofE Primary

At Emmanuel School broad opportunities are provided for pupils to develop their full potential and allow them to be healthy, happy and secure. Building on our Christian ethos and in partnership with the whole school community, we provide a stimulating and caring environment where children are valued and nurtured morally, spiritually and academically.

Emmanuel School has moved into a brand new building, which has enabled us to double our intake of children. For more details visit the school website.

### Admissions

Emmanuel is a voluntary aided Church of England school and responsibility for admissions rests with the school governors. We admit 30 pupils to reception

each September - two thirds under route A and one third under route B (see detailed admissions criteria for routes A and B on the [camden.gov.uk](http://camden.gov.uk) website or contact the school). Where applicable, applications will be considered under either route A or route B, but not both. If there are insufficient applications under one route, the places will be allocated to applicants under the other route.

For the full admissions criteria, please contact the school or visit their website. Apply online at [www.eadmissions.org.uk](http://www.eadmissions.org.uk) or, if you are having problems doing so, contact the admissions team on **020 7974 1625**.

**Type of school:** Community  
**Headteacher:** Rob Earrey  
**Address:** 86a Fitzjohn's Avenue,  
NW3 6NP  
**Tel:** 020 7435 9797  
**Email:**  
admin@fitzjohns.camden.sch.uk  
**Website:** fitzjohns.camden.sch.uk  
**Approved entry 2016-17:**  
30 (September intake only)  
**Number of full-time nursery  
places:** 26.

## Fitzjohn's Primary School



Our mission statement is 'to provide an environment where everyone can succeed'.

Fitzjohn's is a heavily oversubscribed one-form entry school. We pride ourselves on the sense of community that is created throughout the school between staff, children and parents. With high quality teaching and support we endeavour to create an environment of success.

Children come to Fitzjohn's from widespread and varied backgrounds. We value the contribution which every child brings to the school community and provide a place of nurture and support in which they can flourish.

### Admissions

Apply online at [www.eadmissions.org.uk](http://www.eadmissions.org.uk) or, if you are having problems doing so, contact the admissions team on **020 7974 1625**.



**Type of school:** Community  
**Head of school:** Blair Thomson  
**Address:** Fleet Road, NW3 2QT  
**Tel:** 020 7485 2028  
**Email:** admin@fleet.camden.sch.uk  
**Website:** fleet.camden.sch.uk  
**Approved entry 2016-17:**  
30 (September intake only)  
**Number of full-time nursery places:** 26.

## Fleet Primary School

At our school we aim to create a secure and stimulating environment where each child can achieve their full potential. We want our children to be enthused and engaged in their learning at all times and our innovative curriculum is organised to provide a broad range of experiences matched to the interests and capabilities of each individual child. Children are encouraged to make decisions for themselves as we help them acquire the skills and confidence to become independent, confident learners.

At Fleet one of our core philosophies is to work in partnership with parents and families. Working together we can build each child's confidence by creating a happy, inclusive environment and sharing high expectations of both academic achievement and social confidence.

### Admissions

Apply online at [www.eadmissions.org.uk](http://www.eadmissions.org.uk) or, if you are having problems doing so, contact the admissions team on **020 7974 1625**.



**Type of school:** Community  
**Headteacher:** John Hayes  
**Address:** Mansfield Road, NW3 2JB  
**Tel:** 020 7485 7435  
**Email:**  
admin@gospeloakschool.com  
**Website:** gospeloak.camden.sch.uk  
**Approved entry 2016-17:**  
60, September intake only  
**Number of full-time nursery places:** 52.

## Gospel Oak Primary School

What our current parents like about the school:

- excellent quality of teaching; strong leadership and management
- positive, committed and enthusiastic staff
- superb music, sport and PE; a creative curriculum
- being invited to observe lessons
- very high standards of behaviour
- exceptional commitment to inclusion and equality of opportunity
- supportive and friendly home-school association; great learning mentor team.

### Admissions

Apply online at [www.eadmissions.org.uk](http://www.eadmissions.org.uk) or, if you are having problems doing so, contact the admissions team on **020 7974 1625**.

**Type of school:**

Church of England

**Headteacher:** Simon Atkinson**Address:** Holly Bush Vale, Heath Street, Hampstead, NW3 6TX**Tel:** 020 7435 4135**Email:** admin@hampsteadprim.camden.sch.uk**Website:**

hampsteadprim.camden.sch.uk

**Approved entry 2016-17:**

30, September intake only.

## Hampstead Parochial CofE Primary School

Hampstead Parochial is a happy school with a history of success. Within a caring Christian environment, based on the recognition of the dignity and worth of each child, high standards are expected. Social, emotional and spiritual development is emphasised along with the pursuit of academic excellence.

What parents like about the school:

- excellent teaching; strong leadership and management
- positive, committed and enthusiastic staff
- superb music, sport and PE; a creative curriculum
- being invited to observe lessons; very high standards of behaviour
- exceptional commitment to inclusion and equality of opportunity
- supportive and friendly home-school association; great learning mentor team.

**Admissions**

Hampstead Parochial is a one-form entry school with 30 places for each academic year group. Where the number of applicants exceeds the number of available places the governors will use the listed criteria.

For entry to Hampstead Parochial in September 2015-16 and thereafter, 15 of the available places will be allocated under foundation (church) criteria and 15 under open criteria (based on proximity to school). Applications should be made either for a foundation place or for an open place.

For the full admissions criteria contact the school or visit the school's website.

All parents applying on our foundation criteria should complete our supplementary information form in addition to their local authority form so that governors can consider their application fully. Supplementary forms should be collected from the school office or downloaded from the school website and returned directly to the school.

For reception places, apply online at **www.eadmissions.org.uk** or, if you are having problems doing so, contact the admissions team on **020 7974 1625**.

See also table, page 70.



**Type of school:** Community  
**Headteacher:** Anne Fontaine  
(pictured, above)  
**Address:** Buck Street, NW1 8NJ  
**Tel:** 020 7485 5020  
**Email:**  
admin@hawley.camden.sch.uk  
**Website:** hawley.camden.sch.uk  
**Approved entry 2016-17:**  
30 (September intake only)  
**Number of full-time nursery  
places:** 26.

## Hawley Primary School

We are a one-form entry community infants school situated in the heart of Camden Town. The smallness of our school helps create a family environment and a community spirit, hence our other title, 'The Village School in Camden'. We aim to ensure that the children who attend our school thrive in a happy and nurturing environment where they and their families are valued.

The current Hawley Infants is being enlarged as a primary school and will admit junior pupils from September 2016.

### Admissions

Apply online at [www.eadmissions.org.uk](http://www.eadmissions.org.uk) or, if you are having problems doing so, contact the admissions team on **020 7974 1625**.

**Type of school:**  
Church of England  
**Headteacher:** Francesca Langley  
**Address:** Trinity Walk, Maresfield  
Gardens, Swiss Cottage, NW3 5SQ  
**Tel:** 020 7435 9089  
**Email:**  
admin@holytrinitynw3.camden.sch.uk  
**Website:** holytrinitycofeprimary.  
fluencycms.co.uk  
**Approved entry 2016-17:**  
27, September intake only

## Holy Trinity CofE Primary School, NW3

Holy Trinity is a small school with a single class in each of its seven years. This is a Church of England primary school and we conduct an act of Christian worship every day. Our vision is to build a school community based on Christian principles where everyone works together to provide a happy, caring, stable and productive learning environment.

### Admissions

Holy Trinity NW3 serves the local community and extends a warm welcome to all children whose parents live or work in the area. All children joining the school in Reception class start in September. The governors strongly advise parents or carers to visit the school for one of our regular parent tours before applying.

Apply online at [www.eadmissions.org.uk](http://www.eadmissions.org.uk) or, if you are having problems doing so, contact the admissions team on **020 7974 1625**. Parents should also complete Holy Trinity Primary School's supplementary form which will be given out on the parent tour and is also available from the school office.

For more details on our admissions criteria, contact us or visit the school's website.



## Holy Trinity and St Silas CofE Primary

### Type of school:

Church of England

**Headteacher:** Lorraine Dolan

**Address:** Hartland Road,  
NW1 8DE

**Tel:** 020 7267 0771

### Email:

head@holytrinitynw1.camden.sch.uk  
admin@holytrinitynw1.camden.sch.uk

### Website:

holytrinitynw1.camden.sch.uk

### Reception entry 2016-17:

30, September intake only.

Holy Trinity and St Silas is a one-form entry CofE school in the heart of Camden. We aim to provide an outstanding education for all our children through our highly creative curriculum and inspirational teaching.

The school has a strong tradition of art, music and drama. We provide a wide range of lunchtime and after-school activities as well as a rich programme of outside learning in galleries, museums and theatres. We are an inclusive school committed to high standards and achievements for all.

### Admissions

For entry to Holy Trinity and St Silas in September 2016, places will first be allocated to looked-after children or a child who was previously looked-after but was then immediately subject to an adoption, child arrangement or special guardianship order.

Thereafter, 60% of available places will be allocated under Foundation (Church) criteria and 40% under Open criteria (based on proximity to school). Applications should be made either for a Foundation place or an Open place.

Candidates unsuccessful in their application for a Foundation place will automatically be considered for an Open place. In the case of twins or a multiple birth, if a place is offered to one of the children priority will be given to the other siblings.

**Foundation places (60% of places):**

All parents applying under our Foundation criteria should complete our supplementary information form, in addition to the Camden form. Forms are available from the school or school website.

These places will be allocated according to the following criteria, in order of priority:

1. Children who will have a sibling at the school at the time of entry and whose parent(s) attend, and have been attending, Holy Trinity Church or St Silas Church, Kentish Town, at least 40 times per year for not less than two years before the closing date of application.
2. Children whose parent(s) attend, and have been attending, Holy Trinity or St Silas Churches, Kentish Town, at least 40 times per year for not less than two years before the closing date of application.

3. Children who will have a sibling at the school at the time of entry and whose parent(s) attend, and have been attending, Holy Trinity or St Silas Churches, Kentish Town, at least 25 times per year for not less than two years before the closing date of application.

4. Children whose parent(s) attend, and have been attending, Holy Trinity or St Silas Churches, Kentish Town, at least 25 times per year for not less than two years before the closing date of application.

5. Children whose parent(s) attend, and have been attending, another Christian church at least 25 times per year for not less than two years before the closing date of application.

If two or more applicants have equal right to a place under this criteria, priority will be given to those children living closest to the school.

**Open Places (40% of places):**  
These will be allocated according to the following criteria in order of priority:

1. Children who will have a sibling at the school at the time of entry.
2. Children living closest to the school.

If two or more applicants have equal right to a place under this criteria, priority will be given to those children living closest to the school.

See also table, page 70.



**Type of school:**

Church of England

**Headteacher:** James Humphries**Address:** Islip Street, NW5 2TU**Tel:** 020 7485 1279**Email:**

admin@kentishtown.camden.sch.uk

**Website:**

kentishtown.camden.sch.uk

**Approved entry 2016-17:**

30, September intake only

**Number of full-time nursery****places:** 26.**Kentish Town CofE Primary School**

We are a CofE school which aims to serve its local community by providing an education of the highest quality within the context of Christian belief and practice. Our school has been remodelled and refurbished to include new classrooms within the school and for the autism resource base. We also have provision for up to six children within the physical disability resource base.

We are a very successful, well resourced and popular school. Our last Ofsted inspection judged us to be good with outstanding leadership and behaviour. We are diverse and inclusive, our children being fully representative of their local community. We are outward looking and fully committed to providing the best possible opportunities for our children. We also ensure our children make excellent progress and achieve well by the time they leave us.

We take particular pride in getting to know our local community. Our open-door ethos and friendly staff allow for this. We believe that working in partnership with our parents is vital to allow for our children to be as confident, successful, respectful and sociable as they need to be.

**Oversubscription criteria**

Our school admits 30 children into the reception class (to include two children in the resource base for autism and one child in the resource base for physical disabilities). Places are allocated according to the following priority:

1. Looked-after child or a child who was previously looked-after but immediately after became the subject of an adoption, child arrangement, or a special guardianship order.
2. Children who have a sibling in the school, where the sibling has a statement of special educational needs or an education, health and care plan.
3. Children who have a sibling in the school at the time of entry, whose parents live within half a mile of our school (measured using the Camden Council website).  
The remaining places will be divided 50% for Foundation places and 50% for Open places.

Foundation places:

4. Children whose parents live within half a mile of our school (measured using the Camden Council website) and who worship at St Benet's Church, having attended at least twice a month for a minimum of two years prior to application.
5. Children whose parents live within a quarter of a mile of our school (measured using the Camden Council website) and who worship at a Christian church that subscribes to the Nicene Creed, having attended at least twice a month for a minimum of two years prior to application.

Open places:

6. Children living in nearest proximity to the school (measured using the Camden Council website).







King's Cross Academy

**Type of school:**

Academy

**Headteacher:** Emyr H. Fairburn

**Address:** King's Cross Academy

4 Wollstonecraft St, N1C 4BT

**Tel:** 020 7504 0533

**Email:**

admin@kingscrossacademy.org.uk

**Website:**

www.kingscrossacademy.org.uk

**Approved entry 2016-17:**

up to 60 places

**Number of full-time nursery**

**places:** 26 places.

## King's Cross Academy

King's Cross Academy opened as a brand new, purpose-built primary school in September 2015. Our school is at the heart of the King's Cross redevelopment, near the fountains in Granary Square, in the same building as Frank Barnes School for Deaf Children (see page 78), with a richness of history and exciting new opportunities on our doorstep.

This is an inclusive and multilingual community that loves learning together. Our aim is that all our pupils will become highly successful learners and have the best start within the best possible environment. The Academy offers a creative and rigorous curriculum, which includes art, music, British Sign Language and French, and which ensures success in the teaching and learning of mathematics and literacy. Children's learning is enriched by partnership projects with the high-profile organisations and businesses nearby. Children enjoy their learning at the school and will achieve high standards that will shape their futures.

Our governors and headteacher want each individual child to become a confident learner who will develop the skills and attitudes to give them the best start in life. The Academy is equipped with the latest technology and a virtual environment that pupils and parents can access online. It has specialist rooms, including an ICT suite, food and design technology rooms. Physical learning features highly at the school - children have access to a multi-level playground, as well as a multi-use games area, the Gasholder Park and green spaces nearby. We provide breakfast and after-school clubs and activities.

### Admissions

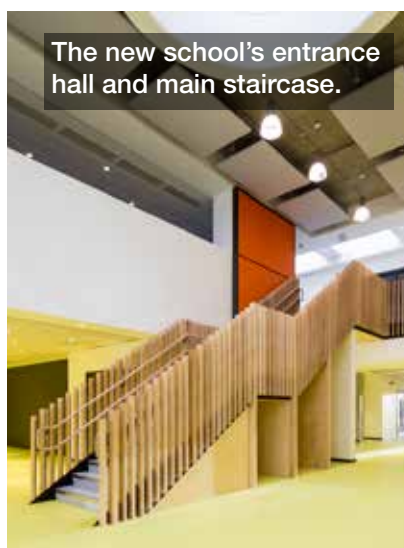
For further information see our website for details about our open events throughout the year.

When you consider putting your child's name down for a place at King's Cross Academy we would like you to meet the headteacher to answer any questions about the school you may have.

Apply online at **www.eadmissions.org.uk** or, if you are having problems doing so, contact our admissions team on **020 7504 0533**.



Illustrator Quentin Blake joins pupils at the opening of the new King's Cross Academy and Frank Barnes School in October 2015.



The new school's entrance hall and main staircase.



**Type of school:** Community  
**Headteacher:** Liz Hayward  
**Address:** Kingsgate Road, NW6 4LB  
**Tel:** 020 7624 5379  
**Email:**  
 admin@kingsgate.camden.sch.uk  
**Website:** kingsgate.camden.sch.uk  
**Approved entry 2016-17:**  
 120, September intake only  
**Number of full-time nursery places:** 39.

At Kingsgate Primary School strong and positive relationships between school, children and families ensure that all our children achieve the best they possibly can academically to give them the best opportunities in life.

## Kingsgate Primary School

We aim to give children a skill set that will maximise their positive life chances in the future. We also aim to give children a particular set of values in the interests of individuals and wider society that prepare our children for life in modern Britain.

Our most recent Ofsted report identifies Kingsgate Primary School as being an outstanding school where “children make excellent progress as a result of good teaching, excellent behaviour and an exciting curriculum”.

In 2016 Kingsgate Primary School will expand over two sites in order to meet the need

for more places for primary pupils in the borough. For more details visit **camden.gov.uk** or the school's website.

### Admissions

Apply online at **www.eadmissions.org.uk** or, if you are having problems doing so, contact the admissions team on **020 7974 1625**.

Please note that, following consultation, it has been determined that the most appropriate arrangement for Kingsgate Primary School is to have a mid-way measuring point between both school sites for admissions purposes (distance criterion (d) - see page 27).



**Type of school:** Community  
**Executive Head:**  
 Bavaani Nanthabalan  
**Address:** Netley Campus,  
 74 Stanhope Street, NW1 3EX  
**Tel:** 020 3772 0350  
**Email:** admin@netley.camden.sch.uk  
**Website:** netley.camden.sch.uk  
**Reception entry 2016-17:**  
 60, September intake only  
**Number of full-time nursery places:** 29.

Netley is a vibrant, inclusive school which includes Woodlands, an outstanding resource base for children with autism (see page 78). Our vision is for all children to aim high, flourish and contribute to society.

## Netley Primary School

Every child is encouraged to be curious and creative. Our staff provide stimulating and meaningful lessons, often working with specialists, entrepreneurs and artists to make learning a rich experience. We offer a wide range of after-school clubs and have a lively school band and choir.

We are currently working towards our Unicef Level 2 Rights Respecting Schools Award and are very proud that the United Nations Convention on the Rights of the Child is at the heart of our curriculum, policy and practice.

Our new purpose-built campus and grounds opened in September 2014, providing a dynamic outdoor learning and play space for sport and for studying nature.

Our most recent Ofsted inspection reported that our pupils are “keen to work hard and thoroughly enjoy the topics teachers prepare for them to study. Around the school they are sensible, polite and kind to one another.”

We care about our children and we believe strongly that working closely with our parents will support our children in their learning and wellbeing. We hope that, by the time they leave the school, our pupils will have a strong sense of identity and be confident, responsible citizens.

### Admissions

Apply online at **www.eadmissions.org.uk** or, if you are having problems doing so, contact the admissions team on **020 7974 1625**.

**Type of school:** Community  
**Interim head:** Karyn Ray  
**Address:** Streatley Place, NW3 1HU  
**Tel:** 020 7431 0961  
**Email:**  
head@newend.camden.sch.uk  
admin@newend.camden.sch.uk  
**Website:** newend.camden.sch.uk  
**Reception entry 2016-17:**  
60, September intake only  
**Number of full-time nursery places:** 39.

**Type of school:** Catholic  
**Executive headteacher:**  
Juliette Jackson  
**Associate headteacher:**  
Moya Richardson  
**Address:** Pratt Street, NW1 0DP  
**Tel:** 020 7485 7997  
**Email:**  
admin@ourladys.camden.sch.uk  
**Website:** ourladys.camden.sch.uk  
**Approved entry 2016-17:**  
30, September intake only.

Our Lady's is a popular school which aims to ensure children thrive in a caring and intellectually stimulating environment with plenty of praise and encouragement. At Our Lady's, we want our children to succeed and gain in confidence so they contribute to society as skilful, happy and well-balanced young people.

Our vision is to create a school community based on Catholic principles where everyone works together to provide a happy, caring, stable and productive learning environment.

As a Catholic school we aim to provide a Catholic education for all our pupils. At a Catholic school Catholic doctrine and practice permeates every aspect of the school's activity. It is essential that the Catholic character of the school's education is fully supported by all families in the school. All applicants are therefore expected to give their full,

## New End Primary School

New End Primary School is a happy and diverse school that seeks to promote high academic achievement for all pupils, whilst ensuring they are well rounded, well adjusted children. Families' contribution to the school is essential and New End believes that communication between parents and staff is paramount. This support

and involvement contributes to the positive learning partnership within which the children can develop their skills and knowledge.

### Admissions

Apply online at **www.eadmissions.org.uk** or, if you are having problems doing so, contact the admissions team on **020 7974 1625**.

## Our Lady's Catholic Primary School

unreserved and positive support for the aims and ethos of the school.

### Admissions

Apply online at **www.eadmissions.org.uk** or, if you are having problems doing so, contact the admissions team on **020 7974 1625**.

A supplementary form for application under the school's faith criteria should also be returned to the school office.

### Oversubscription criteria

Where there are more applications than places available, places will be offered according to the following order of priority:

1. Catholic looked-after children and Catholic children who have been adopted or made subject to child arrangement or special guardianship orders immediately following having been looked-after.
2. Baptised Catholic children.
3. Other looked-after children and children who have been adopted or made subject to residence orders or special guardianship orders immediately following having been looked-after.

4. Children of other Christian denominations whose parents wish them to have a Catholic education.

5. All other applications.

In prioritising applications in each of the above oversubscription criteria, first priority will be given to children who will have a brother or sister attending a Reception, Infant or Junior class in Our Lady's Catholic Primary School at the proposed date of admission.

Tie-breaker:

If there are insufficient vacancies to offer places to all applicants in any of the categories above, priority will be given to children whose parents' or carers' home address is the shortest distance from the main gates of Our Lady's School when measured in a straight line on a map.

Twins or multiple births:

In cases where multiple siblings tie for the last available place, then all will be offered a place, even if this exceeds the planned admission number.

For the full admissions criteria contact the school or visit the school's website.





**Type of school:** Community  
**Headteacher:** Paul Campbell  
**Address:** Princess Road, NW1 8JL  
**Tel:** 020 7722 8500  
**Email:**  
head@primrosehill.camden.sch.uk  
admin@primrosehill.camden.sch.uk  
**Website:** primrosehill.camden.sch.uk  
**Reception entry 2016-17:**  
60, September intake only  
**Number of full-time nursery places:** 39.

## Primrose Hill Primary School

Primrose Hill is a two-form entry school occupying an impressive, listed, Victorian building in a beautiful part of London.

The school looks out on to Regent's Canal and is near to a number of interesting places such as London Zoo, Camden Market and Regent's Park, all of which are visited by the children. The two large playgrounds offer a range of learning opportunities, including sports facilities, a garden and inspiring spaces for creative play. In addition, the separate nursery building has its own enclosed playground.

We aim to maximise children's achievement by removing barriers to learning through a varied, inclusive curriculum delivered in a safe, stimulating environment. The success of

this approach can be seen not just in the fantastic academic results our children achieve, but also in the confidence and enthusiasm for learning our well-rounded children exude.

We promote fairness, justice and equality through our teaching and in the role models we offer. We believe our children's successes affirm this work and are passionate about ensuring they own these values. We welcome families to come and visit our school and see the children enjoying their learning.

### Admissions

Apply online at **www.eadmissions.org.uk** or, if you are having problems doing so, contact the admissions team on **020 7974 1625**.



**Type of school:** Community  
**Headteacher:** Helen Connor  
**Address:** 7-31 Rhyl Street, NW5 3HB  
**Tel:** 020 7485 4899  
**Email:**  
admin@rhylprim.camden.sch.uk  
**Website:** rhylprim.camden.sch.uk  
**Approved entry 2016-17:**  
60, September intake only  
**Number of full-time nursery places:** 52.

## Rhyl Primary School

Rhyl is a harmonious two-form entry school in the heart of Kentish Town. We have high expectations for our children and we aim to enable every child to succeed in happy and safe surroundings. We pride ourselves on our inclusive ethos and on the enriching and diverse curriculum we offer, which caters for the needs of all our children.

Rhyl has an award-winning garden and many opportunities for outdoor learning, supported by our Outdoor Learning Teacher, who works with children throughout the school. We pride ourselves on the wide variety of musical opportunities offered to children, including instrumental lessons, after-school clubs, choir and rock band. Our children achieve highly and develop as confident and successful learners.

Families are welcome to come and visit us or for more information about the school please see our school website.

### Admissions

Apply online at **www.eadmissions.org.uk** or, if you are having problems doing so, contact the admissions team on **020 7974 1625**.

**Type of school:** Community  
**Headteacher:** Kathy Bannon,  
**Address:** 29 Camden Street,  
NW1 0LL  
**Tel:** 020 7387 5909  
**Email:**  
head@rcobden.camden.sch.uk  
admin@rcobden.camden.sch.uk  
**Website:** rcobden.camden.sch.uk  
**Reception entry 2016-17:**  
60, September intake only  
**Number of full-time nursery  
places:** 52.

## Richard Cobden Primary School

Richard Cobden aims to provide good quality education in an inclusive school that allows all pupils equal opportunities, enabling them to develop their thinking and creative skills. For more information about the school you can download a prospectus from the school website at **rcobden.camden.sch.uk**

### Admissions

Apply online at **www.eadmissions.org.uk** or, if you are having problems doing so, contact the admissions team on **020 7974 1625**.

**Type of school:** Catholic  
**Headteacher:** Isobel Gaffney  
**Address:** 238 Haverstock Hill,  
NW3 2AE  
**Tel:** 020 7794 6292  
**Email:**  
admin@rosary.camden.sch.uk  
**Website:** rosary.camden.sch.uk  
**Approved entry 2016-17:**  
45 total, in September intake only.  
**Number of full-time nursery  
places:** 45.

## The Rosary Catholic Primary School

The Rosary School is a Catholic School which strives for academic excellence alongside the spiritual and moral development of each individual child. Situated in leafy Hampstead, we pride ourselves on our calm, friendly, family atmosphere and the quality of our friendships with parents and partners in education.

### Admissions

Apply online at **www.eadmissions.org.uk** or, if you are having problems doing so, contact the admissions team on **020 7974 1625**.

A supplementary form for application under the school's faith criteria should also be returned to the school office.

### Oversubscription criteria

Whenever there are more applicants than places available, priority will always be given to Catholic applicants in accordance with the criteria below.

1. Catholic looked-after children and Catholic children who have been adopted (or made subject to child arrangement or special guardianship orders) immediately after having been looked-after.
2. Baptised Catholic children who have a sibling at this school at the time of admission.

**continued...see over**



### continued

3. Baptised Catholic children who are resident in the Parishes of St Dominic's Priory Southampton Road, NW5 4LB, St Thomas More, Maresfield Gardens, NW3 5SU and St Mary's Holly Place, NW3 6QU.
4. Other baptised Catholics.
5. Other looked-after children and children who have been adopted (or made subject to child arrangement or special guardianship orders) immediately after having been looked-after.
6. Catechumens and members of the Eastern Christian Church.
7. Christians of other denominations whose parents wish them to have a Catholic education and whose application is supported by a minister of religion.
8. Any other applicant.

The governors will give top priority to an application within a category where compelling evidence is provided at the time of application from an appropriate professional, such as a doctor, priest or social worker, of an exceptional social, medical or pastoral need of the child which can only be met at this school.

Where the offers of places to all the applicants listed above would lead to oversubscription the following provisions will be applied:

The attendance of a brother or sister, including step and half siblings, at the school at the time of enrolment will increase the priority of an application within each category.

Where the final place is offered to a child who has other siblings applying for a place in the same school year, these siblings will also be admitted.

Previous years:

As this school is usually oversubscribed by Catholic candidates, it is very unlikely that applicants who are non-Catholics will obtain a place.

Tie-break:

Where the offer of places to all the applicants in any of the sub-categories listed above would still lead to oversubscription, the places up to the admission number will be offered to those living closest to the school.

For the full admissions criteria contact the school or visit the school's website.

See also table on page 70.





**Type of school:** Church of England  
**Headteacher:** Mary Thorne  
**Address:** Baldwin's Gardens,  
 Holborn, EC1N 7SD  
**Tel:** 020 7242 8585  
**Email:**  
[admin@stalbans.camden.sch.uk](mailto:admin@stalbans.camden.sch.uk)  
**Website:** [stalbanscamden.co.uk](http://stalbanscamden.co.uk)  
**Approved entry 2016-17:**  
 30, September intake only  
**Number of full-time nursery  
 places:** 26.

We are a church school for children aged three to 11, situated in the heart of Holborn, and recently rated 'outstanding' by Ofsted. The school is a vibrant place to be, with lots of exciting things going on. Our school is made up of children and staff from lots of different backgrounds and faith communities. We pride ourselves on valuing the unique child, and celebrating diversity. Our hope is that children will leave our school with high aspirations for their lives, with an inner confidence that enables them to take risks and with good interpersonal skills.

We aim for all our children to achieve high standards academically and therefore provide an exciting and challenging curriculum that will enable them to do so. Our after-school clubs are varied and provide children with the opportunity to get involved in a wide range of activities, including music, sport, drama and art.

## St Alban's CofE Primary School

We are lucky to have a large amount of outdoor space, giving children access to two playgrounds and an environmental garden. Children have the opportunity to grow their own vegetables and are involved in maintaining the garden. Parents play an important part in the life of our school and are always made to feel welcome.

### Admissions

Apply online at [www.eadmissions.org.uk](http://www.eadmissions.org.uk) or, if you are having problems doing so, contact the admissions team on **020 7974 1625**.

A supplementary form must also be filled in and can be obtained from the school or via the school's website.

### Oversubscription criteria

1. Church of England looked-after children or a child who was previously looked-after but immediately after being looked-after became subject to an adoption, child arrangement or special guardianship order.
2. 'All other' looked-after children or a child who was previously looked-after but immediately after being looked-after became subject to an adoption, child arrangement or special guardianship order.
3. Children whose parent(s) worship at the church of St Alban the Martyr, Holborn, having attended at least once a month for a minimum of six months prior to the date of application.

4. Children who have a brother or sister attending the school at the time of admission.
5. Children who live in the parish of St Alban the Martyr, Holborn.
6. Children who do not live in the parish but whose parent(s) worship at any other Christian church of the Churches Together in Britain and Ireland and the Evangelical Alliance, having attended at least once a month for a minimum of six months prior to the date of application.
7. All other children.

In criteria 3 – 7, priority will be given to those children who have attended the nursery for at least two terms. In each of the numbered categories, if there are more applicants than places, priority is given to applicants living nearest to the main entrance of the school on Baldwin's Gardens measured by a straight line 'as the crow flies'.

In cases where multiple siblings tie for the last available place, then all will be offered a place, even if this exceeds the planned admission number.

For the full admissions criteria contact the school or visit the school's website.

See also table, page 70.



**Type of school:** Catholic infant  
**Headteacher:** Jacqueline Cox  
**Address:** 28 Phoenix Road,  
 NW1 1TA  
**Telephone:** 020 7387 3551  
**Fax:** 020 7255 9719  
**Email:**  
[admin@staloyusinf.camden.sch.uk](mailto:admin@staloyusinf.camden.sch.uk)  
**Website:**  
[staloyusinf.camden.sch.uk](http://staloyusinf.camden.sch.uk)  
**Approved entry 2016-17:**  
 60 places September intake only  
**Number of full-time nursery  
 places:** 30.

## St Aloysius' Catholic Infant School

We are an inner city, multicultural Catholic school where through our ethos, diversity is celebrated. We have two forms of entry and are in the heart of Somers Town within easy reach of Euston, King's Cross and St Pancras stations.

### Admissions

Apply online at **www.eadmissions.org.uk** or, if you are having problems doing so, contact the admissions team on **020 7974 1625**.

A supplementary form for an application under the school's faith criteria should be completed and returned to the school office.

### Oversubscription criteria

Offers of places will be made in accordance with the following criteria and in order of priority.

1. Catholic looked-after children and Catholic children who have been adopted (or made subject to child arrangement or special guardianship orders) immediately after having been looked-after.
2. Children who are baptised at the time of applying for a place and whose parents or legal guardians are committed practising members of the Catholic Church, and who live in the parish of St. Aloysius.
3. Catholic children living in the parish of St Aloysius, and the parish formally known as St Anne's, with siblings in the school at the time of admission.

4. Catholic children of Catholic staff who have worked at the school for a minimum of two years.
5. Catholic children who live in other parishes.
6. Other looked-after children and children who have been adopted (or made subject to child arrangement or special guardianship orders) immediately after having been looked-after.
7. Christian children of other denominations whose parents wish them to have a Catholic education.
8. Children of non-Catholic staff who have worked at the school for a minimum of two years.
9. Children of other faiths whose parents wish them to have a Catholic education.
10. Any other applicant.

If the admissions figure has not been reached after applying the above procedure, distance will be used as a measurement. Distance will be measured in a straight line from the home address to the school using a computerised mapping system.

For the full admissions criteria contact the school or visit the school's website.



**Type of school:** Catholic junior

**Headteacher:** Jim O'Shea

**Address:** Aldenham Street,  
NW1 1PS

**Tel:** 020 7387 9591

**Email:**

admin@staloyisusjun.camden.sch.uk

**Website:**

staloyisusjun.camden.sch.uk

**Approved entry 2016-17:**

60, September intake only.

We aim to provide a curriculum that engages and motivates pupils, with creativity and purpose at the heart of all learning. We hope that children's time here will be an enjoyable and exciting experience. We are a Christian community, emphasising the importance of respect and responsibility, treating others as we would want to be treated. There is also a strong focus on becoming more independent and taking increasing responsibility for learning. We aim to give each child the relevant skills and knowledge to create a better understanding of the world they face now, and in the future.

## St Aloysius' Catholic Junior School

### Admissions

Apply online at [www.eadmissions.org.uk](http://www.eadmissions.org.uk) or, if you

are having problems doing so, contact the admissions team on **020 7974 1625**.

A supplementary form for application under the school's faith criteria should also be returned to the school office.

### Oversubscription criteria

Places are allocated according to the following priority:

1. Catholic looked-after children, and Catholic children, who have been adopted (or made subject to a child arrangement or special guardianship order) immediately after having been looked-after.
2. Catholic children who are baptised in the Catholic Church at the time of applying for a place; children whose parent(s) or legal guardian(s) are committed practising members of the Catholic Church, and who live in the parish of St Aloysius.

If the admissions figure would be exceeded by applying the above two criteria, additional criteria shall be taken into account in the following order:

3. Catholic children living in the parish of St Aloysius' with siblings in St Aloysius' Catholic Junior School at the time of admission.

If the admissions figure has not been reached after applying the above procedure, the criteria in those sections shall be

applied in the following order to:

4. Catholic children who live in other parishes and attend St Aloysius' Catholic Infant School.
5. Baptised Catholic children of Catholic staff who have worked at the school for a minimum of two years.
6. Catholic children who live in other parishes and attend other infant schools.
7. Other looked-after children or those who have been adopted (or made subject to child arrangement or special guardianship order) immediately after having been looked-after.
8. Children of non-Catholic staff who have worked at the school for a minimum of two years.
9. Christian children of any other denomination whose parents wish them to have a Catholic education.
10. Children of other faiths whose parents wish them to have a Catholic education.
11. Any other applicant.

If there is oversubscription the following provision will apply:

Priority will be given to those living nearest to the school. Distance from the school front gate to the child's home, measured by the shortest walking distance.

For the full admissions criteria contact the school or visit the school's website.



**Type of school:** Catholic primary

**Headteacher:** Jennifer O'Prey

**Address:** Southampton Road,  
NW5 4JS

**Tel:** 020 7485 5918

**Email:**

admin@stdominics.camden.sch.uk

**Website:** stdominics.camden.sch.uk

**Approved entry 2016-17:**

45, September intake only.

## St Dominic's Catholic Primary School

We have a happy and lively school and strive to give every child the best education we can. We aim to create a positive learning environment where all children can reach their potential.

We want every child who comes to us to feel valued as part of the community, to work hard, show good manners and care for the environment. We believe that a strong partnership between home and the school is vital.

### Admissions

Where there are more applications than places available, places will be offered according to the following order of priority:

1. Catholic looked-after children and Catholic children who have been adopted (or made subject to child arrangement or special guardianship orders) immediately after having been looked-after.
2. Baptised Catholic children who live in the Parish of St Dominic's who have a sibling at the school at the time of admission.
3. Baptised Catholic children from families who live in the Parish of St Dominic's.
4. Other baptised Catholics.
5. Other looked-after children and children who have been adopted (or made subject to child arrangement or special guardianship orders) immediately after having been looked-after.
6. Christians of other denominations whose parents wish them to have a Catholic education.
7. Children of other faiths whose parents wish them to have a Catholic education.
8. Any other children.





**Type of school:** Catholic

**Executive headteacher:**

Juliette Jackson

**Associate headteacher:**

Greg Donohue

**Address:** Mazenod Avenue,  
West Hampstead, NW6 4LS

**Tel:** 020 7624 4837

**Email:**

[admin@steugene.camden.sch.uk](mailto:admin@steugene.camden.sch.uk)

**Website:** [steugene.camden.sch.uk](http://steugene.camden.sch.uk)

**Approved entry 2016-17:**

30, September intake only

## St Eugene de Mazenod Catholic Primary School

We are a Catholic school, identified by Ofsted as 'outstanding', serving our local community. Our refurbished school comprises modern classrooms and excellent outdoor spaces and play facilities.

### Admissions

Apply online at **www.**

**eadmissions.org.uk** or, if you are having problems doing so, contact the admissions team on **020 7974 1625**.

A supplementary form for application under the school's faith criteria should also be returned to the school office.

### Oversubscription criteria

In prioritising applications in each of the following oversubscription criteria, first priority will be given to children who will have a brother or sister, step brothers and sisters, half brothers and sisters or adopted brothers and sisters attending the school at the proposed date of admission.

In the case of twins or a multiple birth, if a place is offered to one of the children priority will be given to all of the other siblings.

Where there are more applications than places available, places will be offered according to the following order of priority:

1. Catholic looked-after children and Catholic children who have been adopted (or made subject to child arrangement or special guardianship orders) immediately after being looked-after.
2. Baptised Catholic children who live in the parish of the Sacred Heart, Kilburn.
3. Other baptised Catholic children.
4. Other looked-after children and children who have been adopted (or made subject to child arrangement or special guardianship orders) immediately after being looked after.
5. Children of other Christian denominations whose parents wish them to have a Catholic education
6. All other applications.

Where a category is oversubscribed, priority will be given to those children whose home address is the shortest distance from the school's main entrance measured in a straight line on a map.

For the full admissions criteria contact the school or visit our website.

See also table on page 70.



**Type of school:** Church of England  
**Executive headteacher:**  
Angela Abrahams  
**Head of School:** Adam Young  
**Address:** John's Mews, WC1N 2NX  
**Tel:** 020 7405 5640  
**Email:**  
admin@stgeorge.camden.sch.uk  
**Website:** stgeorge.camden.sch.uk  
**Approved entry 2016-17:** 30  
**Number of full-time nursery places:** 12.

St George the Martyr is a Church of England Primary School, identified by Ofsted as 'outstanding'. Along with a rich history, our school building has been completely refurbished and is a wonderful, stimulating learning environment. The school caters for children from nursery up to Year 6. Our school motto is "Go Shine in the World" and we think that our rich and creative curriculum, with a strong focus on standards enables children to reach this goal.

## St George the Martyr CofE Primary School

### Admissions criteria

1. Looked-after children and previously looked-after children. Previously looked-after children are those who were looked-after, but ceased to be so because they were adopted (or became subject to a child arrangement or special guardianship order).
2. Children who are regular attendees of the Church of St George the Martyr, Queen Square, or Holy Cross, Cromer Street. Confirmation of regular attendance will be required from a Parish Priest/Minister. Children in this section will be sub-divided into weekly, fortnightly and monthly church attendance for a year: with weekly attendance being prioritised above fortnightly and fortnightly being prioritised over monthly.
3. Children who are regular attendees of the Church of England or other Christian denominations. Confirmation of regular attendance will be required from a Parish Priest/Minister. Children in this section will be sub-divided into weekly, fortnightly and monthly church attendance for a year: with weekly attendance being prioritised above fortnightly and fortnightly being prioritised over monthly.
4. Children with a sibling (brother or sister) currently at the school. A sibling is considered if he or she is attending in Years 1 to 6 at the time for which admission is sought. Sibling refers to brother or sister, adopted brother or sister, step brother or sister, or the child of the carer's partner, where the child of whom the school place is sought is living in the same family unit at the same address as the sibling.
5. Children living within the parishes of St George the Martyr, Queen Square or Holy Cross, Cromer Street.
6. Any other child.

Thirty children will be admitted to Reception class in September. Children are admitted in numbered category order.

If there are more applicants than places in a category, priority will be given to applicants living nearest the school, measured in a straight line 'as the crow flies' from the centre of the home to the centre of the school.

Apply online at **www.eadmissions.org.uk** or, if you are having problems doing so, contact the admissions team on **020 7974 1625**.

A supplementary form for application under the school's criteria should also be returned to the school office.

For the full admissions criteria contact the school or visit the school's website.

**Type of school:**

Catholic

**Executive headteacher:**

Helen Tyler

**Address:** Macklin Street,  
WC2B 5NA

**Tel:** 020 7242 7712

**Email:**

admin@stjosephs.camden.sch.uk

**Website:** stjosephs.camden.sch.uk

**Approved entry 2016-17:**

30, September intake only

**Number of full-time nursery  
places:** 26.

## St Joseph's Catholic Primary School

St Joseph's is a one-form entry Catholic Primary School, just off Drury Lane. Rated 'outstanding' by Ofsted in February 2014, we view ourselves as a single school family, and we aim to provide the best possible, highly personalised education for every child, developing the whole person – socially, emotionally, creatively, physically, academically and spiritually - in an environment that is safe, calm and challenging.

**Admissions**

Apply online at **www.eadmissions.org.uk** or, if you are having problems doing so, contact the admissions team on **020 7974 1625**.

A supplementary form for application under the school's faith criteria should also be returned to the school office.

**Oversubscription criteria**

Where there are more applications than the number of places available, places will be offered according to the following order of priority.

1. Catholic looked-after children and Catholic children who have been adopted (or made subject to child arrangement or special guardianship orders) immediately after being looked-after.
2. Catholic children living in the parishes of: St Anslem and St Cecilia, Lincoln's Inn Fields, WC2; St Etheldreda, Ely Place, EC1; St Patrick's, Soho Square, W1; Corpus Christi, Maiden Lane, WC2.

3. Other baptised Catholic children from other parishes whose applications are supported by the diocesan priest's reference.
4. Baptised Catholic children.
5. Other looked-after children and children who have been adopted (or made subject to child arrangement or special guardianship orders) immediately after being looked-after.
6. Catechumens and children of Eastern/Orthodox churches.
7. Children from Christian families with a religious referee.
8. Children of other faiths whose parents wish them to have a Catholic education.
9. Any other child or children.

The attendance of a brother or sister at the school at the time of enrolment will increase the priority of an application within each and every category.

Where the final place is offered to a child who has other siblings applying for a place (e.g. twins/triplets) in the same year/class, these siblings will also be admitted.

Priority will be given within a category to children of teaching staff, where the staff member has been employed at the school for at least two years at the time of application.

**continued...see over**



## St Joseph's Catholic Primary School

continued

Governors will give top priority, after the appropriate category of looked-after children, to an application where compelling evidence is provided at the time of application, from an appropriate professional such as a doctor, priest or social worker, of an exceptional social, medical, pastoral or other need of the child, which can only be met at this school.

Tie break:

Where the offer of places to all the applicants in any of the sub-

categories listed above would still lead to oversubscription, the places up to the admission number will be offered to those living nearest to the school. Distance is measured in a straight line from the home address to the school using a computerised mapping system.

For the full admissions criteria contact the school or visit the school's website.

See also table on page 70.



### Type of school:

Church of England Free School

**Headteacher:** Gill Tyler

**Address:** Kidderpore Avenue,  
NW3 7SU

**Tel:** 020 7435 5604

**Email:** office@stlukesschool.org.uk

**Website:** stlukesschool.org.uk

**Approved entry 2016-17:**

15, September intake only

## St Luke's CofE School, NW3

St Luke's School was the first Church of England free school in the country. It opened in September 2011 to help meet a local shortage of primary school places. For this reason, children are admitted to the school by geography, so St Luke's School is fully inclusive, welcoming families of all faiths and none.

Our vision is to develop an excellent school for the local community where the Christian values of faith, hope and love are evident in everything that happens. Through nurturing our children, both academically and spiritually, we aim to provide them with secure foundations for life, so that they leave St Luke's with an excellent all round education and a love of learning.

A new Reception class of 15 children is admitted each September, while children from Year 1 upwards are taught in mixed-age classes of 30.

Eventually the school will have four classes accommodating Reception, Years 1 and 2, Years 3 and 4 and Years 5 and 6.

### Admissions

Apply online at **www.**

**eadmissions.org.uk** or, if you are having problems doing so, contact the admissions team on **020 7974 1625**.

The criteria follows the Camden community schools admissions criteria. See pages 27 to 29.



**Type of school:** Church of England

**Headteacher:**

Sheila McCalla-Gordon

**Address:** 81 Werrington Street,  
NW1 1QP

**Tel:** 020 7387 6117

**Email:**

admin@stmp.camden.sch.uk

**Website:**

stmp.camden.sch.uk

**Approved entry 2016-17:**

30, September intake only.

**Number of full-time nursery places:** 26.

St Mary and St Pancras is an 'outstanding' (Ofsted report) Church of England school that is committed to enabling all children to reach their full potential. We provide opportunities for each individual child to access and excel in a broad and balanced curriculum. We aim to contribute to every child's moral, spiritual, intellectual, social and physical wellbeing through excellence and enjoyment.

**Admissions**

The governors are responsible for admissions to the school. Applications for admission must be made as follows:

- Apply online at **www.eadmissions.org.uk** or, if you are having problems doing so, contact the admissions team on **020 7974 1625**.
- If you are requesting a place under Route A you should also complete the school's own supplementary form and Christian worship form so that the governors can consider your application fully. These forms must be returned to the school by **7 January 2016**.

**St Mary and St Pancras CofE Primary School**

**Oversubscription criteria**

When there are more applicants than there are places, the governors will allocate places to children in accordance with the following approved and published criteria. The criteria will be applied in order of precedence starting with the criterion number 1. Applications will be considered under either route A OR route B. After the admission of any looked-after children and those with a statement of special educational needs or education, health and care plan, 2/3rds will be admitted under route A and 1/3rd under route B. Responsibility for admissions rests with the governors.

**Admissions criteria**

1. Looked-after children or a child who was previously looked-after but immediately after being looked-after became subject to an adoption, child arrangement or a special guardianship order.

Then EITHER Route A: 2/3 of remaining places:

A2. Children whose parents/ carers are regular worshippers at either St Mary's or St Pancras Old Church in the Parish of Old St Pancras or St Pancras Church on the Euston Road, and who reside within the parishes of Old St Pancras or St Pancras. (Regular worship is attendance at least fortnightly at services for a period of at least one year prior to the application.) A completed Christian worship form is required from the relevant parish priest.

A3. Children whose parents are regular worshippers (as detailed above) at other Christian

churches who are members of or affiliated to Churches Together in Britain and Ireland or the Evangelical alliance, and who reside within 0.33 miles of the school (distance will be measured in a straight line from the child's home address to the centre of the school, using Camden's computerised measuring system). A completed Christian worship form is required from the relevant parish priest. (Children who have access to a local denominational school of their own faith will not be considered under this category.)

Any remaining places left under THIS criterion will be awarded from Route B (see below).

OR Route B: 1/3 of remaining places:

B2. Children with a sibling at the same school who will still be on roll when they join. Sibling refers to brother or sister, half-brother or half-sister, adopted brother or sister, step-brother or step-sister, or the child of the parent/carer's partner where the child for whom the place is sought is living in the same family unit at the same address as the sibling. A sibling relation does not apply when the older child will leave before the younger one starts.

B3. Of the remaining applicants, distance will be measured in a straight line from the child's home address to the centre of the school, using Camden's computerised measuring system with those living closer to the school receiving higher priority.

For the full admissions criteria contact the school or visit the school's website.



**Type of school:** Church of England

**Consultant head:** Juliette Jackson

**Associate head:** Clare Dyson

**Address:** Quex Road, Kilburn,  
NW6 4PG

**Tel:** 020 7624 8907

**Email:**

admin@stmarykilburn.camden.sch.uk

**Website:**

stmarykilburn.camden.sch.uk

**Approved entry 2016-17:**

30, September intake only

**Number of full-time nursery**

**places:** 26.

## St Mary's CofE School, Kilburn

St Mary's has an outstanding record for the support and education of local children. Our strong Christian ethos underpins the whole school atmosphere and our Ofsted report complimented the school on the behaviour of our children and the strong sense of community in the school. We have a 26-place, full-time nursery and a modern building with large grounds and excellent facilities. Staff constantly strive to improve and enhance the curriculum we offer and ensure that our children learn, feel safe and take pride in themselves. We offer a rich, creative curriculum and encourage pupils to develop a love of learning and an understanding of the world around them, as well as high expectations, academic standards and progress.

### Admissions

Apply online at **www.eadmissions.org.uk** or, if you are having problems doing so, contact the admissions team on **020 7974 1625**.

A supplementary form for application under the school's faith criteria should also be returned to the school office.

If oversubscribed the following criteria will be used, in order of preference:

1. Children in the care of the local authority.
2. Children whose parents have been regularly attending St Mary with All Souls Church, Abbey Road, NW6 4SN or St James's Church, Sheriff Road, NW6 2AP for a period of at least nine months prior to the date of the application, preference being given first to baptised children.
3. Children who attend St Mary's school nursery.
4. Children whose parents live within the school's defined area and regularly attend other Christian churches, preference being given first to Anglican families and then to baptised children attending other churches.
5. Children whose parents live within the school's defined area, and have specific medical or social needs that the school is particularly able to meet.
6. Children who live nearest the school measured from the school's main entrance.

For the full admissions criteria contact the school or visit the school's website.



**Type of school:** Church of England

**Headteacher:** Lynn Trigg

**Address:** 88 Camden Street,  
NW1 0JA

**Tel:** 020 7485 8965

**Email:**

admin@stmichaels.camden.sch.uk

**Website:** stmichaels.camden.sch.uk

**Approved entry 2016-17:**

30, September intake only

**Number of full-time nursery**

**places:** 30.

## St Michael's Camden Town

St Michael's is a one-form entry Church of England School, set in the heart of Camden Town. We welcome children from a wide range of ethnic backgrounds and from different faith communities. We have a full-time nursery offering 30 places.

Our mission statement, 'Life in all its fullness', sums up the aspiration we have for our pupils. We want all the children in our care to achieve highly in their academic studies, to learn to play a musical instrument, to participate in a wide range of sporting activities and to experience an extensive cultural programme of visits to museums, art galleries and concerts.

Governors hope that parents have chosen this school knowing that it is a Church of England School with a distinct Christian ethos, to which they will give their full support. We also hope that all children attend the acts of collective worship and will take part in the religious education offered by the school.

### Admissions

Parents considering sending their child to the school are strongly encouraged to contact the headteacher to arrange a meeting which will include an opportunity to view the school. This meeting is to provide you with information about the school to help you to make an informed choice about whether the school is right for you and your child, but plays no part in determining who is admitted to the school.

If there are more applications than places, the governors will give places to looked-after children (or a child who was previously looked-after but immediately after being looked-after became subject to an adoption, residence, or special guardianship order) and then up to 10 Foundation places and up to 20 Open places.

Apply online at **www.**

**eadmissions.org.uk** or, if you are having problems doing so, contact the admissions team on **020 7974 1625**.

If you are applying for a Foundation place at St Michael's, or for an Open place and have another child at the school, you must also complete the school's own supplementary form so that the governors can consider your application fully.

This form can be downloaded from the school's website.

For more details contact the school or visit the school's website.

See also table, page 70.



**Type of school:** Roman Catholic  
**Headteacher:** Sean Cranitch  
**Address:** Holmes Road, NW5 3AH  
**Tel:** 020 72671200  
**Email:**  
 admin@stpatricks.camden.sch.uk  
**Website:** stpatricks.camden.sch.uk  
**Approved entry 2016-17:**  
 30, September intake only  
**Number of full-time nursery places:** 26.

At St Patrick's we aim to provide an excellent education for children of all abilities, inspired by our Catholic faith. Promoting self-esteem and a love of learning are at the heart of our mission.

In our safe, happy school we provide a rich and varied curriculum, where the children learn the basics – reading, writing, mathematics, science, IT and RE. We encourage pupils to know themselves, to develop spiritually and emotionally, and to discover their talents through high quality provision of art, music, drama and sport.

Our results have been improving year on year and are now among the best. We have been successful in delivering excellent outcomes for all our children, including those of higher ability.

The school is a vibrant, welcoming, learning community. We celebrate our diversity – the different languages and cultures to which our pupils are connected.

## St Patrick's Catholic Primary School

We also celebrate that which brings us together: belonging to the UK, living in London, the English language and the Catholic faith.

The school's curriculum is rich, varied and innovative. We go on more school visits and have more visitors than comparable schools. Every child experiences three years of musical tuition. There is an artist in residence and the school has regularly been recognised for its sporting excellence.

### Admissions

To apply for a place at St Patrick's, you need to complete and return two separate forms by January. You should complete the school's supplementary information form and return it in person to the school office, accompanied by the child's Certificate of Baptism and proof of residency.

Apply online at **www.eadmissions.org.uk** or, if you are having problems doing so, contact the admissions team on **020 7974 1625**.

### Oversubscription criteria

Places in the school are awarded according to the criteria which follow.

1. Catholic looked-after children and Catholic children who have been adopted (or made subject to child arrangement or special guardianship orders) immediately following having been looked-after.

2. Children from practising Catholic families who are resident in the parish of Our Lady Help of Christians, and whose application is supported by a reference from the parish priest.
3. Children from other practising Catholic families and whose application is supported by a reference from a parish priest.
4. Other Catholic children.
5. Other looked-after children and children who have been adopted (or made subject to child arrangement or special guardianship orders) immediately following having been looked-after.
6. Practising members of an Eastern Christian Church, supported by a reference from their minister.
7. Christians of other denominations whose parents wish them to have a Catholic education and whose application is supported by their minister.
8. Children of other faiths whose parents wish them to have a Catholic education and whose application is supported by their religious leader.
9. Any other applicant.

For the full admissions criteria contact the school. For more details contact the school or visit the school's website.

See also table, page 70.





**Type of school:** Church of England  
**Headteacher:**

Pana McGee (pictured)

**Address:** Elsworthy Road,  
Primrose Hill, NW3 3DS

**Tel:** 020 7722 7381

**Email:**

[admin@stpauls.camden.sch.uk](mailto:admin@stpauls.camden.sch.uk)

**Website:** [stpauls.camden.sch.uk](http://stpauls.camden.sch.uk)

**Approved entry 2016-17:**

30, September intake only.

## St Paul's CofE Primary School

We are next to Primrose Hill Park and a popular, oversubscribed school with one class for each year group. Our school aims to prepare young people for a happy, confident entry into the world. This means building their confidence and belief in themselves, helping them to make good friendships, develop a wide range of interests and skills, as well as inspiring them to achieve academic excellence.

Our pupils come from diverse backgrounds and we are proud to reflect the cosmopolitan mix of the local community. The school has a strong partnership with St Mary the Virgin Church and the clergy regularly lead collective worship at the school and the church.

Governors hope that all children will attend acts of worship and will take part in the religious education curriculum. The governors welcome visits from parents before expressing a preference for the school. If you would like to meet the head of school or attend a parent tour, please contact the school.

### Admissions

Apply online at **www.**

**eadmissions.org.uk** or, if you are having problems doing so, contact the admissions team on **020 7974 1625**.

For entry to St Paul's CofE Primary School, 50% of available places will be allocated under Foundation (Church) Criteria and 50% under Open Criteria (based on proximity to school). Applications should be made either for a Foundation Place or for an Open Place. Candidates unsuccessful in their application for a Foundation Place will automatically be considered for an Open Place.

All parents applying on our Foundation Criteria must complete our supplementary information form in addition to the Camden form. Forms should be collected from the school office or downloaded from the school website and returned directly to the school by the deadline.

For details of the full admissions criteria contact the school or visit the school's website.

See also table, page 70.



## Torriano Primary School

A new Torriano Primary School has been formed for children aged three to 11. The new school means greater continuity for pupils, with no need for infants to move to a separate junior school, better planning across all key stages and greater sharing of best practice, curriculum and other resources by staff.

### Admissions

Apply online at [www.eadmissions.org.uk](http://www.eadmissions.org.uk) or, if you are having problems doing so, contact the admissions team on **020 7974 1625**.

**For details of early years provision and nursery contact details, see Section 5, page 74.**

**Type of school:** Community

**Executive headteacher:**

Bavaani Nanthabalan

**Head of school:**

Helen Bruckdorfer

**Address:**

Torriano Avenue, NW5 2SJ

**Telephone:** 020 7424 0202 (Key Stage Two - juniors) and 020 7485 4325 (Key Stage One - infants)

**Email:**

[admin@torrianojun.camden.sch.uk](mailto:admin@torrianojun.camden.sch.uk)

**Website:**

[torrianojun.camden.sch.uk](http://torrianojun.camden.sch.uk)

**Approved entry 2016-17:**

58, September intake only

**Number of full-time nursery places:** 25.

# Meet Keighley Hylton



## Camden's new Healthy Lifestyles Outreach Practitioner from the Camden School Nursing Team.

I work in Camden schools to help children and young people lead healthy lives. I work with children and parents, offering practical support to change behaviour and reach personal goals.

As a Nutritionist I can help identify your child's specific needs to help them reach a healthy weight, do more exercise and eat healthier food. I offer 1:1 appointments in schools with children concerned about their weight. I can also do home visits to help motivate, inspire and support families to adopt a healthier lifestyle through a professional, knowledgeable and empathetic approach.

To make an appointment or for an informal chat, speak to your school nurse or contact me:

[Keighley.hylton@nhs.net](mailto:Keighley.hylton@nhs.net)

020 3317 2304

07771345283

**Hunter Street Health Centre**

**8 Hunter Street**

**London WC1N 1BN**





# Section 4: Results and appeals

## Application results

### Notification of results

You will be notified of the result of your application by first class mail on **18 April 2016**.

If you applied online then you will be able to pick up your result on the evening of **18 April 2016**. If you do not receive this notification, then please contact the Council's admissions team as soon as possible. You will be asked to contact us to confirm whether or not you wish to accept the offer. Please ensure that you return your accept/decline reply slip to the Council's admissions team by the deadline of **2 May 2016**. If you do not respond, it could result in the offer being withdrawn and offered to the next child on the waiting list. Similarly, if a place is offered and accepted but the child does not start school within two weeks following the start of term, the place may be offered to another child.

### Waiting lists

Waiting lists for all Camden primary schools are ordered according to the published admissions criteria. The waiting list does not take account of the parents' order of preference because 'preference' is not part of the admission criteria. A child's name will not be placed on any waiting list for a lower preference where he or she has been offered a place at a school that the parent ranked higher. Waiting lists are revised every time any relevant factors relating to any applicant changes and it is possible for applicants to go down as well as up the list. A place on the waiting list is not a guarantee of a place in the school. Equally, the length of time spent on a waiting list does not affect your place on the list. All applications that are deemed to be late (received after the closing date of **15 January 2016**) are placed at the appropriate place on the waiting list once offers have been made.

### Example 1

A parent ranks Kingsgate as highest preference and is offered a place there. The child will not be put on the waiting list for any of the schools that were ranked lower by the parent, as they were offered their highest possible preference.

### Example 2

A parent names three preferences on their application and ranks them in the following order:

- 1** Netley
- 2** Edith Neville
- 3** Fitzjohn's

If the parent is offered Edith Neville, the child's name will remain on the Netley waiting list, as this preference was higher than the offered school. However, the parent will not be put on the Fitzjohn's waiting list as this school was listed lower than the offered school.

If you are not successful with any of the schools you expressed a preference for, Camden admissions team will attempt to offer Camden residents the nearest Camden primary school that has a vacancy.

**Parents will still have the right of appeal in respect of any preference which they have not been offered.**

## Appeals

You may appeal for a place at any school to which you have applied and have been refused a place. In other words, you can make an appeal for any of your preferences. For voluntary aided schools in Camden, the responsibility for appeal arrangements rests with the school and you should contact them directly for details. For community schools, the responsibility for appeals rests with Camden Council. If you want to appeal for a community school, you can ask the Camden admissions team for a form.

### **When completed the appeal form should be returned to:**

The Education Appeals Co-ordinator  
Camden Committee Services  
Camden Town Hall  
Judd Street, London, WC1H 9JE  
Tel: **020 7974 1913**

**Please note:** Appeal forms should be submitted to committee services no later than **20 May 2016**. Appeals are heard by an independent committee. A decision by an appeal committee whether or not to offer a school place is binding on the admissions authority. If your appeal for a school is unsuccessful you may not appeal for the same school within one academic year, unless there has been a material change in circumstances.

Acceptance of a place at a school does not affect your right to appeal for a place at another school. However, if you decide to appeal, it is wise to secure a place for your child at an alternative school in case your appeal is unsuccessful. This is because reception class appeals are normally heard during the second half of the summer term. By this time, there will be very few alternative schools that would still have vacancies. Camden Council is always willing to discuss alternative schools with vacancies at any stage in the process. Please see the table on page 68 with information about appeals held during June/July 2014 for primary reception applications.



This information is only for the relevant community schools where appeals were heard. If a community school is not listed, then there were no appeals for that community school.

If you require appeal information about any Camden voluntary aided school please contact the relevant school directly.

School	Number of appeals in 2015	Successful
Beckford	1	0
Brookfield	2	0
Christopher Hatton	1	0
Eleanor Palmer	8	1
Fitzjohn's	5	0
Fleet	2	0
Gospel Oak	1	0
New End	2	n/a
Primrose Hill	4	0
Torriano	1	0

## Getting help

If you have any queries regarding these arrangements please do not hesitate to contact the Camden admissions team.

Postal address only:

School admissions team  
Children, schools and families  
Camden Council  
Town Hall  
Judd Street  
London, WC1H 9JE  
Tel: **020 7974 1625**  
Email: **admissions@camden.gov.uk**  
Website: **camden.gov.uk/admissions**

If you want to find out information about schools in other boroughs, you will need to contact the relevant school or local authority directly. See page seven of this booklet.

## Results and statistics for Camden primary schools (2014 and 2015) on offer date

On the following table on page 70 are the results and statistics from previous years for admission into Camden primary schools. The figures represent a snapshot of the position on the offer date for the years 2014 and 2015. The table shows:

1. Number of places in reception class each school can offer.
2. The number of applications received, indicating the degree to which the school was oversubscribed.
3. Number of places offered under each of the following criterion in the last two years:
  - Those with special educational needs (SEN)
  - Those with sibling(s) already attending the school
  - Those with exceptional social/medical circumstances.
4. The cut off distances beyond which applicants were initially not admitted when the results were published in May 2014 and May 2015. The distances are measured in miles.

The distance criterion is the one on which the majority of applications to community schools are judged. In this column we publish data for community schools for each of the last two years.





School name	Admission number per year	Total number of applications received		Total number of places offered to children with a statement of special educational needs		Total number of siblings offered		Total number of places offered on the basis of exceptional social/medical circumstances		Furthest child offered on the offer date in miles	
		2015	2014	2015	2014	2015	2014	2015	2014	2015	2014
Abacus	30	165	141	0	0	8	0	2	0	*	n/a
Argyle	60	96	102	0	0	26	25	0	0	n/a	2.954
Beckford	60	182	166	0	0	27	28	1	0	0.358	0.6365
Brecknock	60	147	139	0	1	31	27	0	0	n/a	0.5497
Brookfield	60	167	198	0	0	18	20	1	0	0.438	0.3608
Carlton	60	76	94	0	0	17	24	0	0	n/a	n/a
Christ Church NW1	30	79	66	1	0	14	8	0	-	0.161	0.4346
Christ Church Hampstead	27	186	172	0	0	9	-	0	-	*	n/a
Christopher Hatton	30	142	138	0	1	11	16	1	0	0.311	0.2995
Edith Neville	30	74	89	0	0	15	13	0	0	n/a	0.3028
Eleanor Palmer	30	282	285	0	1	16	11	1	1	0.112	0.1016
Emmanuel	30	250	211	1	2	3	8	0	-	0.059	n/a
Fitzjohn's	30	327	327	1	1	17	8	1	1	0.203	0.2153
Fleet	30	214	212	0	0	8	11	0	0	0.21	0.2734
Gospel Oak	60	228	250	0	0	28	25	1	0	0.37	0.349
Hampstead Parochial	30	213	205	0	3	3	0	0	-	0.363	0.197
Hawley Infants	29	142	142	0	0	4	5	0	0	0.336	0.338
Holt Trinity & St Silas	30	137	151	0	0	7	0	0	-	0.09	0.198
Holy Trinity NW3	27	129	129	0	0	10	5	0	-	*	1.2943
Kentish Town	30	158	159	3	2	14	11	0	-	0.1187	*
Kings Cross Academy	60	168	-	0	-	0	-	3	-	0.978	-
Kingsgate	120	227	201	0	0	40	33	0	0	0.198	0.285
Netley	60	88	84	1	4	29	20	0	0	n/a	n/a
New End	60	245	244	1	0	32	19	0	0	0.59	0.9795
Our Lady's	30	50	71	0	0	6	-	0	-	n/a	n/a
Primrose Hill	60	290	313	0	1	21	25	0	0	0.508	0.4071
Rhyl	60	85	94	0	1	22	18	0	0	n/a	n/a
Richard Cobden	60	129	116	0	0	30	27	0	0	n/a	0.7868
The Rosary	45	141	154	0	0	18	0	-	0	0.3843	0.41
St Alban's	30	71	50	0	0	9	8	0	-	0.432	n/a
St Aloysius Infants	60	78	95	0	0	*	0	0	-	n/a	n/a
St Dominic's	45	74	87	0	0	*	0	0	-	n/a	n/a
St Eugene De Mazenod	30	138	134	0	0	0	0	0	-	*	*
St George the Martyr	30	120	92	0	0	16	13	0	-	0.162	0.2485
St Joseph's	30	87	77	0	0	0	0	0	-	0.353	*
St Luke's	15	129	103	0	0	9	5	1	-	0.13	0.3649
St Mary & St Pancras	30	129	124	2	0	17	15	0	-	0.103	n/a
St Mary's Kilburn	30	137	126	0	0	0	0	2	-	0.118	*
St Michael's Camden Town	30	66	82	0	0	15	0	0	-	n/a	n/a
St Patrick's	30	85	83	0	0	0	0	0	-	-	-
St Paul's	30	144	132	0	0	4	12	0	-	0.22	0.2819
Torriano Infants	60	227	260	2	1	31	32	1	0	0.228	0.1857

\* - These schools only offered places based on their faith criteria and not on distance

n/a - These schools had vacant places after the offer date

# Section 5:

## Early learning and childcare

Free early learning for two, three and four year-olds in Camden is provided by the Council in partnership with schools, children's centres and private, voluntary and independent nurseries. To offer free early learning, providers must sign a protocol and be included in the directory of providers held by the Council.

### Three and four year-olds

All three and four year-olds in England are entitled to 15 hours of free early learning per week for 38 weeks per year. This entitlement starts at the beginning of the term after the child's third birthday and goes on until the beginning of the term after their fifth birthday.

**Camden Council has extended this offer and is offering local people free 25-hour nursery places for three and four-year olds in our schools and children centres.** This offer is subject to local availability and individual schools' admissions policies.

For the minimum national entitlement of 15 hours, which applies to all early years providers who are part of the scheme in the borough, the following standards apply:

- No session longer than 10 hours
- No session shorter than 2.5 hours
- No session to start before 7am or finish after 7pm.

There is some flexibility but the free offer should be at least:

- three hours per day over five days; or
- five hours per day over three days.

The free minimum early learning entitlement can consist of:

- 15 hours per week over 38 weeks a year (term-time only).
- 570 hours per year over more than 38 weeks.
- Some providers have yet to offer 38 weeks and remain on 33 weeks. They must tell parents they can't offer the full entitlement. A child can go to more than one provider, but is only entitled to a set number of hours each term.

### Eligibility

A child born in the period	Will become eligible for a place
1 April to 31 August	1 September following child's third birthday (autumn school term)
1 September to 31 December	1 January following a child's third birthday (spring school term)
1 January to 31 March	1 April following a child's third birthday (summer school term)

Children moving to England from another country can access the free entitlement on the same basis as other children regardless of whether they have British citizenship.

## Two year-olds

Camden Council is offering eligible two year-olds free early education and childcare places for up to 15 hours per week (up to 570 hours per year).

### Is my child eligible for a free place?

Your child is eligible if you live in Camden and meet at least ONE of the following criteria:

- your family meets the criteria for free school meals; or
- your family receives working tax credits and your household income is less than £16,190; or
- your child is looked-after by the local authority; or
- they have left care through special guardianship or an adoption or residence order; or
- they have a current statement of special educational needs (SEN) or an education, health and care (EHC) plan; or
- they receive the disability living allowance.

This entitlement starts at the beginning of the term after the child's second birthday and goes on until the beginning of the term after their third birthday when the child should be able to move into a free three and four year-old place.

You can apply once your child reaches the age of two. Apply online at [camden.gov.uk/twoyearolds](http://camden.gov.uk/twoyearolds), pick up an application form at your local children's centre or contact the family information service on **020 7974 1679**.

## Admissions criteria for nursery classes in Camden community schools

Places will be offered to children who have a statement of special educational needs or an education, health and care plan, which names the school with the agreement of Camden Council.

### In the event of oversubscription, places will be offered in descending order to:

- 1 Looked-after children (in public care), or previously looked-after child (see note, top of page 31).
- 2 Children with a brother or sister at the primary or infant school (including nursery class) as appropriate.
- 3 Children whom the director of children, schools and families accepts have an exceptional educational, medical or social need for a place at the school (professional evidence of any such need will be required).
- 4 Other children, with priority given to those living closest to the school measured 'as the crow flies'.  
(The address given must be the one at which the child normally lives)

If necessary, priority within group 1 or 2 will be decided on by the distance criterion 4.

**Parents should apply directly to the school for a nursery place (see opposite).**

## Admissions policy for nursery classes in children's centres

In the event of oversubscription, all applicants resident in Camden will have absolute priority over all other applicants. Places will then be offered in descending order to:

- 1 Children already attending a centre in an under threes placement.
- 2 Children who have a statement of special educational needs, which names the children's centre with the agreement of Camden Council.
- 3 Looked-after children (in public care), or previously looked-after child (see note, top of page 31).
- 4 Children with a brother or sister at the children's centre.
- 5 Children whom the director of children, schools and families accepts have an exceptional educational, medical or social need for a place at the centre (professional evidence of any such need will be required).
- 6 Other children, with priority given to the oldest children to ensure that children have experience of nursery education before entry to school.

(Please note that the terms brother and sister includes all blood or adoptive siblings or half-siblings, plus 'foster' or 'step' siblings who live in the same home as the child. A sibling relation does not apply when the older child will leave before the younger one starts.)

Information about these services can be obtained by contacting the centre or the family information service on **020 7974 1679**.

### Applying for a nursery place

Nursery admissions are dealt with directly by primary schools, children's centres and other nursery providers in Camden and parents should apply directly to their chosen school nursery, children's centre or private and voluntary sector provider. For general enquiries about childcare only, contact the family information service on **020 7974 1679** or visit **[camden.gov.uk/childcare](http://camden.gov.uk/childcare)**

See pages 74 to 76 for children's centres, voluntary and private nursery providers.



## Children's centres and nurseries

### 1A Children's Centre

1A Rosebery Avenue  
EC1R 4SR  
Tel: **020 7974 7038**

### Agar Children's Centre

Wrotham Road  
NW1 9SU  
Tel: **020 7974 4677**

### Gospel Oak Nursery

Lismore Circus  
NW5 3LE  
Tel: **020 7974 3484**

### Kilburn Grange Children's Centre

1 Palmerston Road  
NW6 2JL  
Tel: **020 7974 5089**

### Hampden Nursery

80 Polygon Road  
NW1 1HQ  
Tel: **020 7974 2841**

### Harmood Children's Centre

1 Forge Place  
NW1 8DQ  
Tel: **020 7974 5207**

### Konstam Nursery

75 Chester Road  
N19 5DH  
Tel: **020 7272 3594**

### Langtry Nursery

Kilburn Priory Locality  
11-29 Langtry Road  
NW8 0AJ  
Tel: **020 7624 0963**

### Regent's Park Children's Centre

Augustus Street  
NW1 3TJ  
Tel: **020 7974 4753**

### Thomas Coram Centre

49 Mecklenburgh Square  
WC1N 2NY  
Tel: **020 7520 0385**

## Voluntary providers

### Acol Community Nursery

16 Acol Road  
NW6 3AG  
Tel: **020 7624 2937**

### Auden Place Community Nursery

1 Auden Place  
NW1 8NA  
Tel: **020 7586 0098**

### Camden Chinese Community Centre Nursery

United Reformed Church  
Buck Street  
NW1 8NJ  
Tel: **020 7485 4156**

### Camden Square Pre-school

1 Murray Street  
NW1 9RE  
Tel: **020 7267 9586**

### Caversham Nursery

33-43 Caversham Road  
NW5 2DR  
Tel: **020 7267 6635**

### Centro Infantil Menchu

Latin American Association  
Priory House  
Kingsgate Place  
NW6 4TA  
Tel: **020 7624 9398**

### Collingham Gardens Nursery

Henrietta Mews  
Wakefield Street  
WC1N 1PH  
Tel: **020 7837 3423**

### Coram's Fields Community Nursery

93 Guilford Street  
WC1N 1DN  
Tel: **020 7833 0198**

### Fairfield Pre-school

Mary Terrace  
NW1 7LR  
Tel: **020 7183 5120 (ext. 3)**

### Holly Lodge Nursery

Oakeshott Avenue  
N6 6ED  
Tel: **020 8347 9500**

### Kingsgate

#### Community Pre-school

Kingsgate Community Centre  
107 Kingsgate Road  
NW6 2JH  
Tel: **020 7625 1743**

### LEYF Fitzrovia Nursery

54a Whitfield Street  
W1T 4ER  
Tel: **020 7580 7632**

### Lithos Pre-school

The Lithos Tenants  
Community Hall  
Lithos Road  
NW3 6EF  
Tel: **020 7794 4265**

### Maiden Lane Pre-school

156 St Paul's Crescent  
NW1 9XZ  
Tel: **020 7267 9586**

### Montpelier Nursery

115 Brecknock Road  
N19 5AH  
Tel: **020 7485 9813**

### Queen's Crescent Community Association Ltd

45 Ashdown Crescent  
London NW5 4QE  
Tel: **020 7267 6635**

### Sidings Community Centre Playgroup

Sidings Community Centre  
150 Brassey Road  
NW6 2BA  
Tel: **020 7624 0588**

### Sington Nursery

Broomsleigh Street Community Hall  
Broomsleigh Street  
NW6 1QW  
Tel: **020 7431 1279**

### Somers Town Community Nursery

Somers Town Community Centre  
150 Ossulston Street  
NW1 1EE  
Tel: **020 7388 6088**

### Sunshine Day Nursery

The Caraf Centre  
27-30 Cheriton  
Queen's Crescent  
NW5 4EZ  
Tel: **020 7284 0030 (ext. 223)**

**Swiss Cottage Pre-school**

19 Winchester Road  
NW3 3NR  
Tel: **020 7916 7090**

**Swiss Cottage Nursery**

19 Winchester Road  
NW3 3NR  
Tel: **020 7586 5272**

**Three Acres Pre-school**

29-31 Parkhill Road  
NW3 2YH  
Tel: **020 7722 3812**

**Private providers****Abacus Ark Ltd**

Units 1-4  
Plaza Parade  
Kilburn High Road  
NW6 5TR  
Tel: **020 7624 5718**

**Active Learning Nursery**

88 Compayne Gardens  
NW6 3RU  
Tel: **0800 0811620**

**Active Learning JW3**

341-359 Finchley Road  
NW3 6ET  
Tel: **020 3053 1127**

**Asquith Court Nursery  
- West Hampstead**

11 Woodchurch Road  
NW6 3PL  
Tel: **020 7328 4787**

**Bluebells Nursery**

Our Lady Help of Christians  
Church Hall  
4 Lady Margaret Road  
NW5 2XT  
Tel: **020 7284 3952**

**Bright Horizons Highgate**

Highgate Studios  
53-79 Highgate Road  
NW5 1TL  
Tel: **020 7485 5252**

**Bright Horizons Regent's Park**

15 Gloucester Gate  
NW1 4HG  
Tel: **020 7935 7274**

**Bringing Up Baby**

37 Ryland Road  
NW5 3EH  
Tel: **020 7284 3600**

**Chaston Nursery and Pre-Prep**

Chaston Place Off Grafton Terrace  
NW5 4JH  
Tel: **020 7482 0701**

**Chaston Nursery School**

30-31 Palmerston Road  
NW6 2JL  
Tel: **020 7482 0701**

**Dolphin Montessori School**

Luther Tyndale Church Hall  
Leighton Crescent  
NW5 2QY  
Tel: **020 7267 3994**

**Fordwych Nursery**

107 Fordwych Road  
NW2 3TL  
Tel: **020 8208 2591**

**Great Ormond Street Hospital**

Staff Nursery  
Italian Building  
40-41 Queen Square  
WC1N 3BB  
Tel: **020 7829 7824**

**Hampstead Activity Nursery**

Christ Church  
Hampstead Square  
NW3 1AB  
Tel: **020 7435 0054**

**Highgate Children's Centre**

53-79 Highgate Road  
NW5 1TL  
Tel: **020 7485 5252**

**Kerens Nursery**

Belsize Square synagogue  
Hampstead Square  
NW3 4HX  
Tel: **020 7435 0054**

**Kids Unlimited At Regent's Place**

Unit 1, Triton Mall  
Regent's Place  
Longford Street  
NW1 3FN  
Tel: **020 7383 7176**

**Kidz Zone Nursery**

7 Dowdney Close  
NW5 2BP  
Tel: **07712 171 122**

**Learning Tree**

Methodist Church Hall  
Quex Road  
NW6 4PR  
Tel: **020 7372 7213**

**Little Raccoons Day Nursery**

108 Swain's Lane  
N6 6PH  
Tel: **020 8340 6868**

**Lymington Montessori**

1 Dresden Close  
NW6 1XP  
Tel: **020 7431 4241**

**Mace Montessori School**

The Old Pre-School Rooms  
Rear of 38-42 Millman Street  
WC1N 3EW  
Tel: **020 7242 5842**

**Octagon Nursery School**

Saint Saviour's Church Hall  
Eton Road  
NW3 4SU  
Tel: **020 7586 3206**

**Peter Piper Nursery School**

St Luke's Church Hall  
Kidderpore Avenue  
NW3 7SU  
Tel: **020 7431 7402**

**Pinnocchio Nursery**

St Cuthbert's Parish Church  
Fordwych Road  
NW2 3TN  
Tel: **07957 966 139**

**PolkaDots Nursery**

Blackfriars Parish Hall  
Southampton Road  
NW5 4JS  
Tel: **0752 819 4109**

**Puss In Boots Nursery School**

Gospel Oak Methodist Church  
Agincourt Road  
NW3 2NT  
Tel: **020 7267 2181**

## Independent providers

### **Rainbow Montessori School: Highgate**

United Reformed Church  
Pond Square  
N6 6BA  
Tel: **020 8348 2434**

### **Rainbow Montessori School: West Hampstead**

St James Hall  
Sherriff Road  
NW6 2AP  
Tel: **020 7328 8986**

### **Rainbow Nursery**

St Benet's Church Hall,  
Lupton Street  
NW5 2HY  
Tel: **020 7485 3861**

### **Ready Steady Go – Camden**

123-127 St Pancras Way  
NW1 0SY  
Tel: **020 7586 5862**

### **Ready Steady Go – Primrose Hill**

12A King Henry's Road  
NW3 3RP  
Tel: **020 7586 5862**

### **Ready Steady Go – St John's Wood**

21 Alexandra Road  
NW8 0DP  
Tel: **020 7586 5862**

### **Rooftops Nursery**

Priestley House  
Athlone Street  
NW5 4LN  
Tel: **020 7267 7949**

### **Royal Free Staff Day Nursery**

27-29 Pond Street  
NW3 2PN  
Tel: **020 7794 9773**

### **Saint Mark's Square Nursery School**

St Mark's Church  
St Mark's Square  
Regent's Park Road  
NW1 7TN  
Tel: **020 7586 8383** (term time)  
**020 7485 9012** (holidays)

### **The North London Forest School**

All Hallows' Church –  
The Undercroft  
Savernake Road  
NW3 2JP  
Tel: **020 7284 1451**

### **The Spanish Nursery**

Ingestre Road Community Centre  
Ingestre Road  
NW5 1UX  
Tel: **020 7482 3622**

### **Turtles Nursery**

Unit 47, Dudley Court  
36 Endell Street  
WC2H 9RF  
Tel: **020 7240 8136**

### **UCL Day Nursery**

50-51 Gordon Square  
WC1H 0PQ  
Tel: **020 7679 7461**  
Baby unit located at 59 Gordon Square WC1H  
Tel: **020 7911 5353** or email  
**nursery@ucl.ac.uk**

### **Westminster Kingsway College**

Regent's Park Childcare Centre  
Longford Street  
NW1 3HB  
Tel: **020 7391 6412**

### **Woodentots Montessori Nursery**

6 Rochester Road  
NW1 9JH  
Tel: **020 7485 0053**

### **Woodentots Montessori Nature Nursery**

Thanet Youth Club  
Malden Hall  
Herbert Street  
NW5 4HD  
Tel: **020 7485 0053**

### **York Rise Nursery**

St Mary Brookfield Hall  
York Rise  
NW5 1SB

### **Broadhurst School**

19 Greencroft Gardens  
NW6 3LP  
Tel: **020 7328 4280**

### **Cavendish School**

31 Inverness Street  
NW1 7HB  
Tel: **020 7485 1958**

### **Devonshire House Preparatory School**

2-6 Arkwright Road  
NW3 6AE  
Tel: **020 7435 1916**

### **Heathside Preparatory School**

16 New End  
NW3 1JA  
Tel: **020 7794 5857**

### **Maria Montessori Children's House**

26 Lyndhurst Gardens  
NW3 5NW  
Tel: **020 7435 3646**

### **Maria Montessori Children's House (West Hampstead)**

St Mary's Community Hall  
134a Abbey Road  
NW6 4SN  
Tel: **020 7435 3646**

### **North Bridge House School Nursery and Kindergarten**

33 Fitzjohn's Avenue  
NW3 5JY  
Tel: **020 7435 9641**

### **Sarum Hall School**

15 Eton Avenue  
NW3 3EL  
Tel: **020 7794 2261**

## Section 6: Further useful information



### Special educational needs (SEN)

#### Children with a statement of special educational needs or EHC plan

The application process is different for children with statements of special educational needs (SEN), or an education, health and care (EHC) plan, although parents can make use of this booklet to gain general information about Camden primary schools. Parents of children who have a statement or EHC plan should not apply through the ordinary process, but should be guided by the SEN team of the local authority that maintains the statement. Please read pages 78 to 79 for details on Camden's special schools and other provision.

#### Children being assessed for an EHC plan

If your child is being assessed for special needs you need to apply by completing the common application (for mainstream schools only, see page 8). You do not have to wait until the assessment is completed before enrolling your child. Please seek the advice of the SEN team of the local authority that is carrying out the assessment.

#### What are the SEND reforms?

The government has made significant changes to the way children and young people with special educational needs and disabilities (SEND) and their families are supported.

As part of these reforms, Camden's Local Offer website ([localoffer.camden.gov.uk](http://localoffer.camden.gov.uk)) is now live.

The Local Offer is information, provided in one place, about all the support that is available for children and young people from birth to 25 years who have SEND.

The SEND reforms put parents, children and young people at the heart of the new system. They aim to ensure young people with special educational needs and disabilities, and their families, are more involved in the decisions that affect their lives and that the services supporting them work together more effectively. For more details visit [camden.gov.uk/sendreforms](http://camden.gov.uk/sendreforms) and [localoffer.camden.gov.uk](http://localoffer.camden.gov.uk)



## Special schools, units and resource bases for primary age children



### **Frank Barnes School for Deaf Children**

Karen Simpson, headteacher  
4 Wollstonecraft Street  
London N1C 4BT  
Phone/Minicom: **020 7391 7040**  
Mobile phone (for text/SMS): **07970 626197**  
Email: [admin@fbarnes.camden.sch.uk](mailto:admin@fbarnes.camden.sch.uk)  
Website: [fbarnes.camden.sch.uk](http://fbarnes.camden.sch.uk)

Rated 'outstanding' by Ofsted, Frank Barnes caters for deaf children aged two to 11. **The school has recently moved to a brand new school in King's Cross.** The new state-of-the-art bilingual school caters for deaf children aged two to 11, from Camden and across London. It is co-located with the new King's Cross Academy for primary children. See the school's website and page 45 of this booklet for details.

### **The Children's Hospital School at Great Ormond Street and University College Hospital**

Great Ormond Street  
London WC1N 3JH  
Phone: **020 7813 8269**  
Email: [head@gosh.camden.sch.uk](mailto:head@gosh.camden.sch.uk)  
Website: [gosh.nhs.uk/welcome-childrens-hospital-school](http://gosh.nhs.uk/welcome-childrens-hospital-school)

Caters for children and young people up to the age of 19 who are inpatients of the hospital.

### **Kentish Town Primary School resource bases for physically disabled children and pupils with autism**

Islip Street  
London NW5 2TU  
Phone: **020 7485 1279**  
Email: [admin@kentishtown.camden.sch.uk](mailto:admin@kentishtown.camden.sch.uk)  
Website: [www.kentishtown.camden.sch.uk](http://www.kentishtown.camden.sch.uk)

Caters for children aged three to 11 with a physical disability or autism who have a statement of SEN, or who are undergoing a statutory assessment.

### **Woodlands autistic spectrum disorder resource base**

Netley Primary School  
Netley Campus  
74 Stanhope Street  
London NW1 3EX  
Phone: **020 3772 0350**  
Email: [admin@netley.camden.sch.uk](mailto:admin@netley.camden.sch.uk)  
Website: [netley.camden.sch.uk](http://netley.camden.sch.uk)

Caters for children aged three to 11 years with an autistic spectrum disorder who have a statement of SEN, or who are undergoing a statutory assessment.

### **Royal Free Hospital Children's School**

Royal Free Hospital  
6 West B/6th floor  
Pond Street  
London NW3 2QG  
Phone: **020 7472 6298 / 6121**  
Email: [admin@royalfree.camden.sch.uk](mailto:admin@royalfree.camden.sch.uk)  
Website: [www.royalfree.camden.sch.uk](http://www.royalfree.camden.sch.uk)

Caters for children aged five to 16 who are in-patients or out-patients of the Royal Free Hospital, or clients of Open Minded (child and adolescent mental health service).



### **Swiss Cottage School, Development and Research Centre**

Avenue Road

London NW8 6HX

Phone: **020 7681 8080**

Email: [admin@swisscottage.camden.sch.uk](mailto:admin@swisscottage.camden.sch.uk)

Website: [swisscottage.camden.sch.uk](http://swisscottage.camden.sch.uk)

This state-of-the-art school (pictured above), which is rated 'outstanding' by Ofsted, offers 232 places for children with complex learning difficulties, including autism.

### **Torriano Primary School language resource base**

Torriano Avenue

London NW5 2SJ

Phone: **020 7424 0202 (Key Stage Two - juniors) and 020 7485 4325 (Key Stage One - infants)**

Email: [admin@torrianojun.camden.sch.uk](mailto:admin@torrianojun.camden.sch.uk)

Website: [torrianojun.camden.sch.uk](http://torrianojun.camden.sch.uk)

This caters for children with a severe specific speech or language impairment with social communication difficulties (not a diagnosed autism spectrum disorder), who have a statement of SEN, or an education, health and care plan or who are undergoing a statutory assessment.

For more information contact Camden's special educational needs team on **020 7974 6500**.

## Independent (private) schools

Camden Council does not support children at independent (private) schools except for some children with a statement of special educational needs, if the child's needs cannot be met in a Camden or other local authority school.

## Educational psychology service

Every Camden school has the support of an educational psychologist, who is a specialist on how children and young people develop and learn. They work with parents and teachers to help support children and young people who are having difficulty making progress at school. Parents can contact the school's SENDCo (special educational needs and disabilities co-ordinator) and may also discuss concerns with the school's educational psychologist at Camden Council.

Telephone **020 7974 6500**.

## Education welfare service

Education welfare officers work with schools and families to ensure that children attend school and to offer help and advice where appropriate. You can make an appointment through your child's school or directly through the service at Camden Council, Town Hall, Judd Street, London WC1H 9JE (postal address only).

Telephone **020 7974 7162**.

## Primary and secondary school records

Schools maintain a progress report on each child and these are available for parents to see. Arrangements are usually made for parents to discuss the record each year with their child's teachers. When children transfer to secondary school, the record is passed on to the new school.

## Free school meals

Once your child has a full-time school place you can apply for free school meals for them if you receive the following:

- Income Support
- Income-based Jobseeker's Allowance
- Income-based Employment and Support Allowance

- Child Tax Credit, provided you are not entitled to Working Tax Credit and have an income (as assessed by HM Revenue and Customs) that is £16,190 or less – this figure changes each April
- Working Tax Credit for four weeks after your employment finishes
- The Guarantee Credit element of State Pension Credit
- Support from the National Asylum Support Service (NASS).

If you think your child is entitled to free school meals, it is very important that you apply for them even if your child eats a packed lunch. This is because the amount of money a school receives from the government is linked to the number of children entitled to free school meals.

Please contact your child's school for more details or call **020 7974 5771**.

To apply for Free School Meals please complete the online application form at **[camden.gov.uk/fsm](http://camden.gov.uk/fsm)**

## National child measurement programme (NCMP)

Every year children in Reception and Year 6 classes across the country have their height and weight checked as part of the NCMP. This is to help the NHS understand how children are growing, which helps plan health services for them. In Camden this is usually carried out in the summer term by the Camden School Nursing Team. Parents and carers will receive their child's results by post and professional support will be offered locally if needed. If you have any concerns or want further information on the programme please speak to your school nurse or contact the public health team on **020 7527 1256** or email **[leila.reid@islington.gov.uk](mailto:leila.reid@islington.gov.uk)**

- See page 65 for details on how to contact Camden's healthy lifestyles outreach practitioner or, for more details about health improvement schemes for children and adults, visit **[healthycamden.com](http://healthycamden.com)**



## Help with home to school transport

Children under 11 can travel free on London buses. If your child has to travel more than two miles to school and the journey is unreasonable by bus, and you are on a low income, your child may be eligible for a travel card. There must also have been no places available at an appropriate school nearer to your home at the time you applied for a school place.

If you believe that there are exceptional grounds for you to be issued with a travel pass please contact:

### Postal address only

School admissions

Camden Council

Town Hall

Judd Street

London, WC1H 9JE

Telephone: **020 7974 1625**

Email: **admissions@camden.gov.uk**

Please note: there is no help available for adults taking their children to school.

## Other financial support

Parents should note that due to financial circumstances, Camden Council is unable to provide clothing grants for school pupils. If in receipt of benefits, please seek further advice from the agency providing that benefit or contact

Camden's welfare rights and benefits advice service. See **camden.gov.uk** for further details.

## Holidays in term time and extended leave

Parents should not take children out of school when it is avoidable because of the effect that absence can have on a child's educational progress. Schools expect parents to support children's learning by ensuring that they attend regularly and punctually. Holidays in term time and extended leave are subject to the school's approval and a child's place will not be held open indefinitely. If leave is granted the headteacher will tell you how long your child's place will remain available. Children who are taken on holiday or extended leave may lose their places and, therefore, may not be able to return to their previous school.

## Medication

The headteacher should be told if a child is receiving medical treatment. Medication should, when possible, be given at home. If it is necessary for a child to take prescribed medication during school hours, this should be discussed in full with the headteacher so appropriate arrangements can be made.

## Books

Camden Council provides all books required for the curriculum at primary schools.





## Deferred entry

Children are required by law to receive full-time education at the start of the school term following their fifth birthday but have the opportunity to start in the Reception year in the September following their fourth birthday. All children will normally be admitted to the Reception year at school in the September following their fourth birthday. Your child will get the most from their Reception education if they start at the same time as other children at the beginning of the school year.

If you feel there are exceptional circumstances, you may request that your child's admission be deferred until later in the Reception year.

Parents can also request their child attends part-time until they reach compulsory school age. Please contact the school for further details. You must still apply at the normal time even if you wish to defer entry.

## Requests for admission to primary school outside a child's age group

Children are educated in school with others of their age group. However, parents may request that their child is exceptionally admitted outside their age group. The admission authority\* of a school must decide whether or not the individual child's circumstances make this appropriate on educational grounds.

Such requests will only be agreed in exceptional circumstances. There is a right appeal if a place cannot be offered in another age group at the school.

All requests must include recent professional evidence of the child's circumstances which make education outside the age group necessary. Each admission authority must make its own decision, but all will expect to see evidence of an individual child's educational need, rather than general factors which relate to a wider group of children born at a similar time. They may want to discuss with parents the impact of the child being educated with children of a different age, both within primary school and at transition to secondary school when admission outside the age cohort cannot be guaranteed.

Parents seeking admission to an age group below the child's actual age should submit their request in the September of the year before the year when children of the same age are due to start school. It is recommended that parents also apply a school place in their child's actual age group before the closing date on 15 January. This enables the application to be processed and a school place secured in the child's actual age group if the request is refused by an admission authority.

If the admission authority approves the request, the parent will be advised to reapply in the following year and provide a copy of the decision. However there can be no guarantee of a place being available at the school, as this is dependent on the number of applications and pattern of admissions for that that year. It is not possible to reserve a place for the following year. Parents are therefore advised to have alternative arrangements in place.

\* The local authority is the admission authority for community and voluntary aided schools. The governing body is the admission authority for all other schools (free schools and academies). Any decision is applicable only to the school for which the admission authority is responsible.



# Did you know?

**From 1<sup>st</sup> October 2015 it will be illegal to smoke in vehicles with someone under 18 present.**

The new law helps protect children from the dangers of secondhand smoke.

For more information search Smokefree.  
For free, proven support to help you quit

- visit [smokefreelifecamden.co.uk](http://smokefreelifecamden.co.uk)
- call 0800 1070 401



## Fraudulent applications

Camden Council takes very seriously any attempt to obtain a school place by fraud. All cases are investigated and the use of credit reference agencies has improved detection rates.

**If you know someone who intends to or has used a false address to get a school place, you can report this confidentially to the Camden admissions team on 020 7974 1625 or email [admissions@camden.gov.uk](mailto:admissions@camden.gov.uk)**

You do not need to give your name but please provide as much information as possible so that we can investigate the matter fully.

If we find that a school place was obtained using a false address we will withdraw our offer, even after the child has started school, and give it to the child who was entitled to the place. We consider every school place obtained through deception denies another child their legitimate place.

We will not accept a temporary address if you still have a property that was previously used as a home address, nor will we accept a temporary address used solely or mainly to obtain a school place. You may be asked to supply additional information to explain why you are not able to use your permanent address.



Camden schools:  
**Bright** futures

**Apply online at: [camden.gov.uk/admissions](http://camden.gov.uk/admissions)**

**Admissions team  
Children, schools and families**

Postal address only:

Camden Council

Town Hall

Judd Street

London WC1H 9JE

Telephone: 020 7974 1625

Email: [admissions@camden.gov.uk](mailto:admissions@camden.gov.uk)

Published November 2015. Produced by the communications team (Creative services) 1773.8 Tel. 020 7974 1985